

PLAN OF LOTS RANDOLPH, MASS.

SCALE: 1"=40' SEPT. 30, 1960

L. W. DeCELLE SURVEYORS INC.

LAND SURVEYORS

285 UNION ST., RANDOLPH

PROPERTY OWNER:
BREWSTER CONST. CO.
RANDOLPH, MASS.

I certify that this actual survey was made
on the ground in accordance with the
Land Court Instructions of 1959 on or
between May 20 & June 4, 1960
Robert A. DeCelle *Surveyor*



RECEIVED

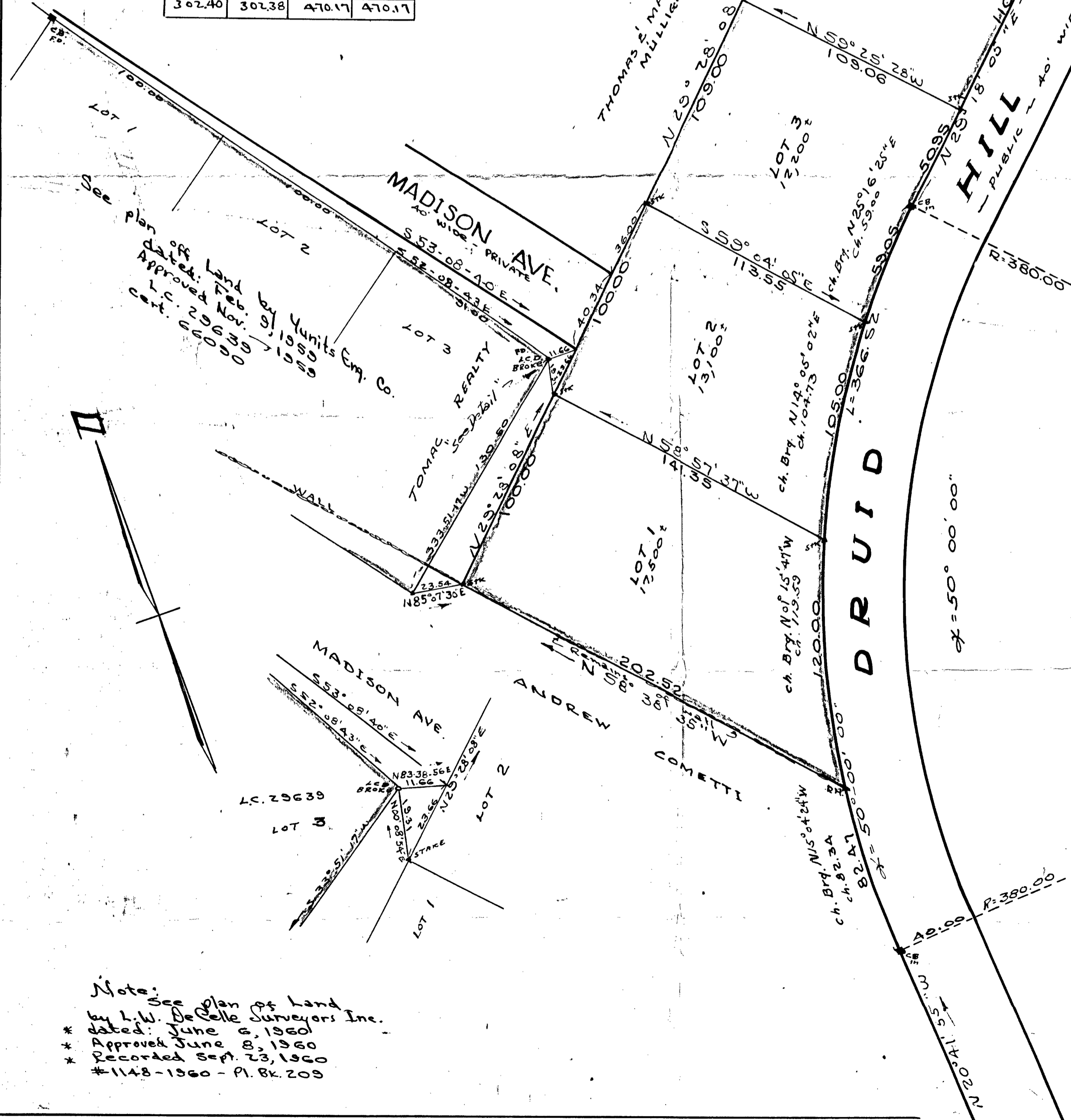
MAR 8 - 1961

PLANNING BOARD
RANDOLPH

Approval not required under
the Subdivision Control Act
Randolph Planning Board.

Memorandum
Robert A. DeCelle
Surveyor

TRAVERSE					
BEARING	LENGTH	EAST	WEST	NORTH	SOUTH
N58-38-35W	202.52		172.94	105.38	
N29-28-08E	419.00	20613		364.79	
S57-25-18E	108.75	9363			5532
S27-18-05W	160.95		78.77		140.36
S25-16-25W	57.00		25.19		5335
S14-05-02W	104.73		25.48		101.58
S01-15-41E	119.59	264			119.56
		302.40	302.38	470.17	470.17



Note:
See plan of land
by L.W. DeCelle Surveyors Inc.
dated: June 8, 1960
* Approved June 8, 1960
* Recorded Sept. 23, 1960
* #1148-1960 - Pl. Bk. 209