

SECTION A LOTS 93, 94 & 95					
DIST.	BEAR.	LAT.		DEP.	
		N.	S.	E.	W.
45.18	N.05°50'00"W	44.94	—	—	4.59
28.50	N.08°56'30"W	28.15	—	—	4.43
198.10	N.71°08'30"E	64.03	—	187.47	—
47.15	S.23°41'30"E	—	43.18	18.94	—
59.96	S.05°44'00"E	—	59.66	5.99	—
206.25	S.08°26'00"W	—	34.28	—	203.38
		137.12	137.12	212.40	212.40

SECTION B LOTS 87, 88, 89, 90, 91 & 92					
DIST.	BEAR.	LAT.		DEP.	
		N.	S.	E.	W.
208.47	S.05°44'00"E	—	207.43	20.83	—
205.39	S.83°50'00"W	—	22.06	—	204.20
196.23	N.05°50'00"W	195.22	—	—	19.94
206.18	N.80°26'00"E	34.27	—	203.31	—
		229.49	229.49	224.14	224.14

SECTION C LOTS 81, 82, 83, 84, 85 & 86					
DIST.	BEAR.	LAT.		DEP.	
		N.	S.	E.	W.
205.32	N.83°50'00"E	22.06	—	204.13	—
207.00	S.05°44'00"E	—	200.99	20.18	—
205.02	S.85°30'30"W	—	16.06	—	204.39
196.00	N.05°50'00"W	194.99	—	—	19.92
		217.05	217.05	224.31	224.31

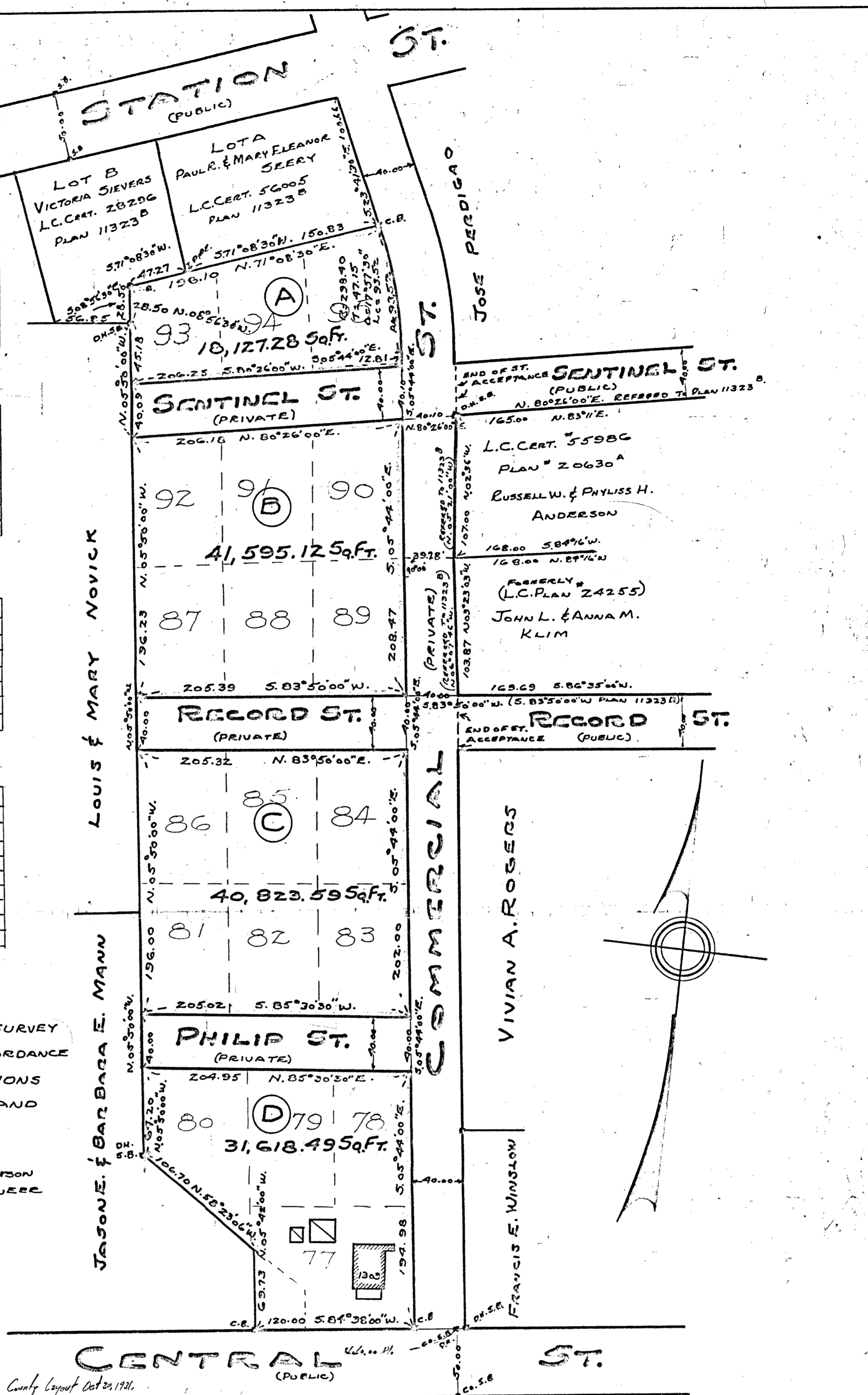
SECTION D LOTS 77, 78, 79 & 80					
DIST.	BEAR.	LAT.		DEP.	
		N.	S.	E.	W.
194.98	S.05°44'00"E	—	194.01	19.48	—
120.00	S.85°30'30"W	—	11.22	—	119.48
69.73	N.05°50'00"W	69.38	—	—	6.93
106.70	N.50°23'00"W	55.93	—	—	90.86
64.20	N.05°50'00"W	63.87	—	—	6.52
204.95	N.85°30'30"E	16.05	—	204.31	—
		205.23	205.23	223.79	223.79

I CERTIFY THAT THIS ACTUAL SURVEY WAS MADE ON THE GROUND IN ACCORDANCE WITH THE LAND COURT INSTRUCTIONS OF 1950 BETWEEN JAN 1 1958 AND APRIL 4 1958.

DATE APRIL 8 1958 Edward C. Peterson ENGINEER

NOTE:

LOT NOS FROM PLAN OF NORFOLK PARK, DATED MARCH 1899, DRAWN BY WINTHROP ALEXANDER AND RECORDED AT NORFOLK REG. OF DEEDS DORHAM MASS. IN PLAN BOOK No. 74 No. 3596.



PLANNING BOARD APPROVAL UNDER SUBDIVISION CONTROL LAW NOT REQUIRED.

DATE April 26/58. Res. affirmed Jan. 4, 1961

Almon M. Fredericks Sec. PLANNING BOARD TOWN OF STOUGHTON MASS. Almondo L. Savini (Chairman)

PLAN OF LAND IN STOUGHTON MASS. BELONGING TO RUTH M. MITCHELL SCALE 1" = 60' APRIL 8 1958.

EDWARD C. PETERSON REG. PROF. ENG. 74 LINCOLN ST. STOUGHTON MASS.

