

PLAN OF LAND IN
WEYMOUTH, NORFOLK CO., MASS.

SCALE: 1"=20' DEC. 19, 1960

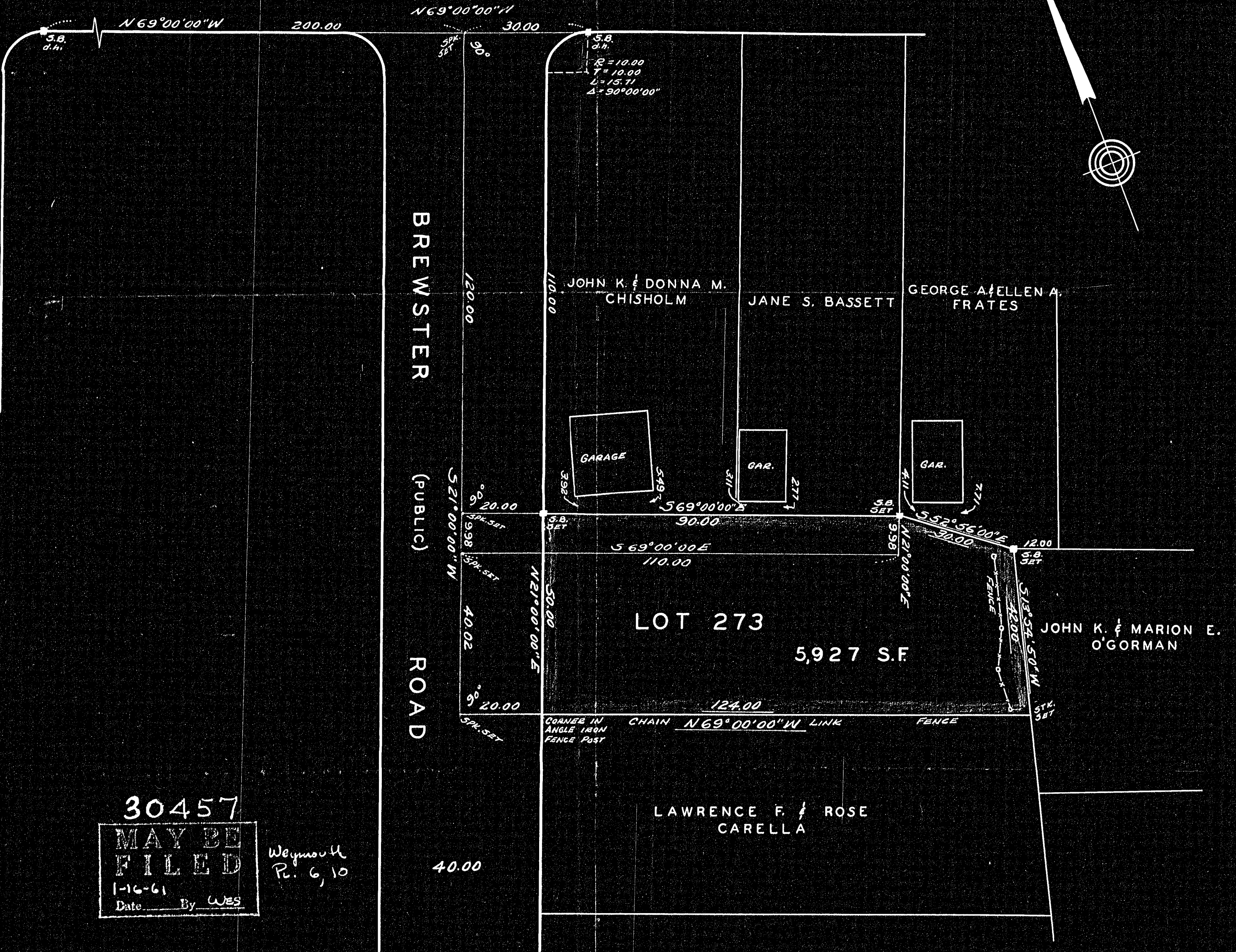
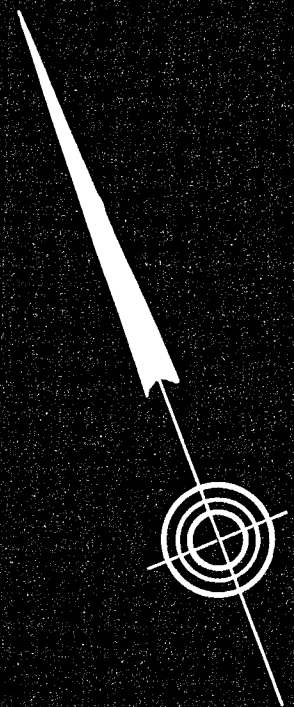
PAUL J. KNIGHT, SURVEYOR
WEYMOUTH, MASS.



EVANS (PUBLIC) STREET

GILMORE STREET

BREWSTER ROAD (PUBLIC)



30457
MAY BE FILED
1-16-61
Date By WES

Weymouth
Pl. 6, 10

I CERTIFY THAT THIS ACTUAL SURVEY WAS MADE ON THE GROUND IN ACCORDANCE WITH THE LAND COURT INSTRUCTIONS OF 1959 ON DEC. 10, 1960.

Paul J. Knight
PAUL J. KNIGHT
56 GRIFFIN TERRACE
WEYMOUTH, MASS.

Approval under the Subdivision Control Law not required

William F. White
12/27/60
FOR LAND COURT ONLY