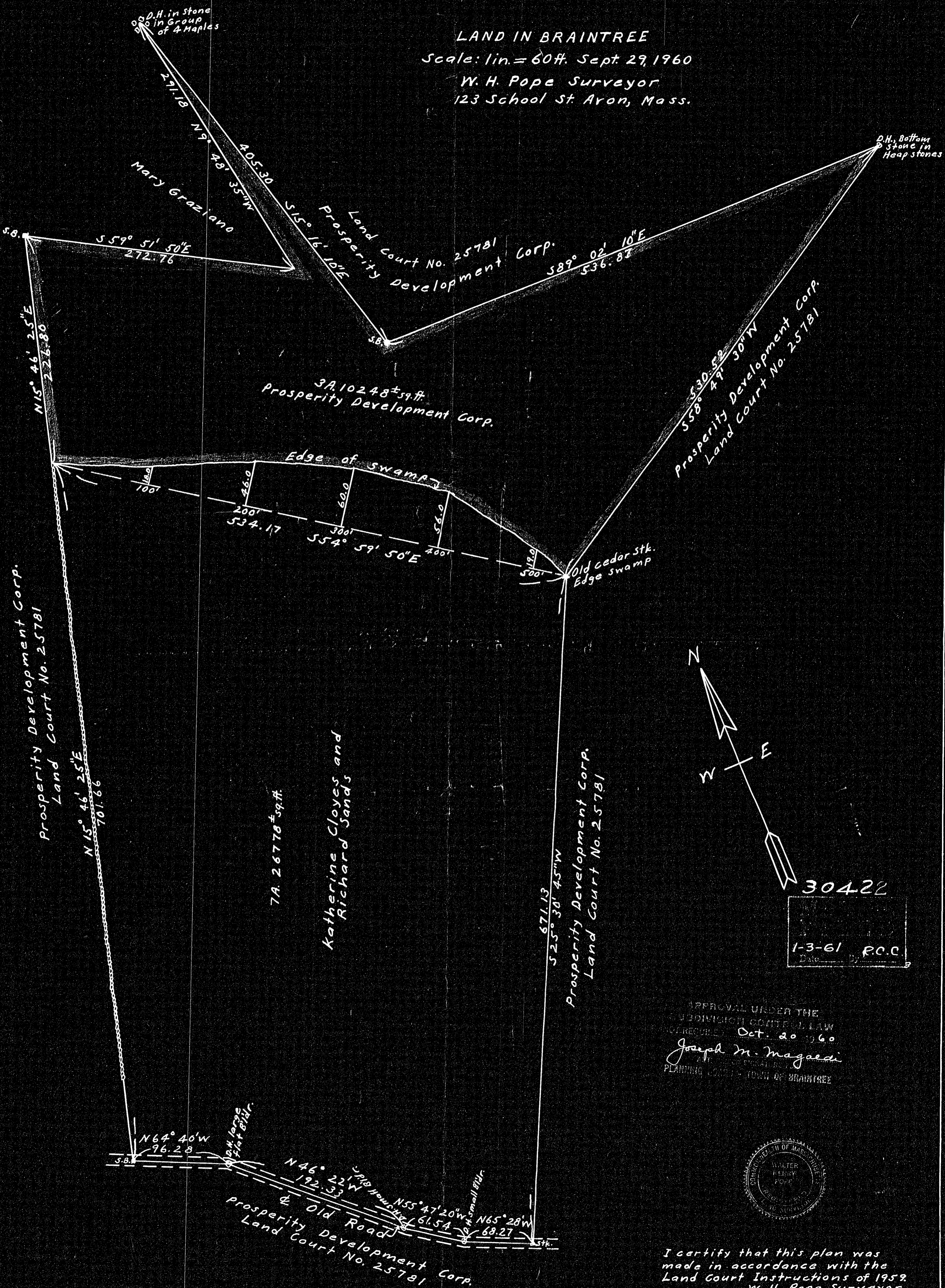


LAND IN BRAINTREE  
 Scale: 1 in. = 60 ft. Sept. 29, 1960  
 W. H. Pope Surveyor  
 123 School St. Aron, Mass.



30422  
 1-3-61 P.C.C.

APPROVAL UNDER THE  
 SUBDIVISION CONTROL LAW  
 NOT REQUIRED Oct. 20 1960  
 Joseph M. Magaedi  
 PLANNING BOARD - TOWN OF BRAINTREE



I certify that this plan was  
 made in accordance with the  
 Land Court Instructions of 1959  
 W. H. Pope Surveyor