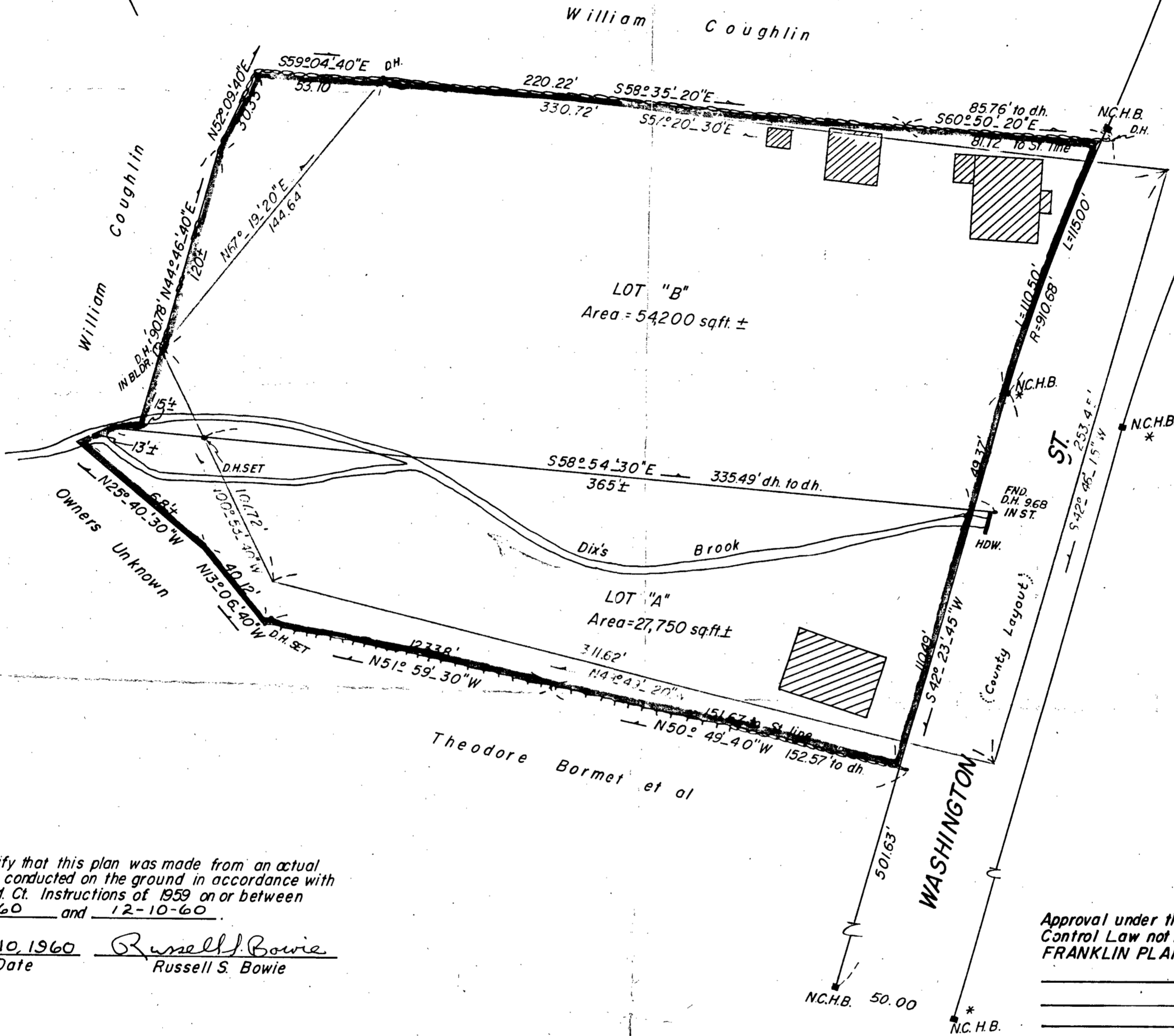
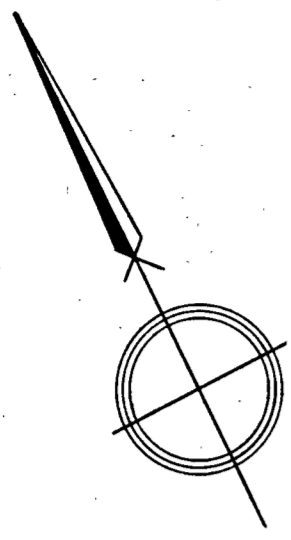


Sta	Bearing	Dist.	= E	= W	= N	= S
Transitline Balance E.C. = 0.06 P=lin 19,136						
542°46'15"W		253.45		172.11		186.05
N49°49'25"W		311.62		238.10	201.04	
N00°53'37"W		107.72		1.68	107.71	
N67°19'16"E		144.64	133.46		55.77	
S57°20'30"E		330.72	278.43			178.47
Total		1148.18	411.89	411.89	364.52	364.52



I certify that this plan was made from an actual survey conducted on the ground in accordance with the Ld. Ct. Instructions of 1959 on or between 4-13-60 and 12-10-60.

Dec. 10, 1960 *Russell S. Bowie*
Date Russell S. Bowie

Approval under the Subdivision Control Law not required.
FRANKLIN PLANNING BOARD

Date: _____

Note: See plan by Bowie Engineering Co. dated April 25, 1960 endorsed as above.

* Denotes Bounds to be adjusted by Norfolk County

PETITIONERS PLAN OF LAND
IN
FRANKLIN, MASS.

SCALE: 1" = 40'

DEC. 10, 1960

BOWIE ENGINEERING CO.
CIVIL ENGINEERS & LAND SURVEYORS
MILLIS, MASS.

