

Charles A. and Janet F. Laverty.
 Edward C. Donnelly Jr., John Donnelly and Mary A. Stuart, Trustees for John Donnelly and Sons.

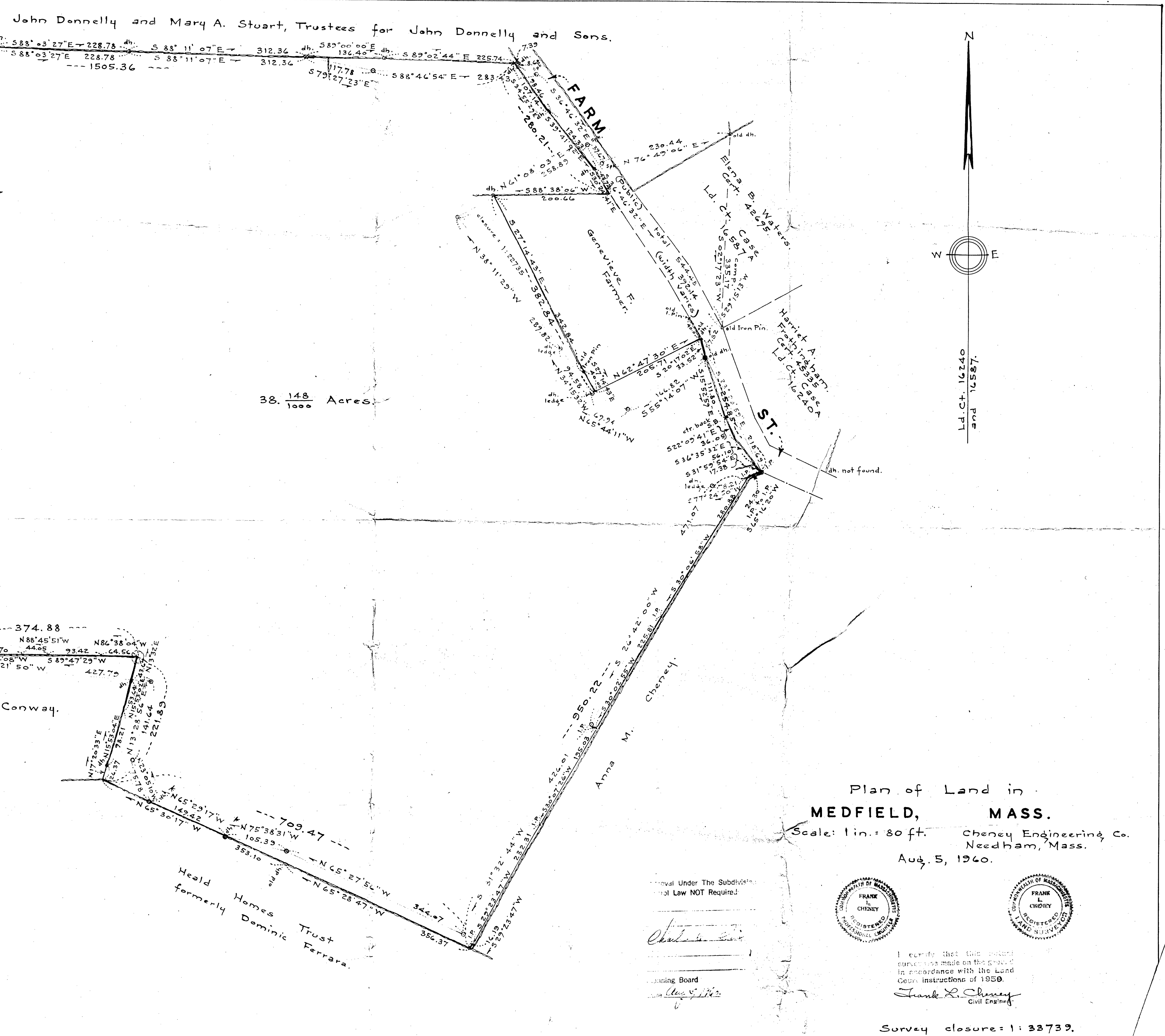
Harvey M. and Florence D. Tompkins.
 William J. and Dorothea E. Moran.

James C. and Belle Burgess.

Harry E. Conway.

Heald Homes Trust formerly Dominic Ferrara.

Anna M. Cheney.

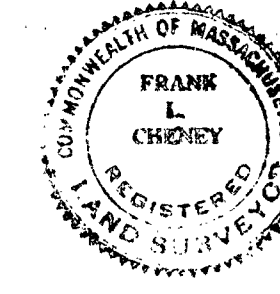
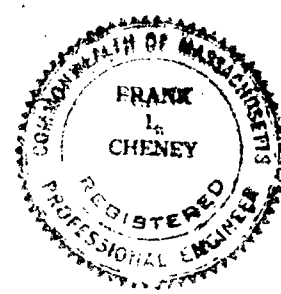


Plan of Land in
MEDFIELD, MASS.
 Scale: 1 in. = 80 ft. Cheney Engineering Co.
 Needham, Mass.
 Aug. 5, 1960.

Approval Under The Subdivision Control Law NOT Required.

Charles L. Cheney

Planning Board
Aug 5, 1960



I certify that the actual survey was made on the ground in accordance with the Land Commission Instructions of 1950.
Frank L. Cheney
 Civil Engineer

Survey closure = 1:33739.