

COMMERCIAL (Public - 60.00 feet wide) STREET

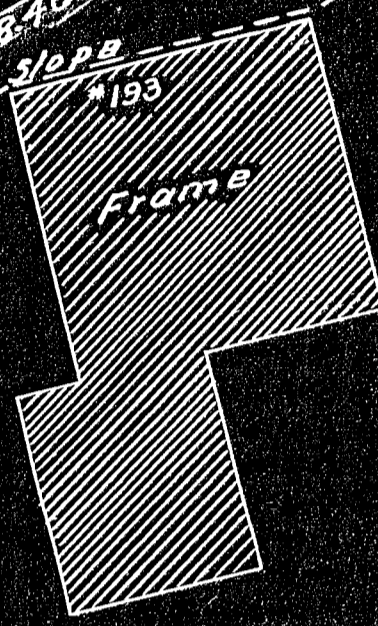
County Widening Aug. 30, 1955

19+55.64 Spike at E used

15+ Spike & 17.50

136.73

Helen M. Markham
James P. Markham



William T. Donahoe
R. Maud Donahoe

Lot 1
16,734 ± S.F.

Old Colony R.R. South Shore By N.Y.N.H. & Hartford

30366
MAY 1960
12-6-60
Dis. by UES

Weymouth
Pl. 16

12/5/60
Weymouth Planning Board
Approval under the subdivision
Control Law not required
[Signature]

Plan of Land in Weymouth, Mass.
Scale 20 feet to an inch
November 25, 1960
Ernest W. Branch Inc. Civil Eng's
11 Adams Building, Quincy

I certify that this actual survey was made on the ground in accordance with the Land Court instructions of 1959 between Oct. 20 and Nov. 23, 1960

Robert S. Booth Jr. Engineer
11 Adams Building, Quincy

Sta. 100+40.15
Sta. 100+76.98
[Signature]

