

PLAN OF LAND IN BELLINGHAM MASS.

OWNED BY EAST COAST BUILDERS INC.
SCALE 1"=40' SEPTEMBER 28, 1960
BRADFORD SAIVETZ & ASSOCIATES INC.
CONSULTING CIVIL ENGINEERS
QUINCY, MASS.



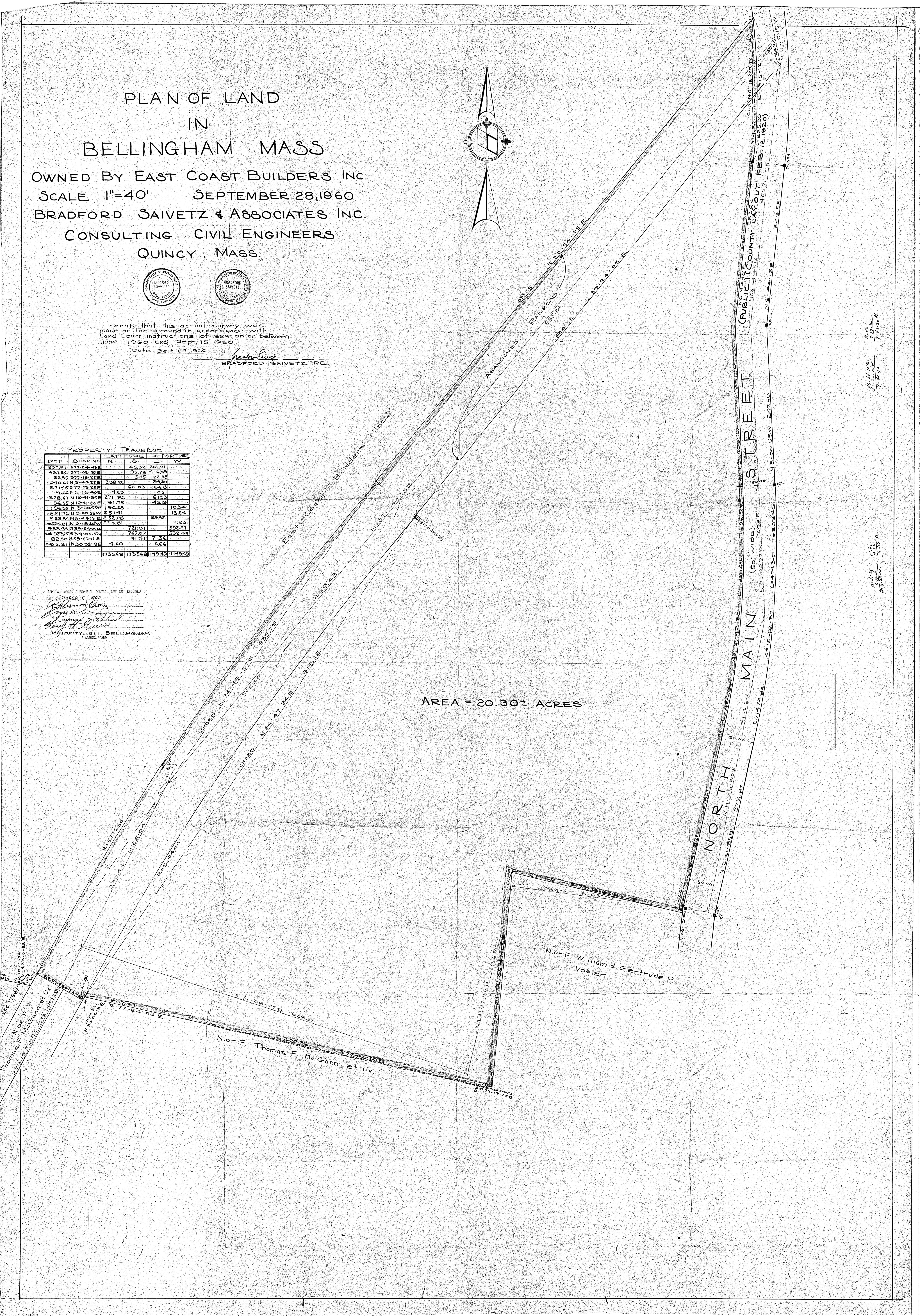
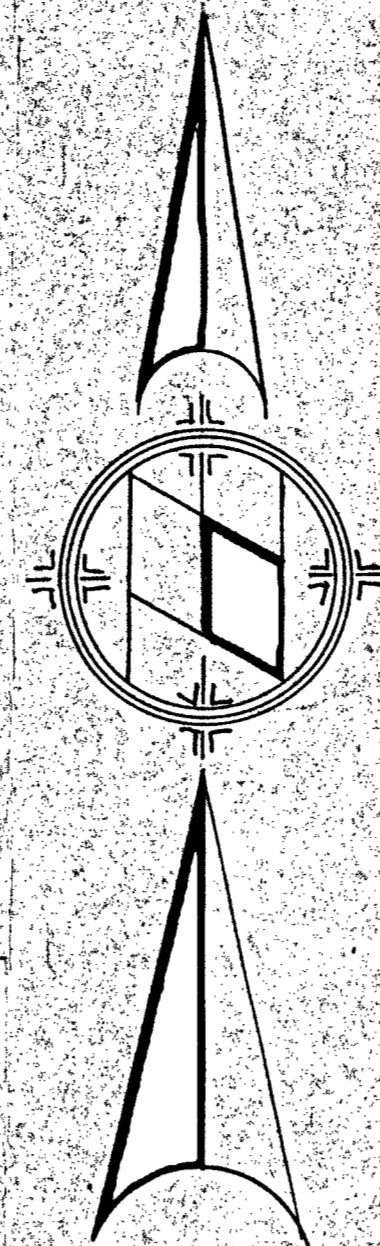
I certify that this actual survey was made on the ground in accordance with Land Court instructions of 1959 on or between June 1, 1960 and Sept. 15, 1960
Date Sept 28, 1960

Bradford Saivetz
BRADFORD SAIVETZ P.E.

PROPERTY TRAVERSE					
DIST.	BEARING	LATITUDE	DEPARTURE		
	N	S	E	W	Y
207.91	S77-24-43E	45.32	202.91		
427.84	S77-02-20E	95.79	416.49		
22.85	S77-18-51E	5.05	22.23		
300.00	N5-47-25E	298.24	9.76		
27.15	S77-13-25E	60.03	26.47		
4.66	N6-16-40E	4.63	0.51		
278.47	N10-41-55E	271.94	41.53		
136.55	N12-41-35E	131.75	43.80		
196.55	N3-00-55W	196.28	10.27		
251.70	N3-00-55W	251.41	13.29		
253.84	N6-47-15E	232.08	117.20		
224.81	N1-19-36W	224.81	29.82		
933.08	S39-24-08W	721.01	592.27		
933.75	S34-48-37W	767.07	532.44		
22.30	S53-32-11E	41.51	7.13		
460.31	N20-06-19E	460.00	26.66		
1735.68		1735.68	1149.49		

APPROVAL UNDER SUBDIVISION CONTROL LAW NOT REQUIRED
DATE OCTOBER 1, 1960
Robert Dixon
Mayor of Bellingham
Majority of the Bellingham Planning Board

AREA = 20.30± ACRES



NORTH MAIN STREET (50' WIDE)

PUBLIC COUNTY LAYOUT FEB. 12, 1920

ABANDONED RAILROAD

EAST COAST BUILDERS INC.

Nor F. William & Gertrude P. Vogler

Nor F. Thomas F. McGann et Ux.