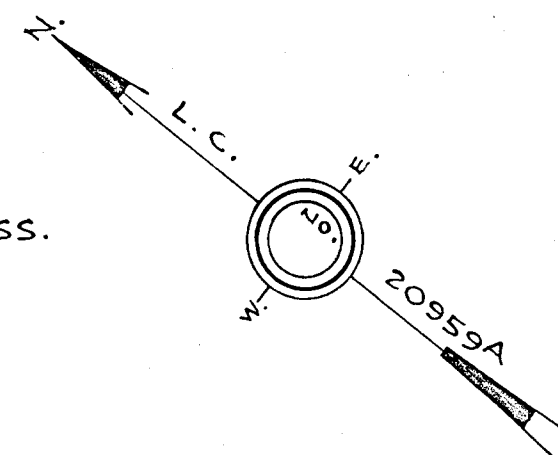


PLAN OF LAND IN MILTON, MASS.

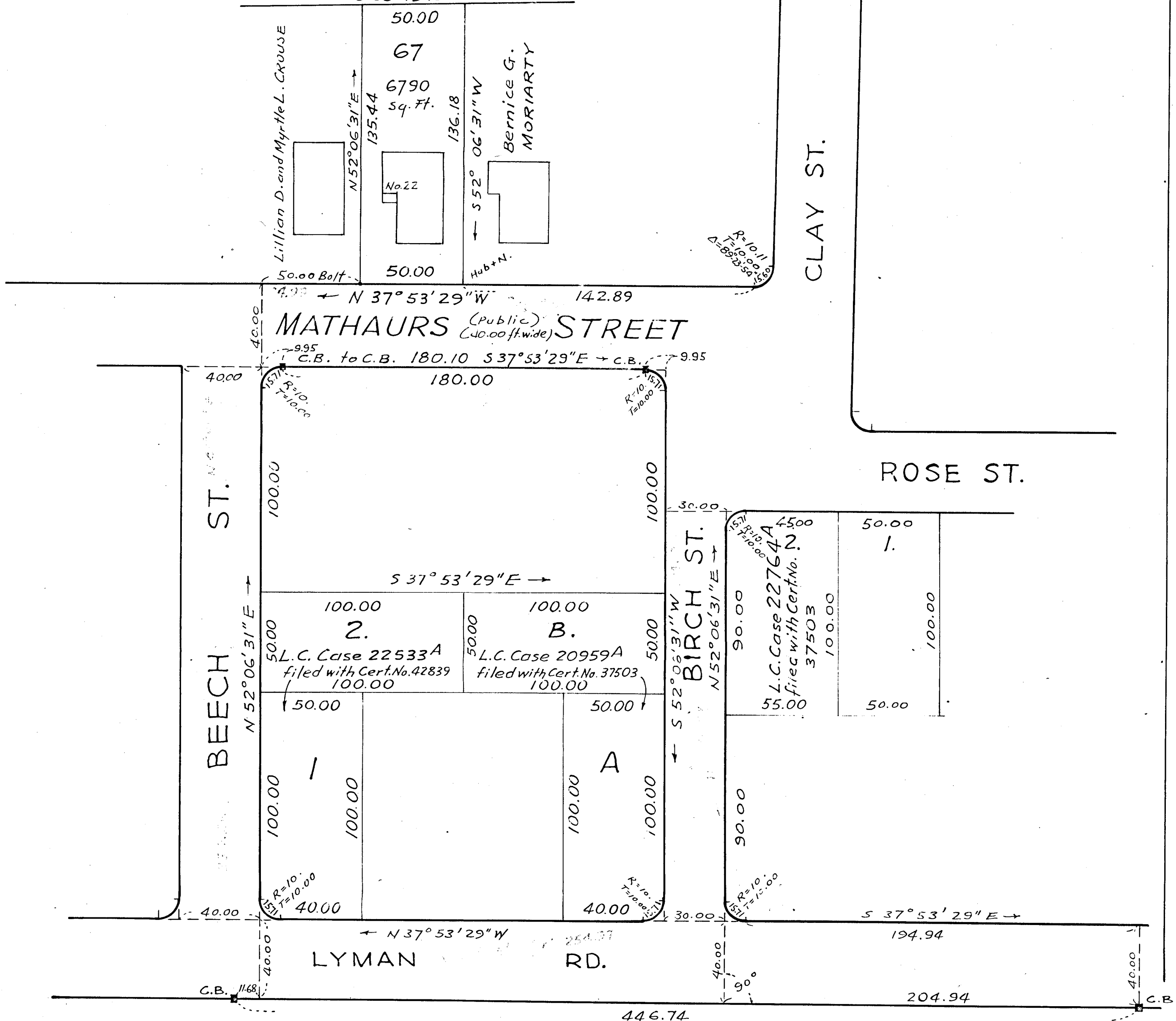
Scale 40 feet to an inch. August 5, 1960.

Clifton D. Holman, Jr. - Reg. Land Surveyor
59 Grafton Ave. - Westwood, Mass.



Anthony F. and Theresa M. GRASSO

WOODVILLE (Private) AVE.
30. ft. wide
S 38°43'15" E →



Approval under the Subdivision Control Law is not required.

Town of MILTON PLANNING BOARD

Date: _____

L.C. Case 18935
filed with Cert. No. 34572

I certify that this actual survey was made on the ground in accordance with the Land Court Instructions of 1959 on July 26, 1960.

August 5, 1960 Clifton D. Holman, Jr.

