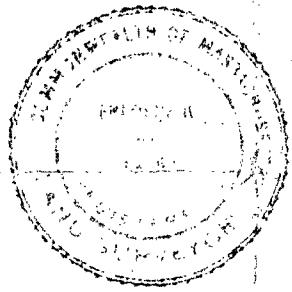
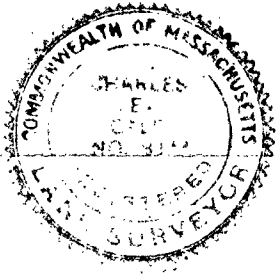


PLAN OF LAND IN WEYMOUTH, NORFOLK CO., MASS.

SCALE 1"=20'

JULY 8, 1960.

THE SCHUYLER CLAPP CO.
BRAINTREE, MASS.



JN 12854

WHITMANS POND
"GREAT POND"

ALPINE ROAD
PRIVATE ROAD
VARIABLE WIDTH

OLIVE A. CLANCY, TRUSTEE

LOT B
5,563 \$

WILLIAM E. & LOIS J. DIERSCH

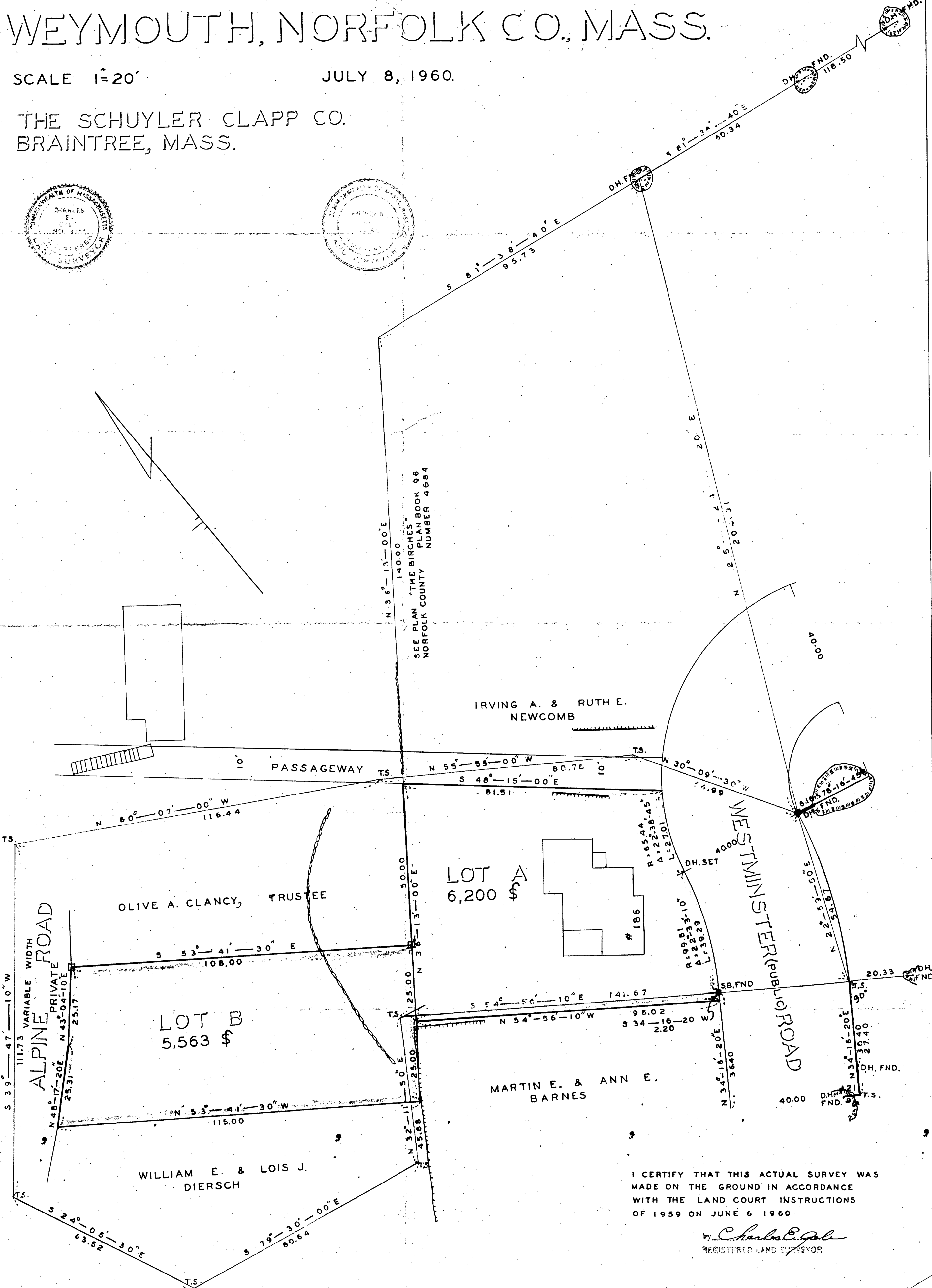
LOT A
6,200 \$

MARTIN E. & ANN E. BARNES

IRVING A. & RUTH E. NEWCOMB

PASSAGEWAY

WESTMINSTER PUBLIC ROAD



I CERTIFY THAT THIS ACTUAL SURVEY WAS
MADE ON THE GROUND IN ACCORDANCE
WITH THE LAND COURT INSTRUCTIONS
OF 1959 ON JUNE 6 1960

By *Charles E. Clapp*
REGISTERED LAND SURVEYOR

□ - DENOTES CONC. BOUND TO BE SET

JN