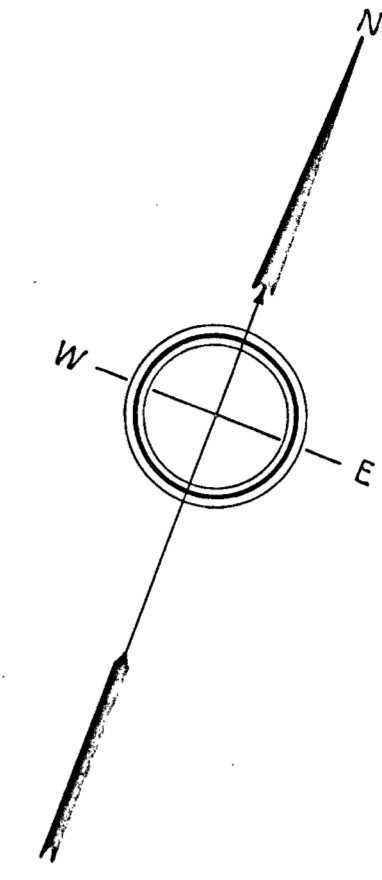


BEACON STREET



CARLTON STREET  
(PUBLIC 40.00 WIDE)

MONMOUTH STREET

MONMOUTH STREET

MEDFIELD ST.

BROOKLINE BOSTON STREET

MAITLAND ST.

PARK DRIVE

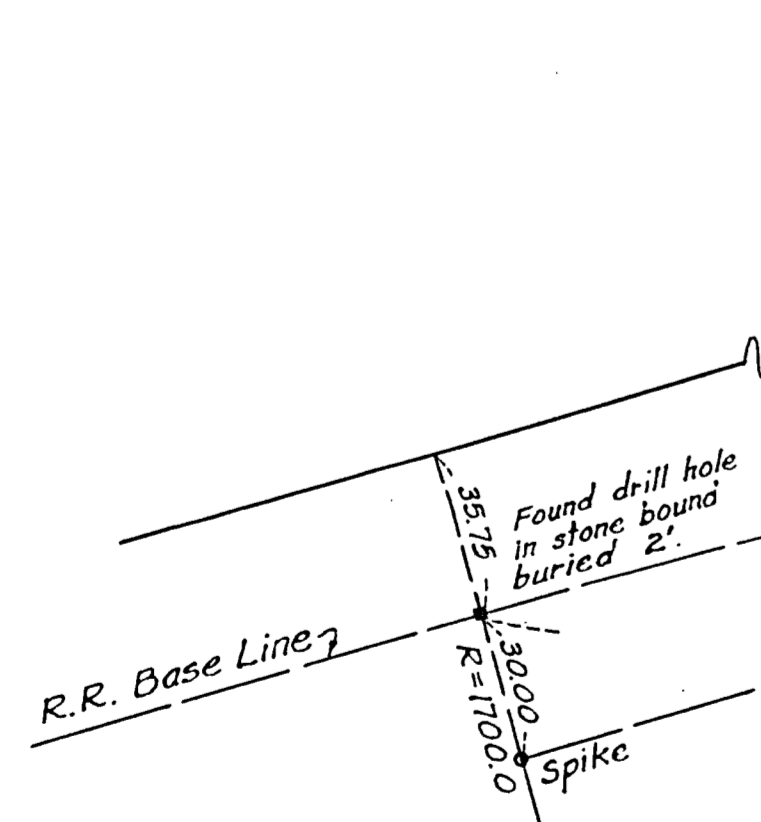
MONMOUTH COURT  
(PUBLIC 75.00 WIDE)

FIELD TRAVERSE

STA.	INTERIOR ANGLE	DEFLECTION ANGLE	BEARING	DISTANCE	LATITUDE		DEPARTURE	
					N	S	E	W
A	106-30-34	73-29-26	S20-38-50E	302.09		282.686	106.521	
B	73-27-22	106-32-38	S52-50-36W	339.56		205.093		270.625
C	90-00-00	90-00-00	N20-36-46W	398.78	373.251			140.391
D	90-02-04	89-57-56	N69-23-14E	325.32	114.529		304.493	
	360-00-00				487.780	487.779	411.014	411.016

PROPERTY LINE TRAVERSE

INTERIOR ANGLE	DEFLECTION ANGLE	BEARING	DISTANCE	LATITUDE		DEPARTURE	
				N	S	E	W
106-30-34	73-29-26	S20-38-50E	266.26		249.158	93.888	
73-27-40	106-32-20	S52-50-36W	190.22		114.892		151.602
90-02-39	89-57-21	N20-37-04W	78.58	73.547			27.670
270-00-00	90-00-00	N69-20-17E	17.41	6.144			16.290
89-57-03	90-02-57	N20-39-43W	111.83	104.637			39.460
270-01-45	90-01-45	N69-23-14E	25.00	8.801			23.400
89-58-15	90-01-45	N20-38-31W	130.00	121.655			45.828
90-02-04	89-57-56	N69-23-14E	139.94	49.266		130.982	
1080-00-00				364.050	364.050	264.560	264.560



formerly Boston & Albany  
now Metropolitan Transit  
Railroad Authority

Approval under The Subdivision Control  
Law not required.  
Signed: *Arthur G. Appender*  
Secretary  
Brookline Planning Board

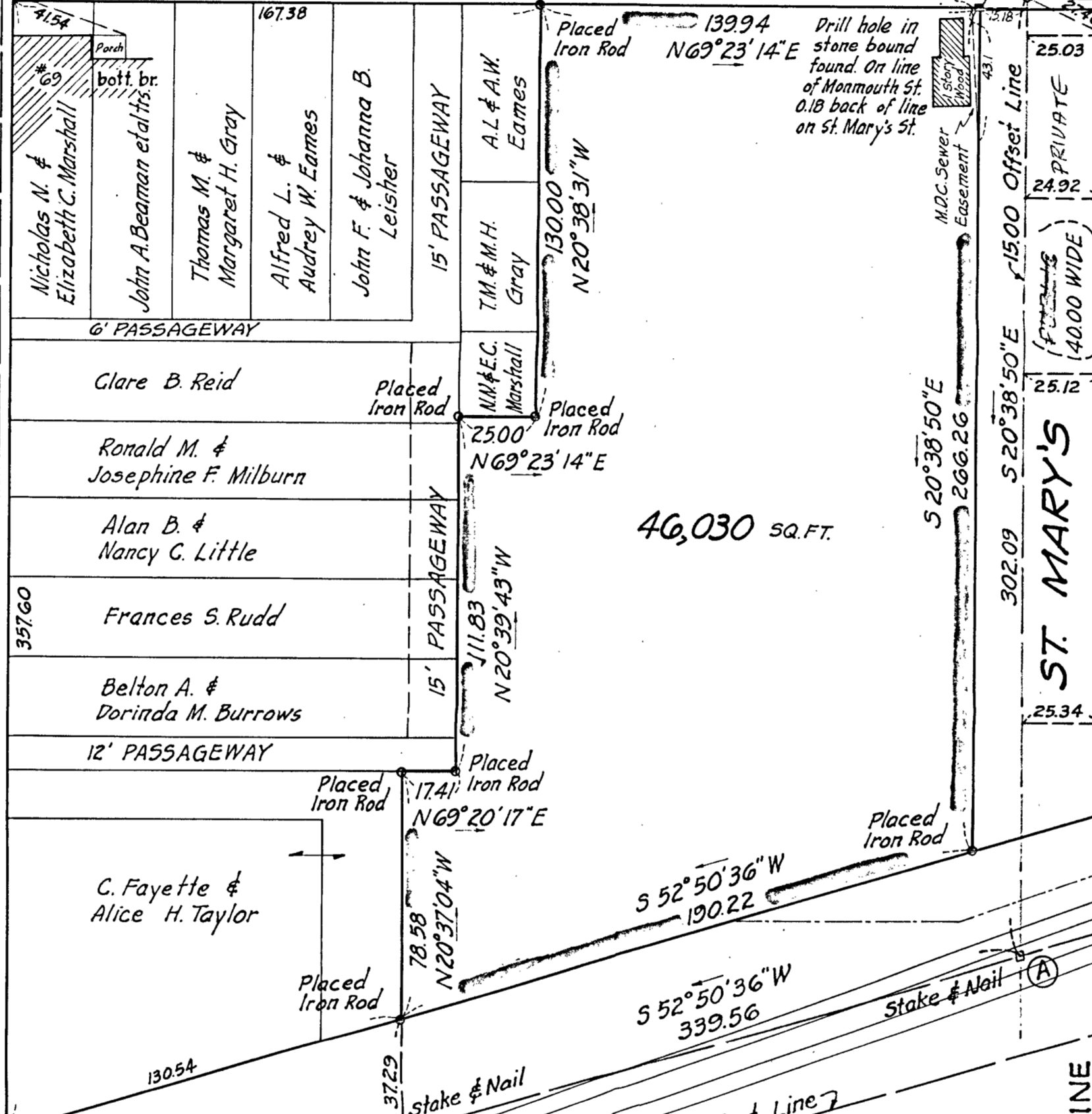
# PLAN OF LAND IN BROOKLINE, MASS.

Scale: 1 in = 40 ft  
Date: Aug. 12, 1960

Henry F. Bryant & Son Inc.  
Engineers - Brookline, Mass.

I certify that this actual survey was made on the ground  
in accordance with the Land Court Instructions of 1959  
between July 25, 1960 and August 3, 1960.

Signed: *Douglas W. Killam*  
Registered Land Surveyor  
46 White Place  
Brookline, Mass.



46,030 SQ. FT.

Stone Bound to Stone Bound = 2445.62  
(record dist, not meas.)