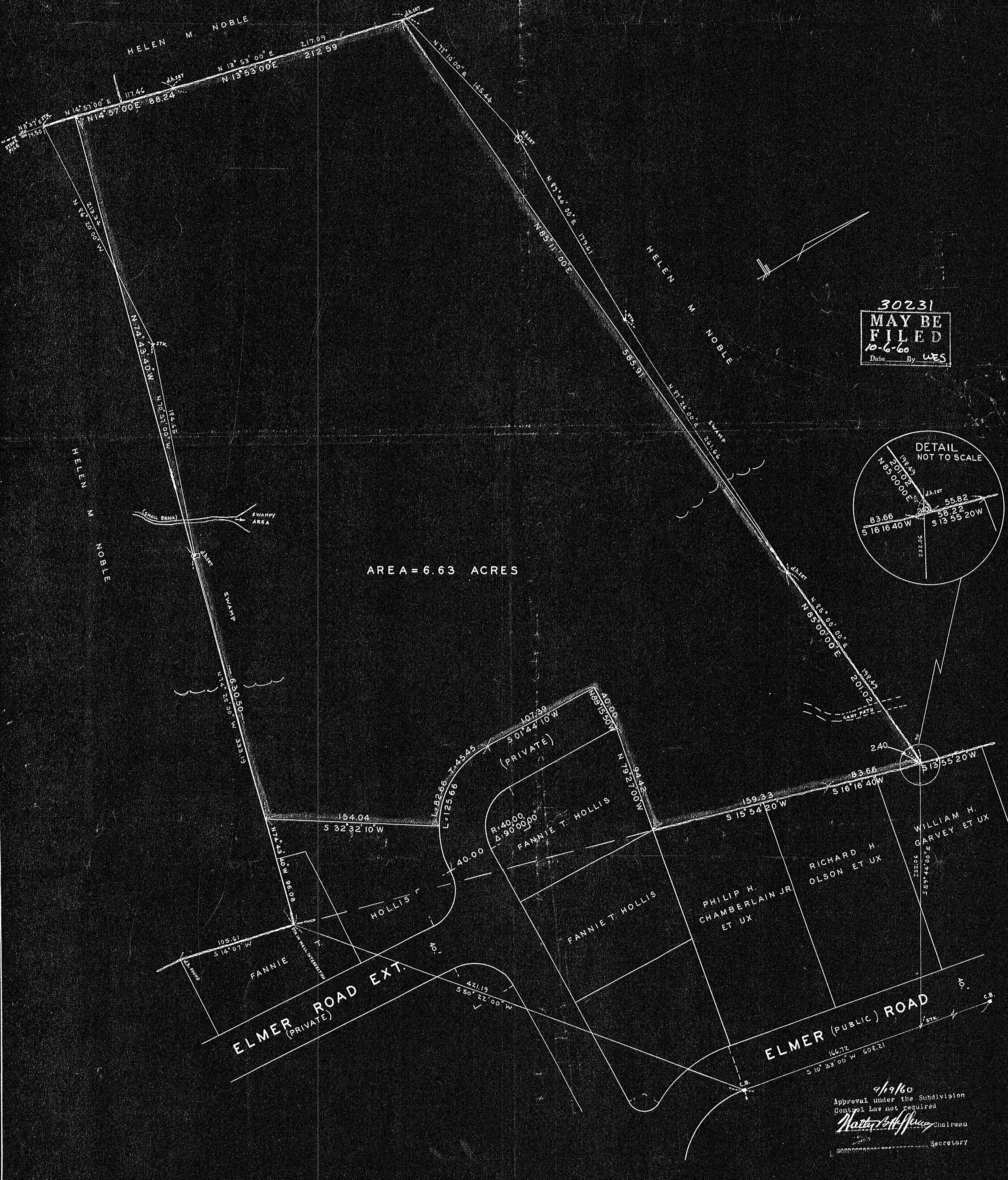


PLAN OF LAND IN
WEYMOUTH, NORFOLK CO. MASS.

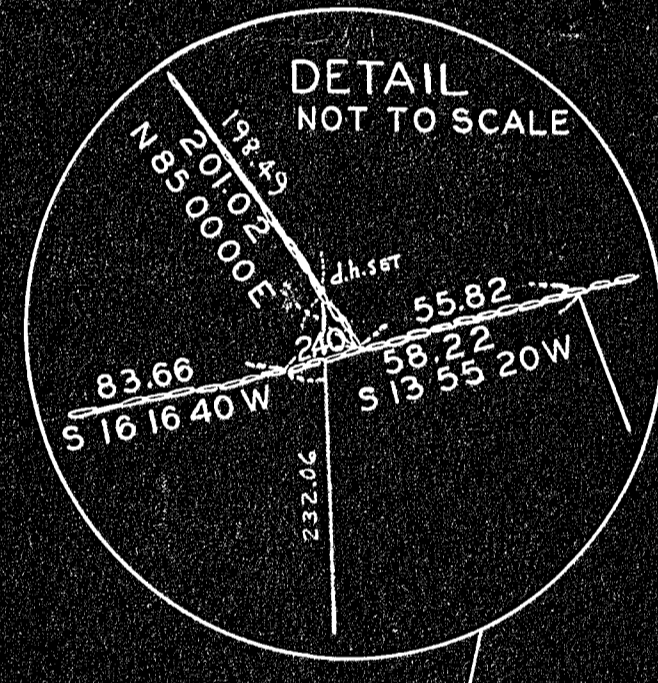
SCALE: 1"=40' SEPTEMBER 12, 1960.

I CERTIFY THAT THIS ACTUAL SURVEY WAS
MADE ON THE GROUND IN ACCORDANCE WITH
THE LAND COURT INSTRUCTIONS OF 1959, ON
JULY 9, 1960. CLASS "A"

Paul J. Knight
PAUL J. KNIGHT, SURV.
58 GRIFFIN TERRACE
WEYMOUTH, MASS.



30231
MAY BE
FILED
10-6-60
Date By WES



9/9/60
Approval under the Subdivision
Control Law not required
Walter J. Spence Chairman
Secretary