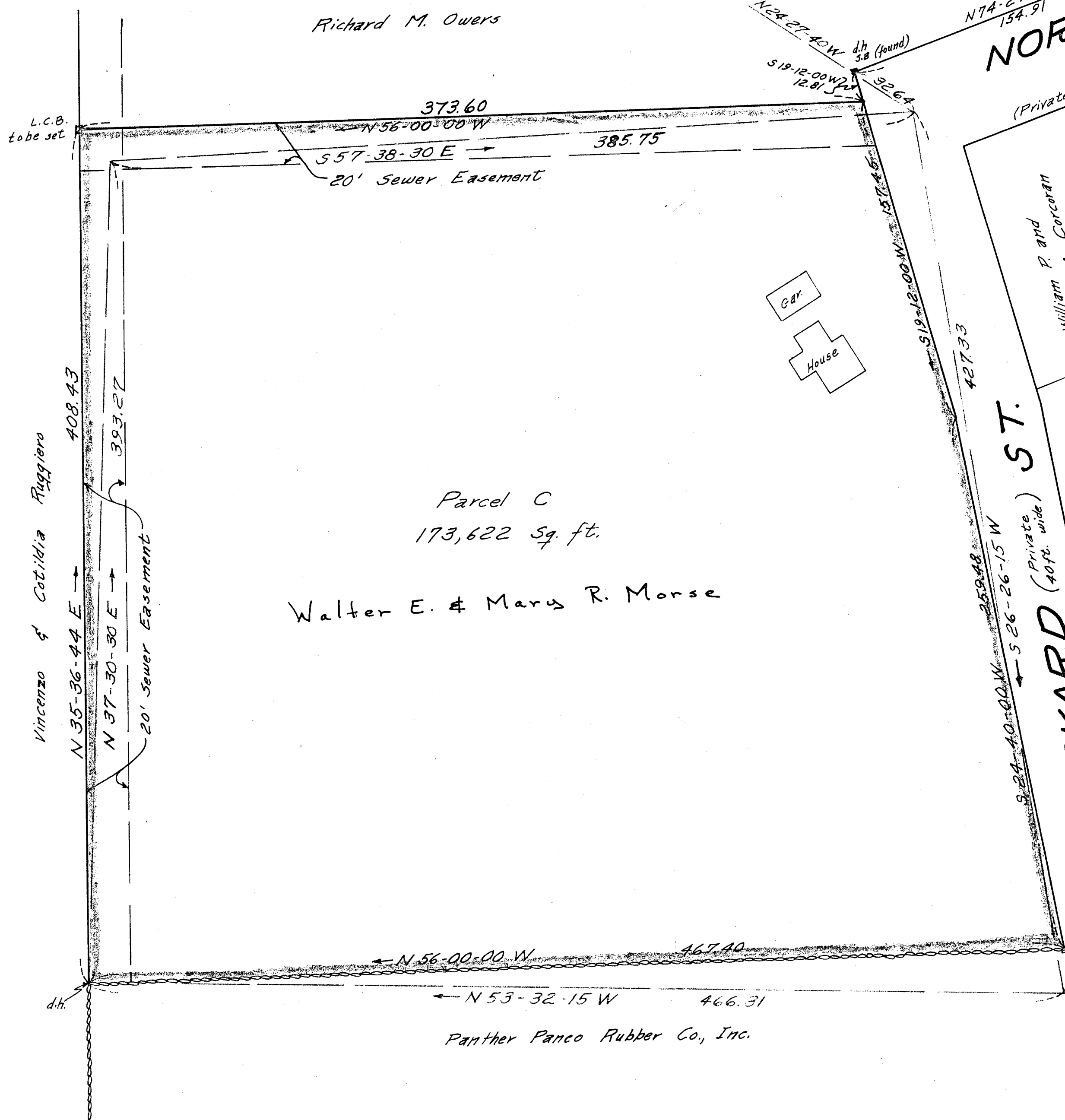


WELCH AVE.  
(Private - 40 ft. wide)

NORTH PAUL STREET  
(Private - 50 ft. wide) 20' S (Public - 50 ft. wide)

PACKARD ST.  
(Private - 40 ft. wide)



Richard M. Owers

Parcel C  
173,622 Sq. ft.

Walter E. & Mary R. Morse

APPROVAL UNDER SUBDIVISION

CONTROL LAW NOT REQUIRED.  
*Alonzo S. Brown* (Chairman)  
Dated June 30, 1960

Planning Board  
Town of Stoughton

# PLAN OF LAND IN STOUGHTON, MASS.

Scale: 1 inch = 40 feet Date: June 23, 1960

NORWOOD ENGINEERING COMPANY, INC.  
CIVIL ENGINEERS  
NORWOOD, MASS.

I certify that this actual survey was made on the ground in accordance with the Land Court Instructions of 1959 on or between Nov. 3, 1959 and Mar. 2, 1960.  
*Eugene Smith*

