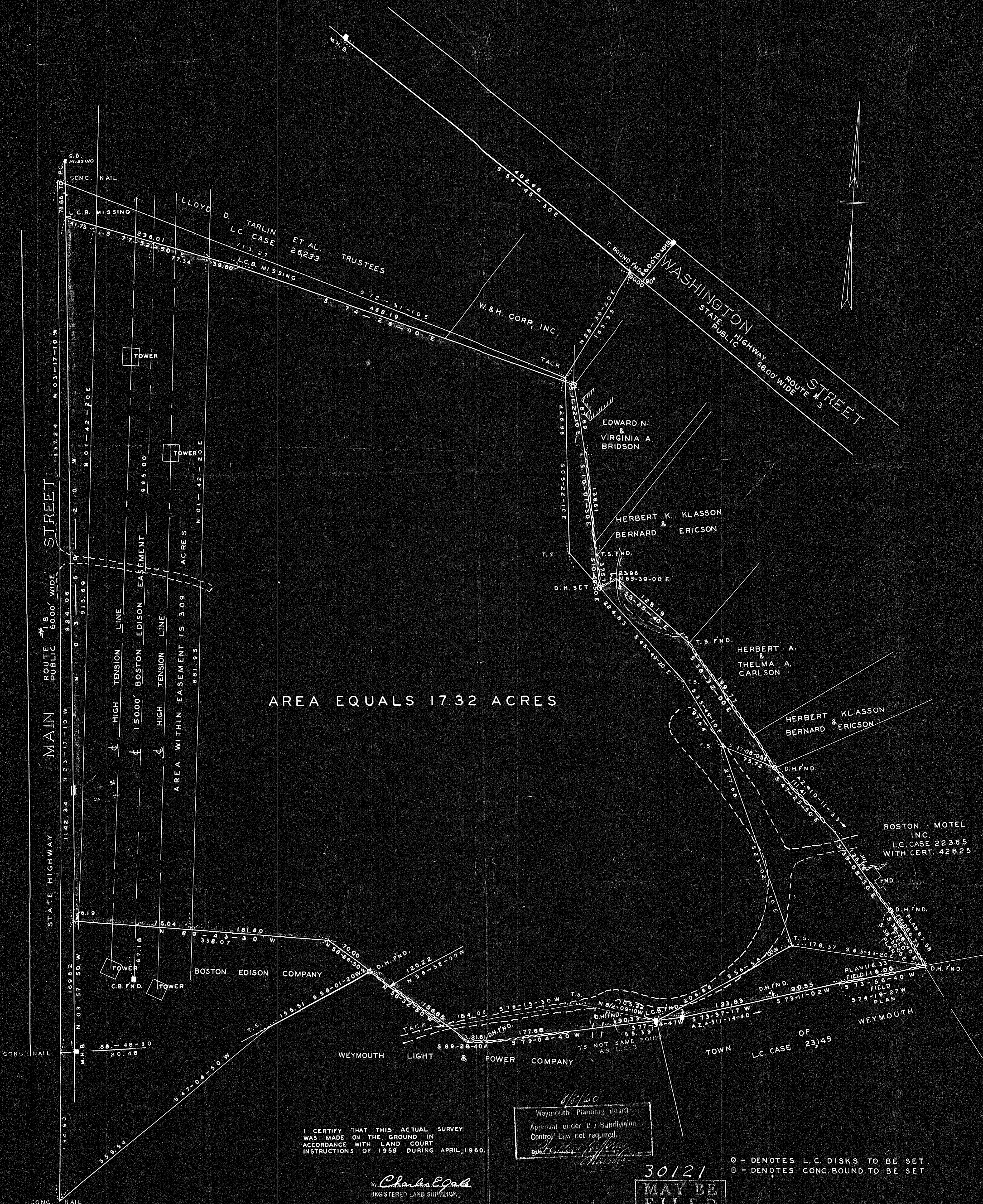
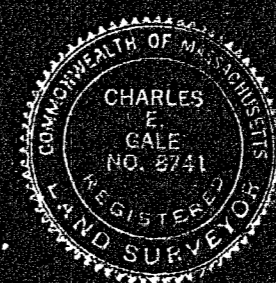
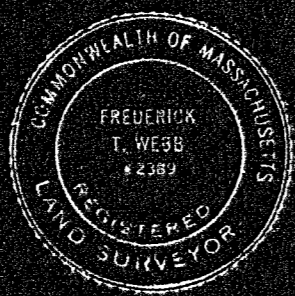


PLAN OF LAND IN WEYMOUTH, NORFOLK COUNTY, MASS.

SCALE: 1"=60'

JULY 14, 1960

THE SCHUYLER CLAPP COMPANY
BRAintree, MASS.



AREA EQUALS 17.32 ACRES

I CERTIFY THAT THIS ACTUAL SURVEY WAS MADE ON THE GROUND IN ACCORDANCE WITH LAND COURT INSTRUCTIONS OF 1959 DURING APRIL, 1960.

Charles E. Gale
REGISTERED LAND SURVEYOR

Waymouth Planning Board
Approval under U.S. Subdivision Control Law not required.
Date: 8/10/60
By: [Signature]

30121
MAY BE FILED
8/10/60 B.R.C.C.
Waymouth Pk. 29

○ - DENOTES L.C. DISKS TO BE SET.
□ - DENOTES CONC. BOUND TO BE SET.