

ABERDEEN (Public - 30.00 Wide) ROAD

STREET
Width Varies)

Land Court Case Number 1963-29

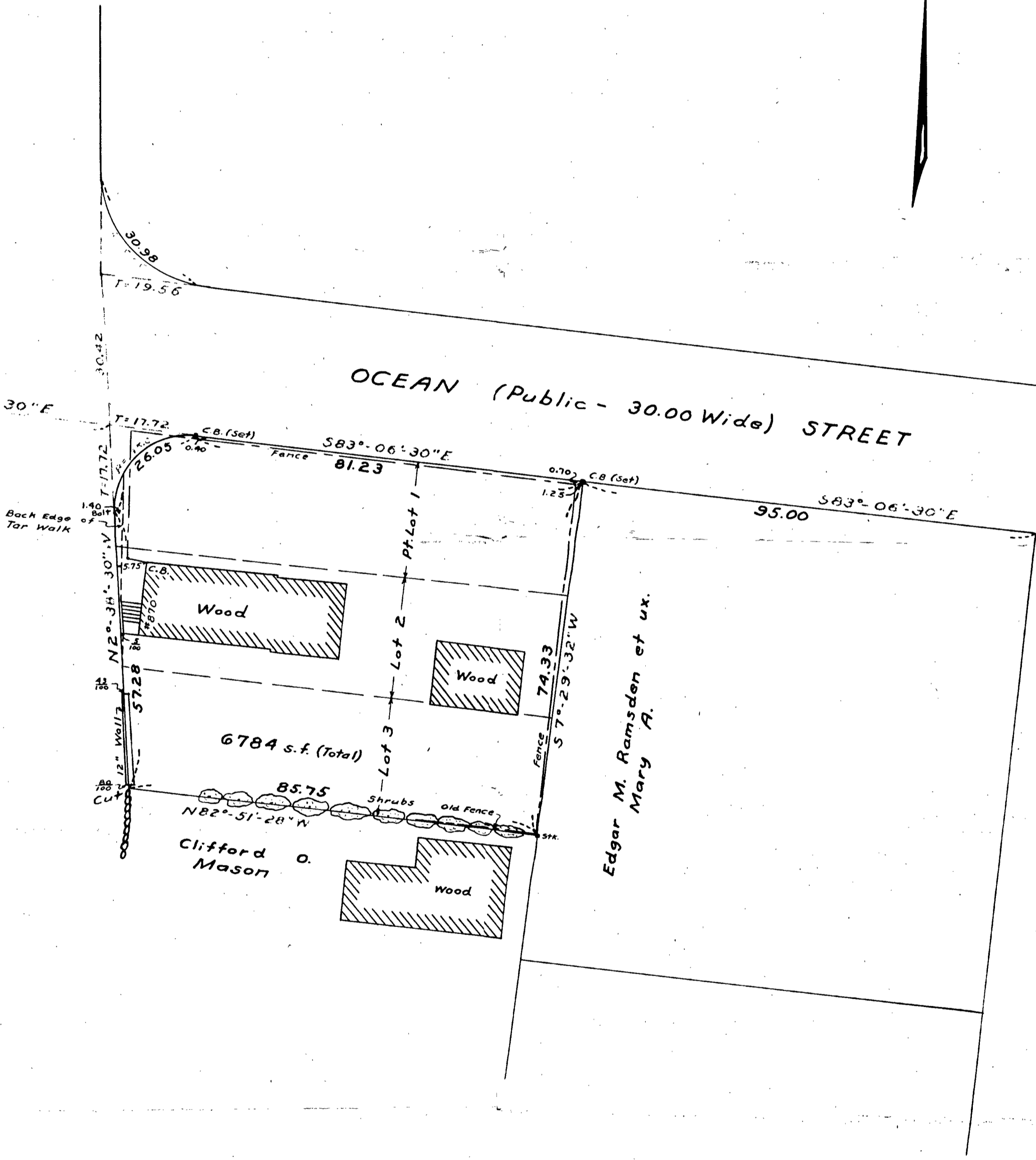
Ld. Ct. Case No. 1963-36

SONOMA
(Private -
40.00 Wide)
ROAD

EAST SQUANTUM (Public

OCEAN (Public - 30.00 Wide) STREET

ALFRED (Private - 30.00 Wide) ST.



Plan of Land in Quincy, Mass.
Scale 20 feet to an inch
July 26, 1960
Ernest W. Branch Inc, Civil Eng's
11 Adams Building, Quincy

Approval Under Subdivision Control
Law Not Required
Date: 7-26-60
[Signature]
Chairman Quincy Planning Board

I certify that this actual survey was made on
the ground in accordance with Land Court
instructions of 1959 between July 21 and
July 26, 1960.

July 27, 1960 *Robert S. Booth Jr.*, Engineer
11 Adams Building, Quincy

