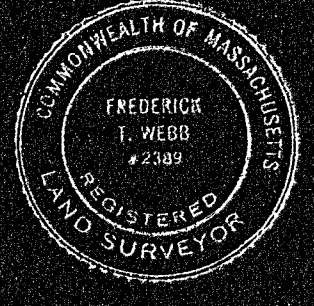


PLAN OF LAND IN WEYMOUTH, NORFOLK COUNTY, MASS.

SCALE: 1"=30'

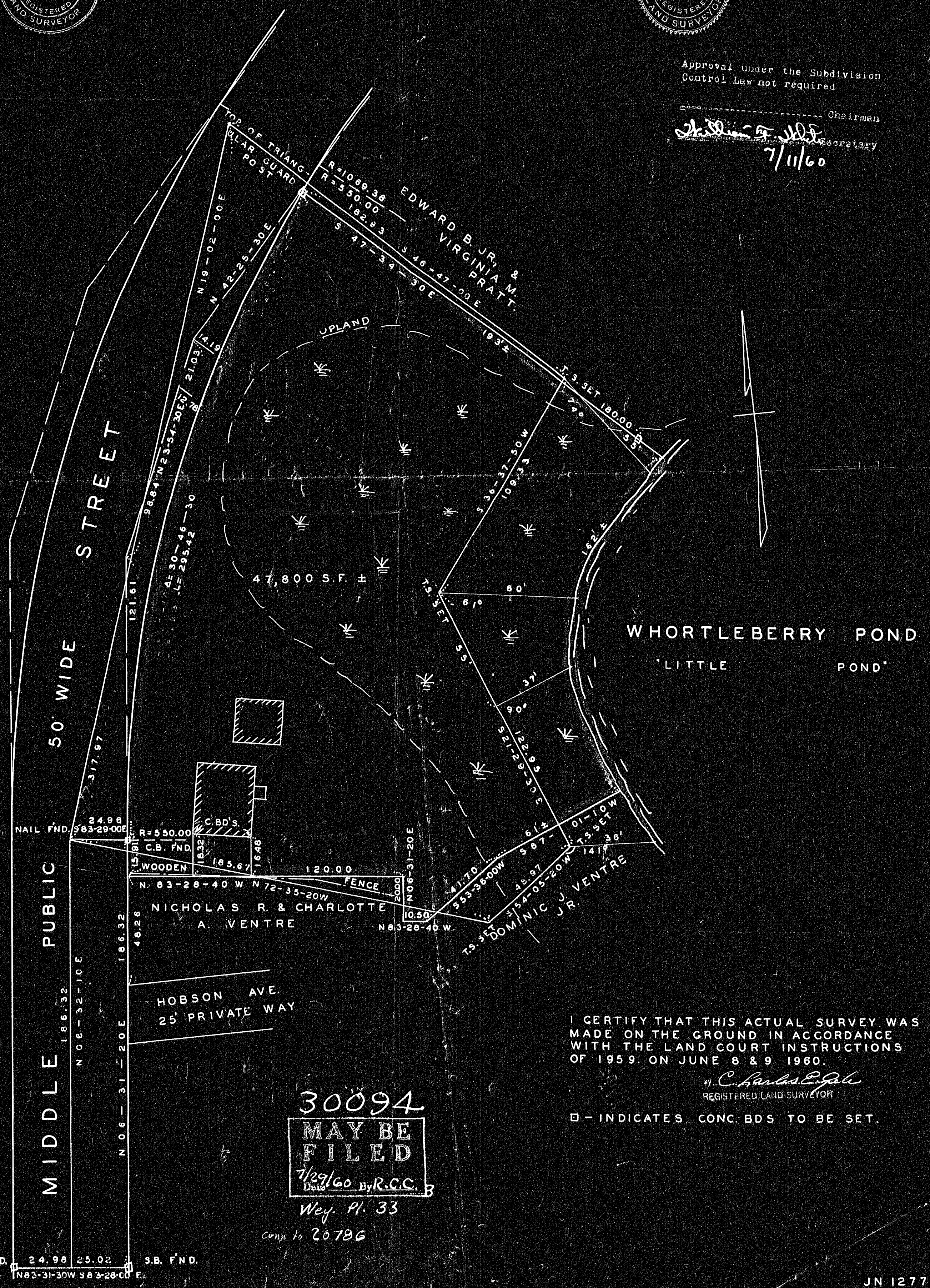
JUNE 28, 1960

THE SCHUYLER CLAPP COMPANY
BRAintree, MASS.



Approval under the Subdivision Control Law not required

Charles E. Gale Chairman
Frederick F. Webb Secretary
7/11/60



I CERTIFY THAT THIS ACTUAL SURVEY WAS MADE ON THE GROUND IN ACCORDANCE WITH THE LAND COURT INSTRUCTIONS OF 1959. ON JUNE 8 & 9 1960.

Charles E. Gale
REGISTERED LAND SURVEYOR

□ - INDICATES CONC. BDS TO BE SET.

S.B. FND. 24.98 25.02 S.B. FND.
N 83-31-30W S 83-28-00E