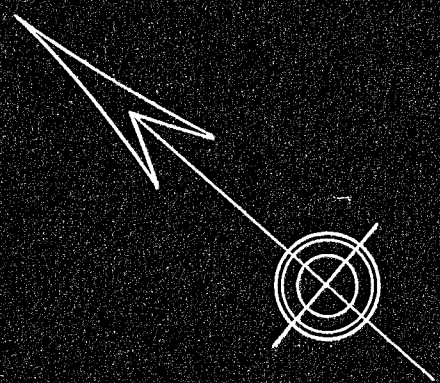


# PLAN OF LAND IN BRAINTREE, NORFOLK CO., MASS.

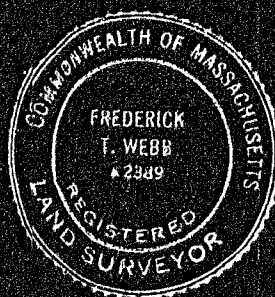
SCALE: 1"=20'

JUNE 25, 1959.

THE SCHUYLER CLAPP COMPANY  
BRAINTREE, MASS.



I CERTIFY THAT THIS ACTUAL SURVEY WAS MADE ON THE GROUND IN ACCORDANCE WITH THE LAND COURT INSTRUCTIONS OF 1950 IN JUNE, 1959



RE-EXAMINED JULY 1960

*Frederick T. Webb*

by *Frederick T. Webb*  
REGISTERED LAND SURVEYOR

FEDERATED DEPARTMENT STORES INC.  
L.C. CASE 28120

TRUSTEES OF SHOPPING CENTER INVESTMENT TRUST

C.B. MISSING 7-13-60  
S 43 40 10 E 339.53

C.B.  
C.B. MISSING 7-13-60

N 44 59 40 E  
94.07

132.12

TRUSTEES OF SHOPPING CENTER INVESTMENT TRUST

COMM. OF MASS.

241.25

S 43 35 30 E

DRAINAGE EASEMENT

9507 SF ±

NORFOLK REGISTRY OF DEEDS  
REC. JUNE 13, 1958, BK. 3643  
PG. 461

NORFOLK REGISTRY OF DEEDS  
REC. OCT. 6, 1958, BK. 3673 PG. 390

TRUSTEES OF SHOPPING CENTER INVESTMENT TRUST  
L.C. CASE 28120

302.80  
S 36° 23' 13" E

Δ = 7° 20' 22"  
T = 32.07  
R = 5000.00  
L = 64.05

N 87° 32' 35" E

NORFOLK REGISTRY OF DEEDS  
REC. OCT. 6, 1958, BK. 3673 PG. 433

NORFOLK REGISTRY OF DEEDS  
REC. JUNE 13, 1958, BK. 3643 PG. 484

PLAN IN BK. 3329 PG. 416

302.02

N 42° 23' 53" W

ACCESS

93.83 M.H.B.

M.H.B.

319.69

GRANITE

(STATE HIGHWAY)

STREET

30080 A-1

MAY BE FILED  
7-21-60  
Date By *CWS*

APPROVAL UNDER THE  
SUBDIVISION CONTROL LAW  
NOT REQUIRED July 15 1959  
*Joseph M. Maguire*  
AUTHORIZED SIGNATURE FOR  
PLANNING BOARD - TOWN OF BRAINTREE



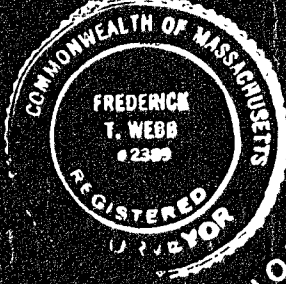
# PLAN OF LAND IN BRAINTREE, NORFOLK COUNTY, MASS.

SCALE 1" = 40'

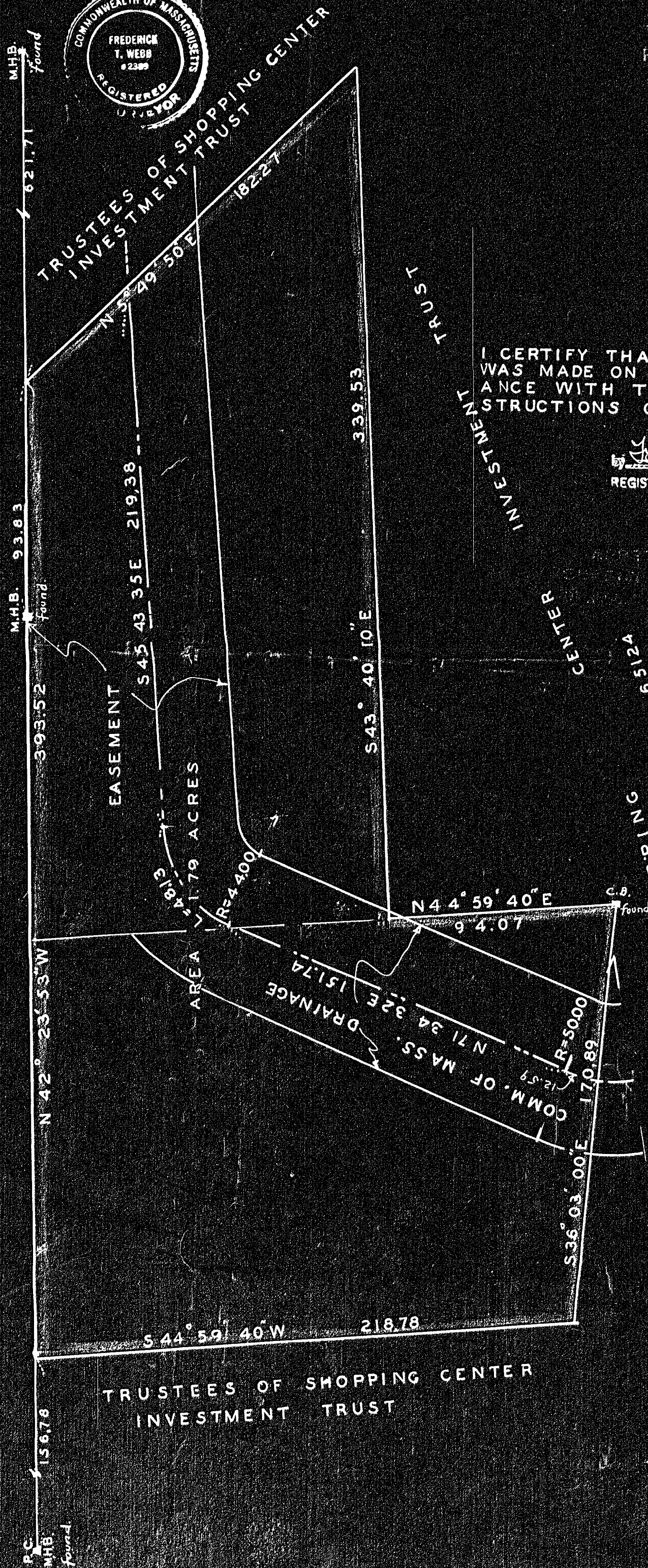
APRIL 5, 1960.

THE SCHUYLER CLAPP COMPANY  
BRAINTREE MASS.

APPROVAL UNDER THE  
MEDIVISION CONTROL LAW  
NOT REQUIRED. *April 26, 1960*  
*Joseph M. Magaldi*  
AUTHORIZED SIGNATURE FOR  
PLANNING BOARD - TOWN OF BRAINTREE



VARIABLE WIDTH  
PUBLIC STREET  
GRANITE STATE HIGHWAY LAYOUT OF MAY 14, 1957.



I CERTIFY THAT THIS ACTUAL SURVEY  
WAS MADE ON THE GROUND IN ACCORD-  
ANCE WITH THE LAND COURT IN-  
STRUCTIONS OF 1959, APRIL 6 1960.

*Frederick T. Webb*  
REGISTERED LAND SURVEYOR

FILED  
WITH TRUSTEES OF SHOPPING CENTER INVESTMENT TRUST

30080 A-2  
MAY BE FILED  
7-21-60  
Date By CES