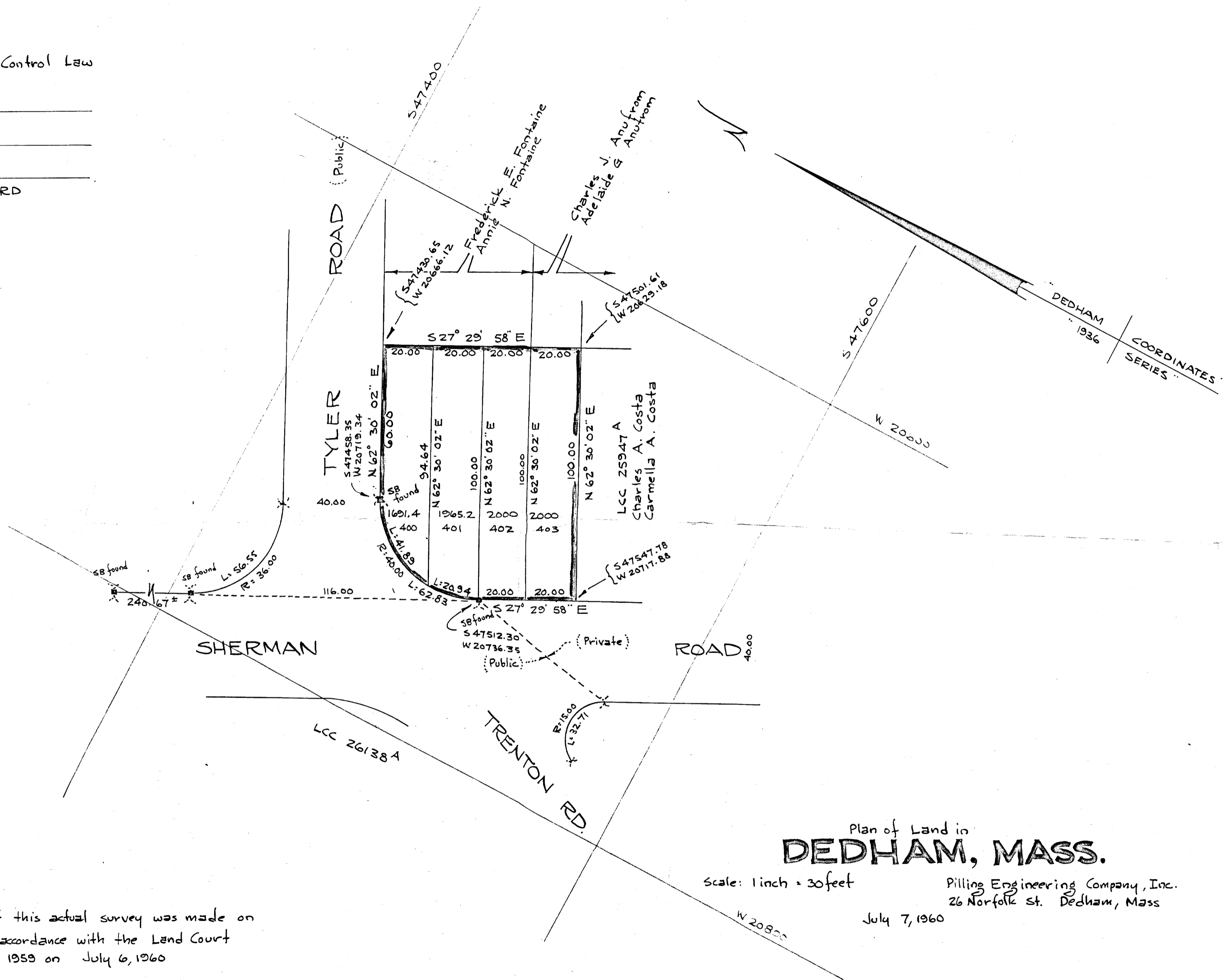


Approval under Subdivision Control Law  
not required

DEDHAM PLANNING BOARD



Plan of Land in  
**DEDHAM, MASS.**

Scale: 1 inch = 30 feet

Pilling Engineering Company, Inc.  
26 Norfolk St. Dedham, Mass

July 7, 1960

I certify that this actual survey was made on  
the ground in accordance with the Land Court  
Instructions of 1959 on July 6, 1960

July 7, 1960

*Howard L. Millard*  
Registered Land Surveyor

# 30074 Reg.  
*Charles A. Costa,*  
*Petitioner*

