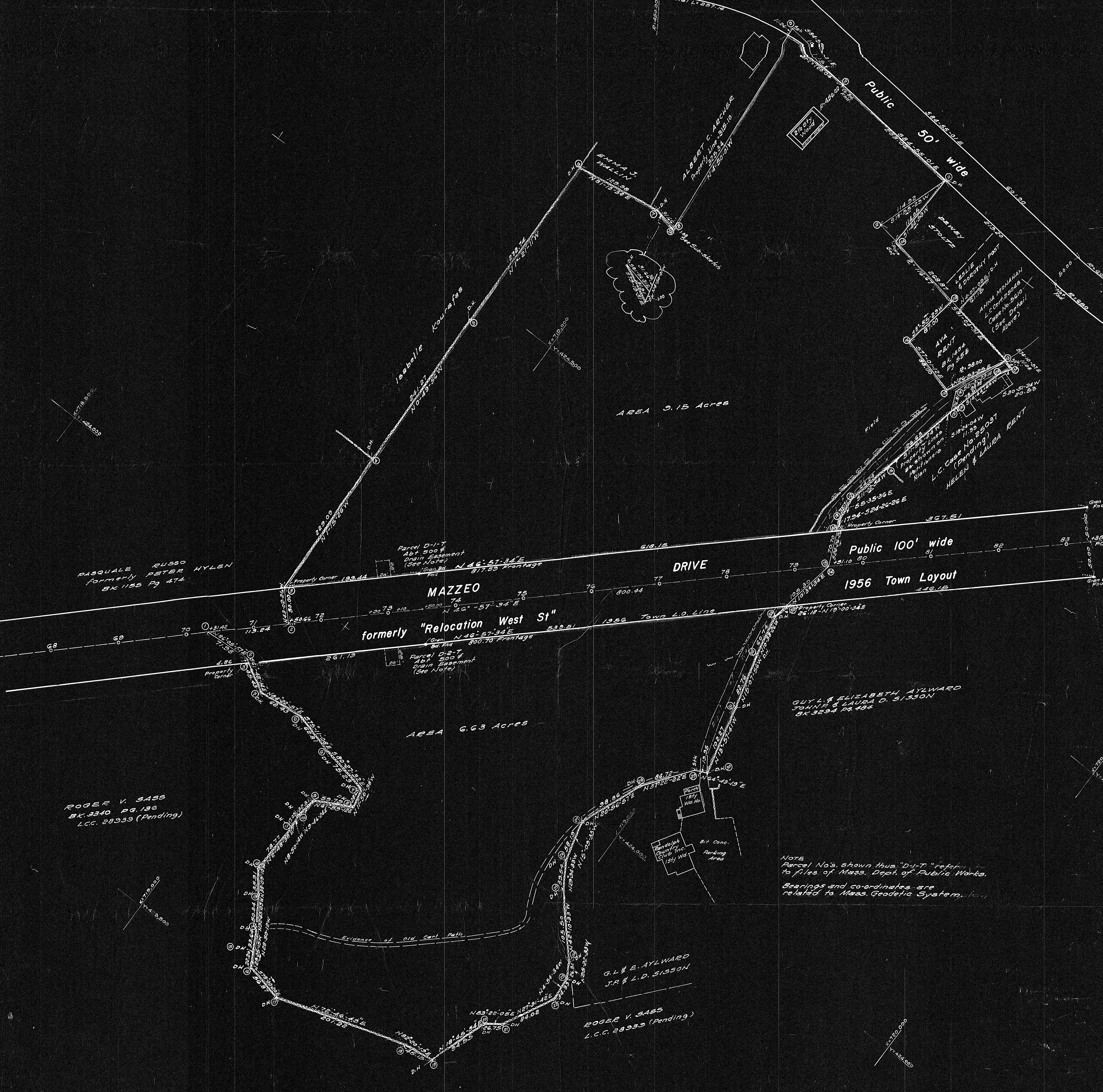


WEST ST.
L.C. No. 5610
NOV. 15, 1933
N 87° 18' 14" E 945.13

DETAIL SHOWING
TIE-IN TO L.C. NO. 5610



AREA 9.15 Acres

AREA 6.63 Acres

Public 50' wide
Public 100' wide
1956 Town Layout

GUY L. & ELIZABETH AYLRARD
JOHN & LAUREN D. SIBSON
BK 3204 PG. 434

NOTE
Parcel No's shown thru "D-I-T" refer to
files of Mass. Dept. of Public Works.
Bearings and coordinates are
related to Mass. Geodetic System.

PLAN OF LAND IN RANDOLPH
Scale: Forty feet to an inch

R.T. Wall & H.M. Hansen - Surveyors
Jan. 30, 1960

30037
MAY BE
FILED
Date: 1-31-60
WES

Approval under the "Subdivision
Control Law" not required.

Randolph Planning Board MARCH 9, 1960
Manuel Logan
Roger V. SASS
Ray J. O'Neill

We certify that this actual survey
was made on the ground in accordance
with the General Court Instructions of 1959
between June 1st 1959 and Dec. 31st 1959

Harold M. Hansen
9 Hendricks St
Avon, Mass.
Raymond J. Wall
44 Vesey St
Randolph, Mass.