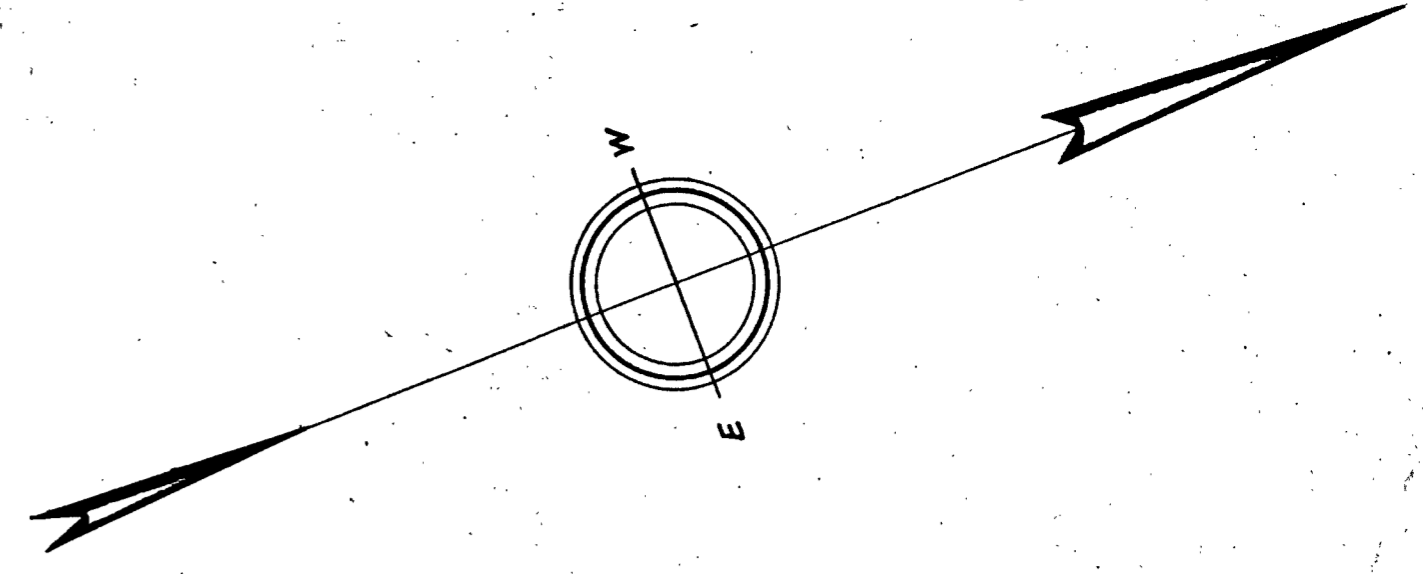


N



Town of Braintree Water Dept.

Randolph and Holbrook Water Shed

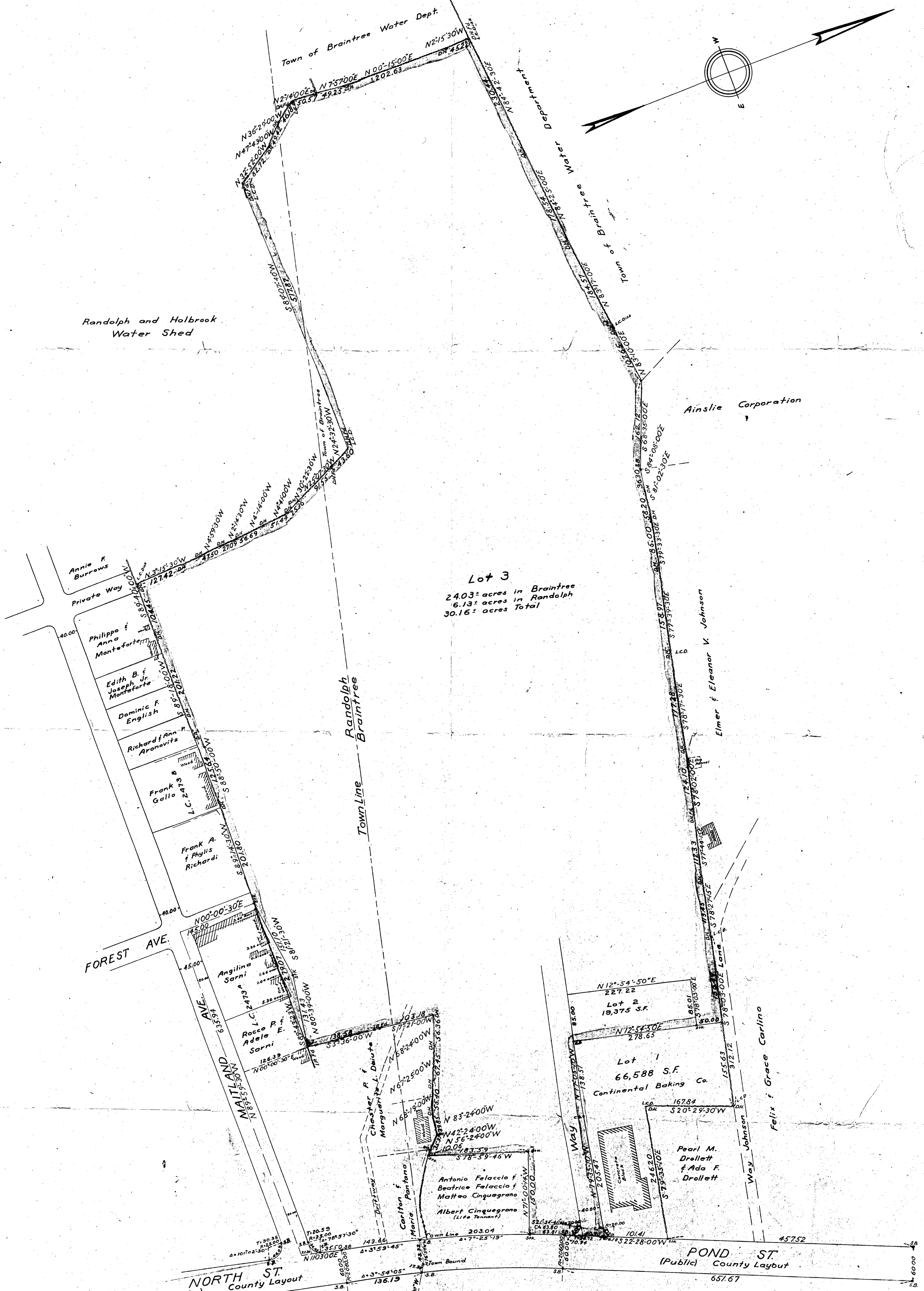
Department of Braintree Water

Ainslie Corporation

Lot 3
2403± acres in Braintree
6.13± acres in Randolph
30.16± acres Total

Elmer & Eleanor V. Johnson

Felix & Grace Carlino



Plan of Land in Braintree and Randolph, Mass.
Scale 80 feet to an inch
May 16, 1960
Ernest W. Branch Inc., Civil Eng.
11 Adams Building, Quincy



Approval under subdivision control law not required.
Date: _____

Randolph Planning Board

I certify that this actual survey was made on the ground in accordance with the Land Court instructions of 1959 between Oct. 3, 1958 and May 2, 1960.
May 16, 1960 Robert J. Booth, Engineer
11 Adams Building, Quincy

Approval under subdivision control law not required.
Date: _____

Braintree Planning Board