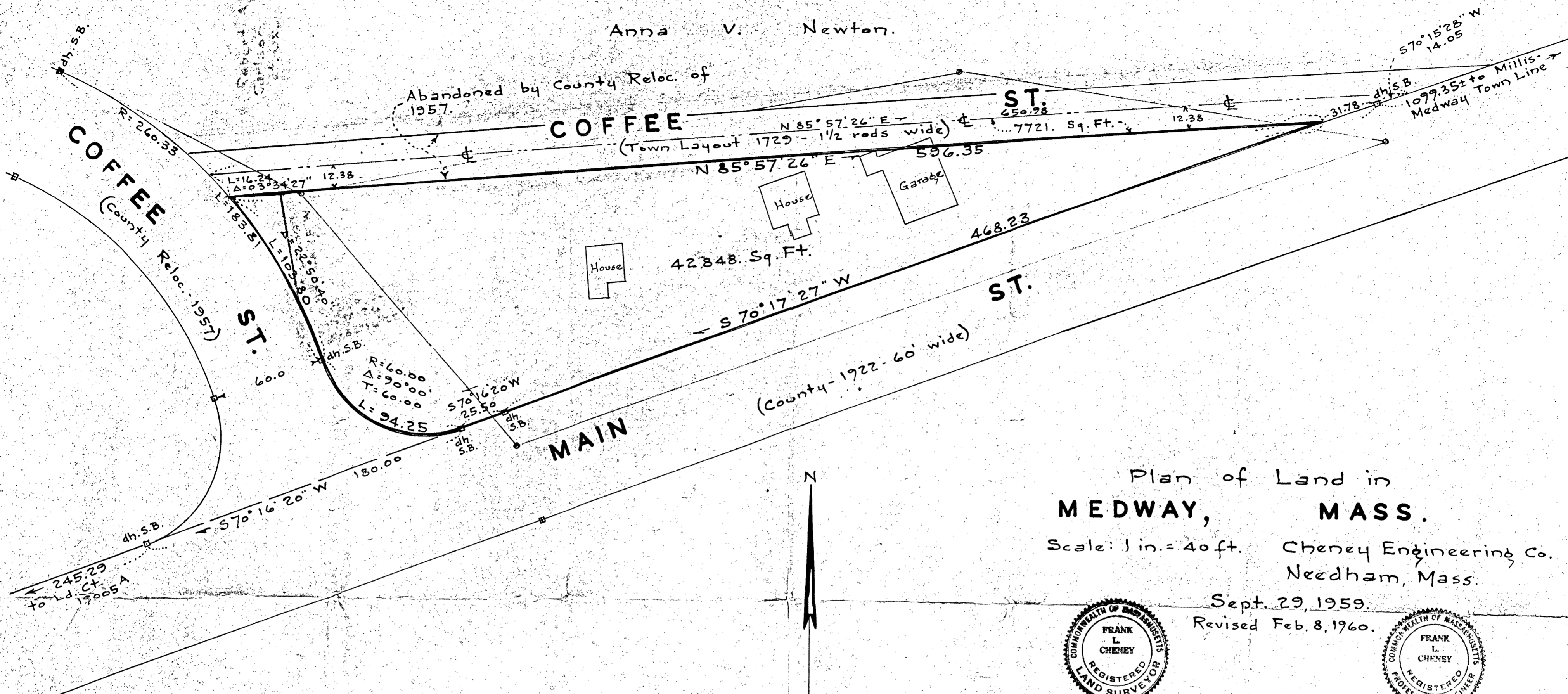


Anna V. Newton.

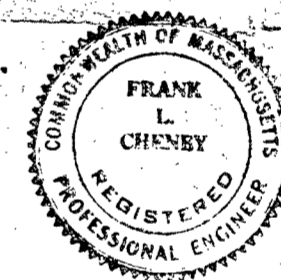
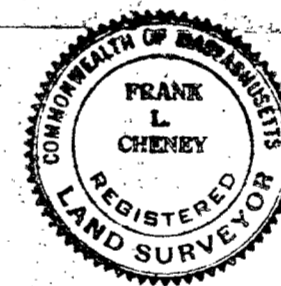
Abandoned by County Reloc. of
1957.



Plan of Land in
MEDWAY, MASS.

Scale: 1 in. = 40 ft. Cheney Engineering Co.
Needham, Mass.

Sept. 29, 1959.
Revised Feb. 8, 1960.



I certify that this actual
survey was made on the ground
in accordance with the Land
Court instructions of 1950.

Frank L. Cheney
Civil Engineer

Approval Under The Subdivision
Control Law NOT Required:

Planning Board
Date _____

Survey closure 1: 15937.

Property Line Traverse					
Bearing	Dist.	N.	S.	E.	W.
N 85° 57' 26" E	596.35	42.04		594.87	
S 70° 17' 27" W	468.23		157.91		440.80
S 70° 16' 20" W	85.50		28.86		80.48
N 19° 43' 40" W	60.00	56.48			26.25
N 33° 09' 00" W	103.14	88.24	chord		53.34
N 88° 48' 28" W	65.86	64.20			
	186.76	186.77		594.87	594.87