

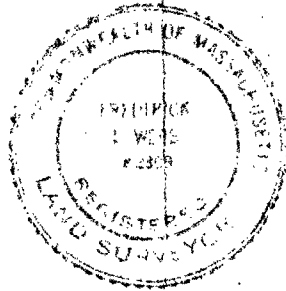
PLAN OF LAND IN  
 SHARON NORFOLK CO., MASS.

SCALE: 1"=40'

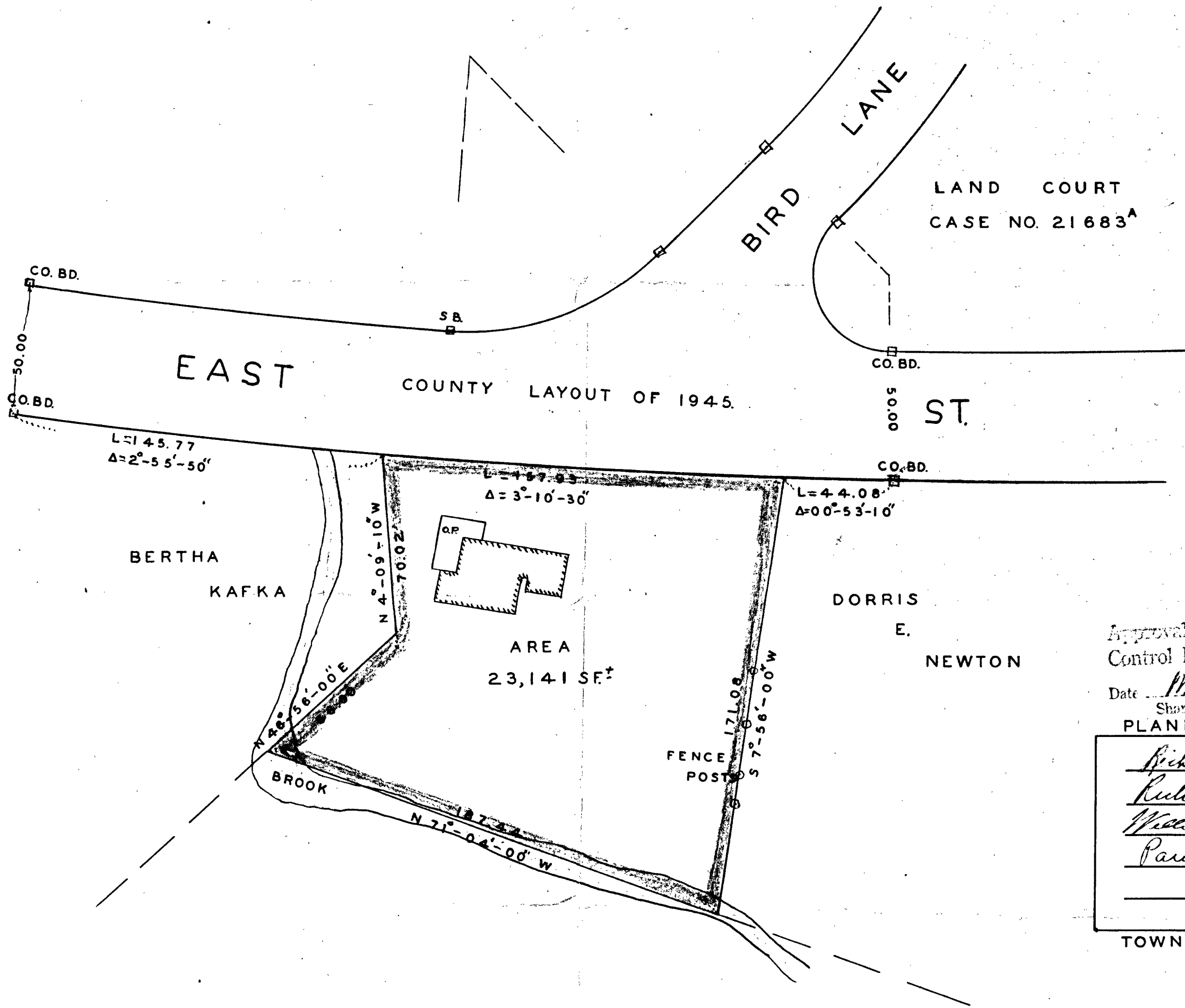
MARCH 4, 1960.

THE SCHUYLER CLAPP CO.  
 BRAintree MASS.

I CERTIFY THAT THIS ACTUAL SURVEY  
 WAS MADE ON THE GROUND IN ACCORDANCE  
 WITH THE LAND COURT INSTRUCTIONS OF  
 1959 ON OR BETWEEN FEB. 20 AND FEB. 28.



*Frederick T. Webb*



LAND COURT  
 CASE NO. 21683<sup>A</sup>

Approval under Subdivision  
 Control Law not required.  
 Date March 23, 1960  
 Sharon Planning Board  
 PLANNING BOARD

*Richard S. Bolan*  
*Richard H. Hayden*  
*William A. Hunt*  
*Paul J. Berger*

TOWN OF SHARON

EVA R. EPSTEIN