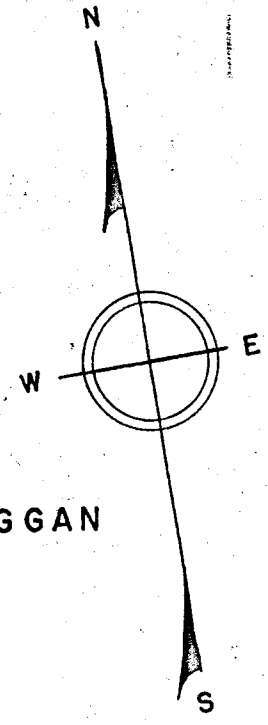
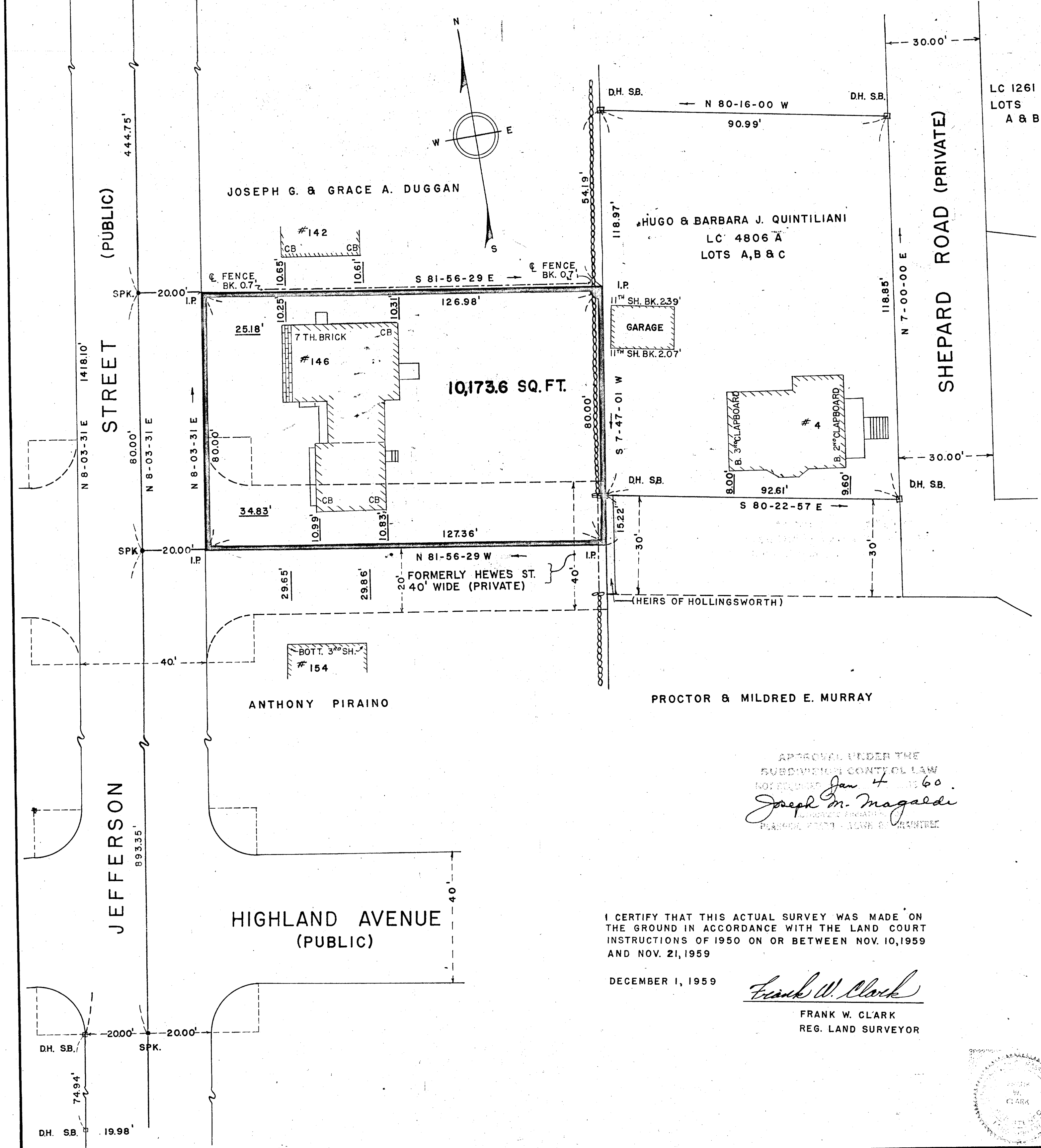


PLAN OF LAND IN BRAINTREE, MASS.

SCALE 1" = 20' DECEMBER 1, 1959
DAMIGELLA & CLARK
CIVIL ENGINEERS & SURVEYORS - BOSTON, MASS.



APPROVAL UNDER THE
SUBDIVISION CONTROL LAW
NOT REQUIRED *Jan 4 1960*
Joseph M. Magaldi
PLANNING BOARD - TOWN OF BRAintree

I CERTIFY THAT THIS ACTUAL SURVEY WAS MADE ON
THE GROUND IN ACCORDANCE WITH THE LAND COURT
INSTRUCTIONS OF 1950 ON OR BETWEEN NOV. 10, 1959
AND NOV. 21, 1959

DECEMBER 1, 1959

Frank W. Clark
FRANK W. CLARK
REG. LAND SURVEYOR

