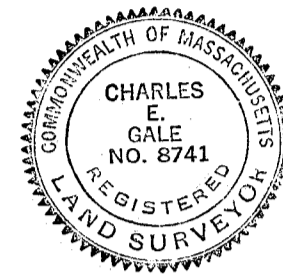
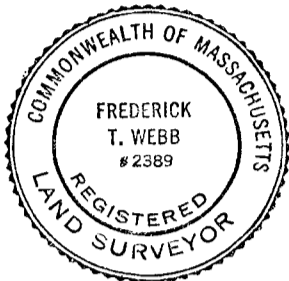


PLAN OF LAND IN RANDOLPH, NORFOLK COUNTY, MASS.

SCALE: 1"=20'

FEB. 5, 1960

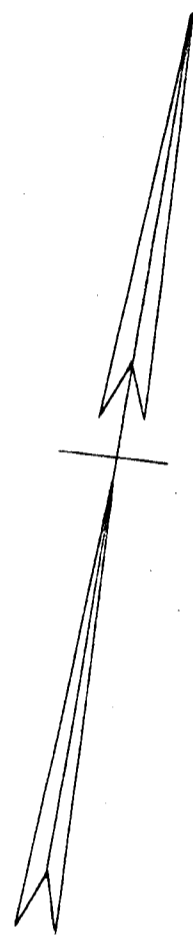
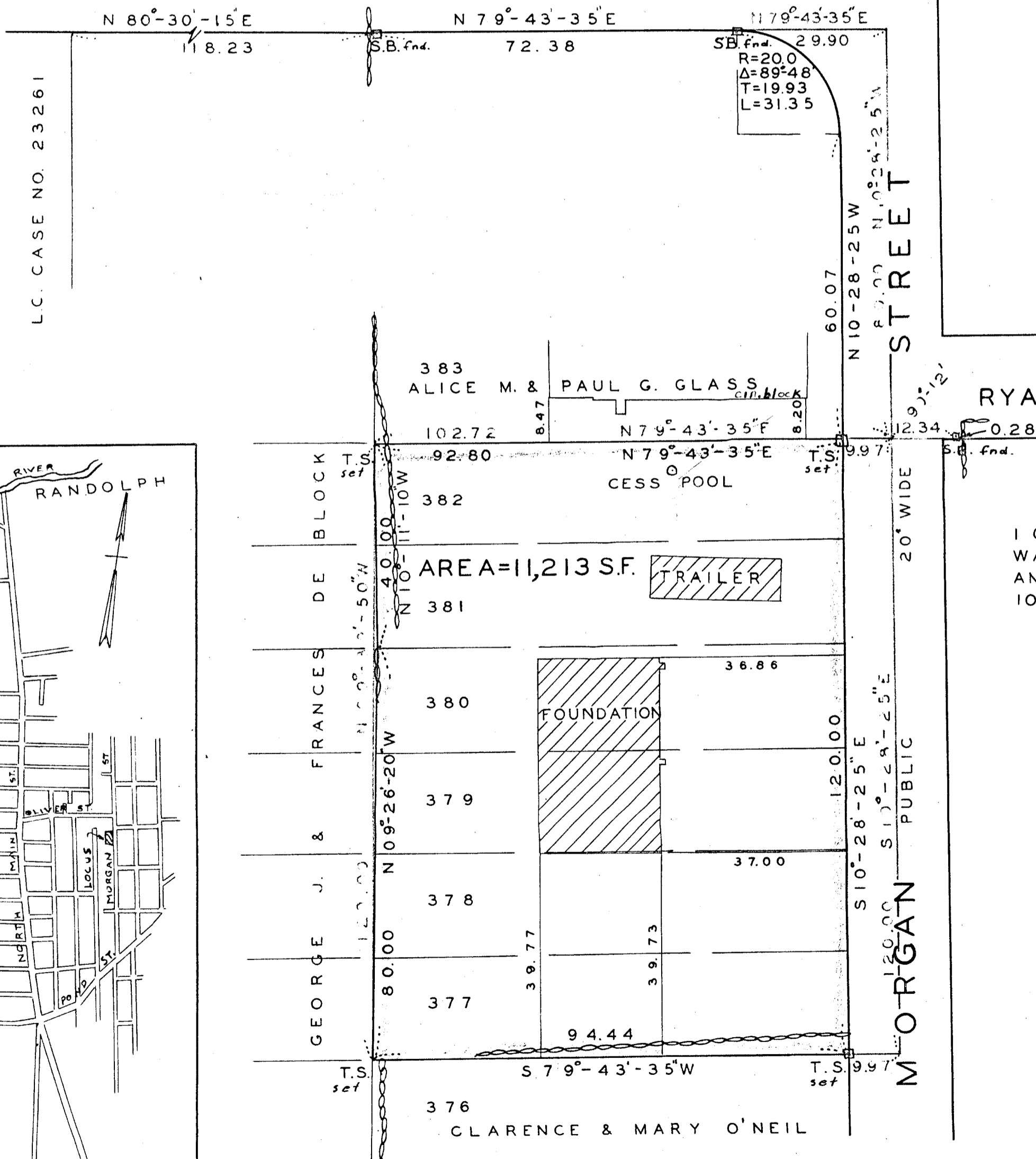
THE SCHUYLER CLAPP COMPANY
BRAINTREE, MASS.



FOR LAND REGISTRATION PURPOSES ONLY

*Memoranda to
Leo P. O'Neill
Robert A. Howe
Roger M. ...*

OLIVER PUBLIC STREET
COUNTY LAYOUT OF MAR. 18, 1941



RYAN PRIVATE ST.

I CERTIFY THAT THIS ACTUAL SURVEY WAS MADE ON THE GROUND IN ACCORDANCE WITH THE LAND COURT INSTRUCTIONS OF 1959 ON FEB. 1, 1960.

Charles E. Gale
REGISTERED LAND SURVEYOR

LOT NO'S. REFER TO A PLAN ENTITLED SPOTLESS TOWN IN NORFOLK REG. PLANBOOK 58 PLAN NO. 2758.

