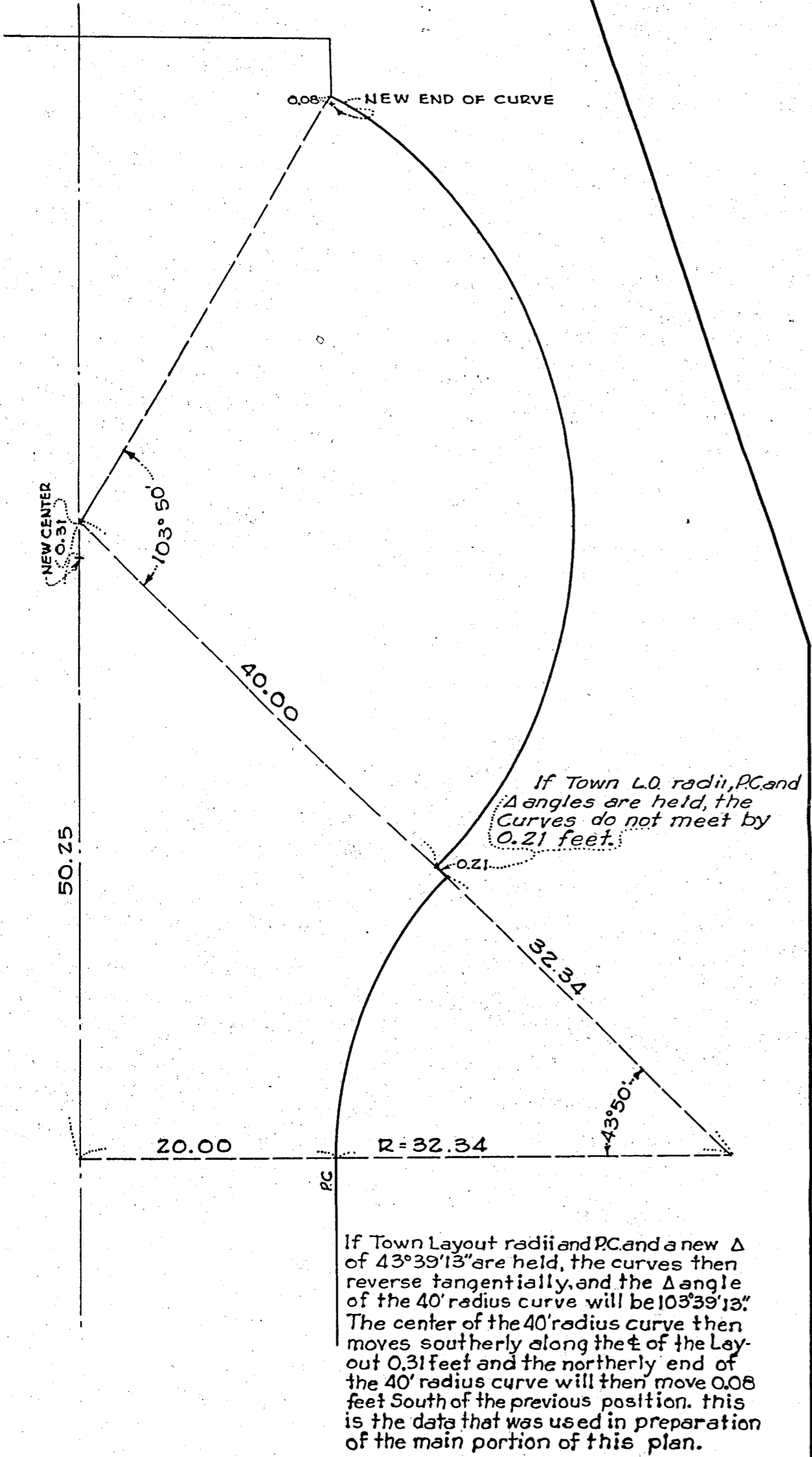
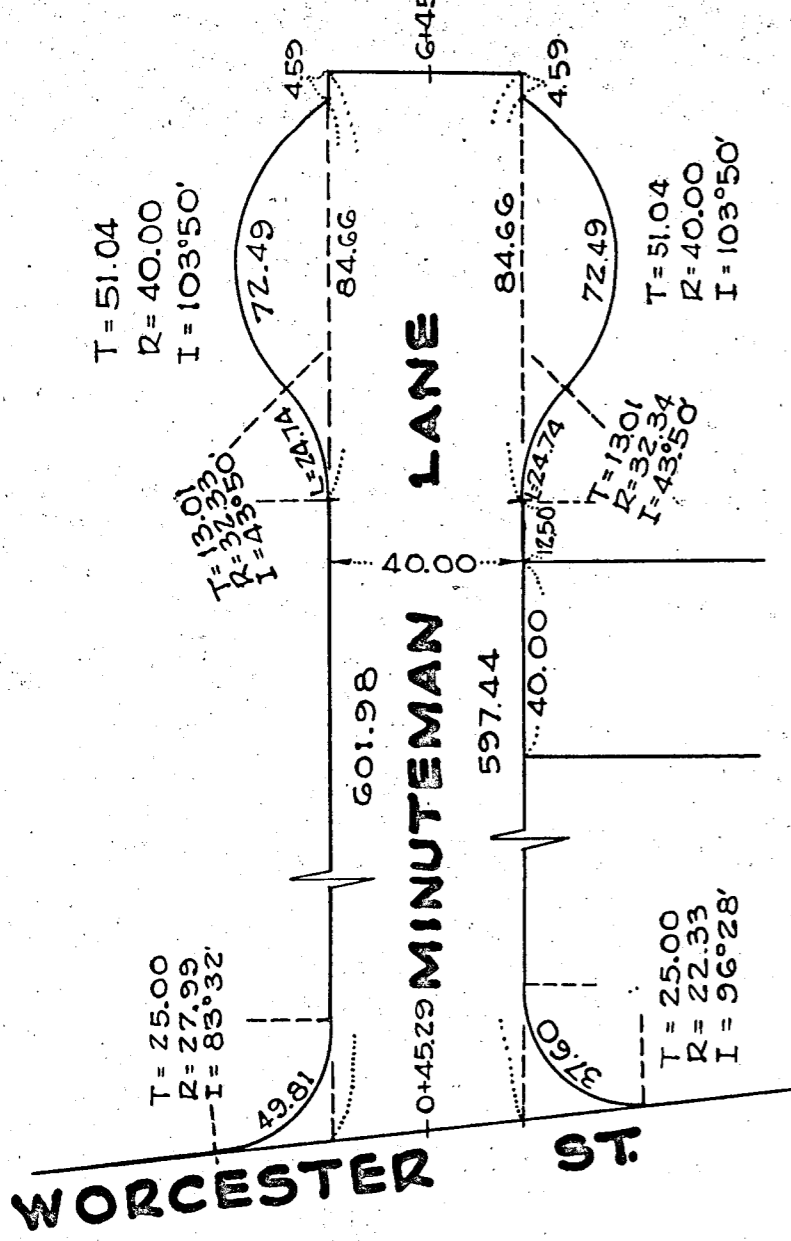


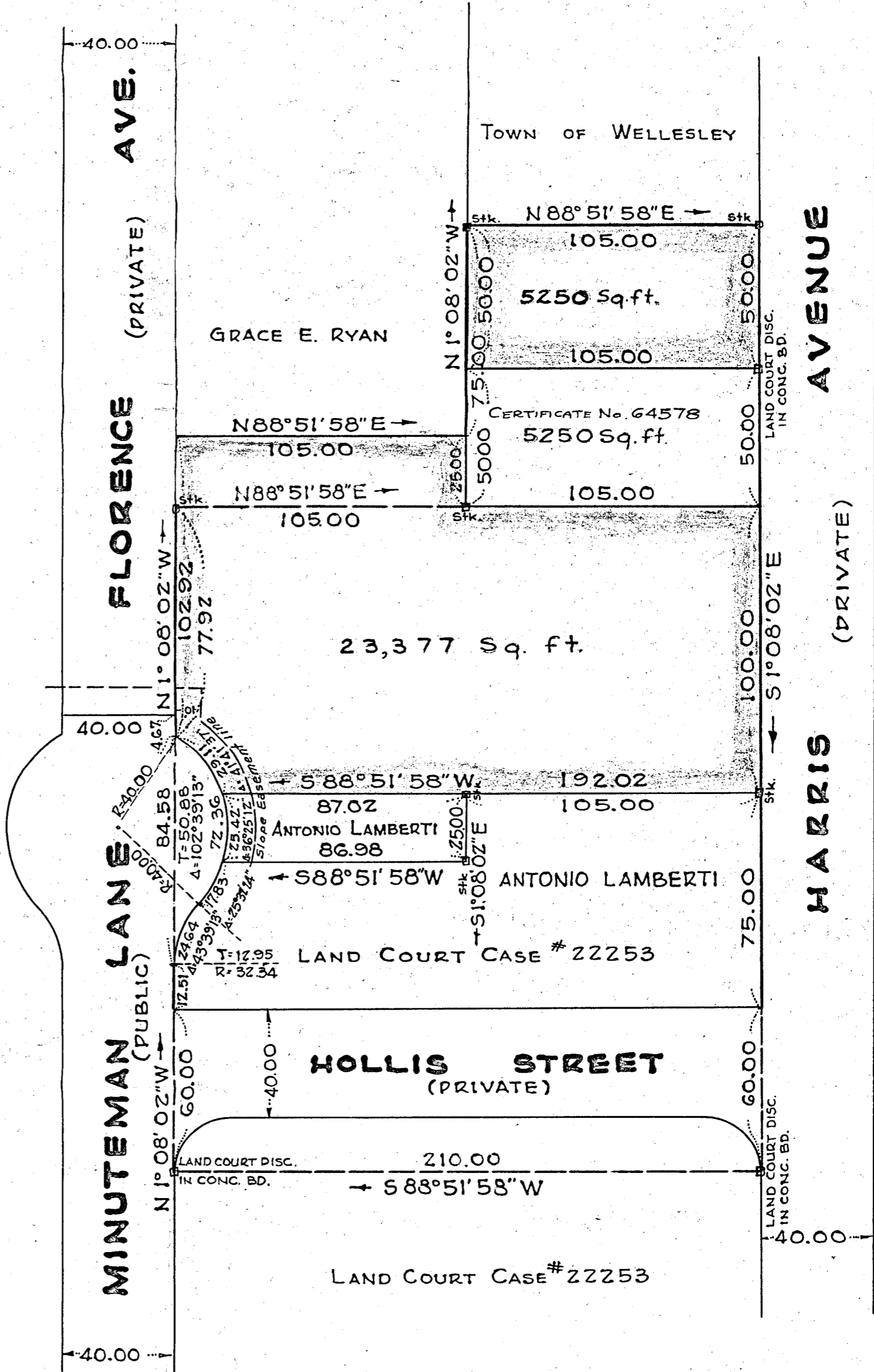
# SUB-SKETCH # 1

SHOWING DATA COPIED FROM 1959 TOWN LAYOUT



## SUB-SKETCH # 2

Showing Discrepancies of Town Layout Data.



## LAND IN WELLESLEY

SCALE: 40 FEET TO AN INCH  
 SEPTEMBER 23, 1959  
 JAMES P. DUNNE, CIVIL ENGINEER  
 23 BEVERLY ROAD, WELLESLEY MASS.



I certify that this plan was made in accordance with Land Court instructions of 1950.  
 Sept. 23, 1959  
 James P. Dunne  
 23 Beverly Road  
 Wellesley Mass.

I certify that this actual survey was made on the ground in accordance with the Land Court instructions of 1950.  
 Sept. 12, 1959  
 James P. Dunne

APPROVAL UNDER THE SUBDIVISION CONTROL LAW NOT REQUIRED  
 WELLESLEY PLANNING BOARD

James W. Bourn  
 Angus MacNeil  
 Robert White

A MAJORITY OF THE PLANNING BOARD

DATE: January 8, 1960