

PLAN OF LAND IN  
WEYMOUTH, NORFOLK CO., MASS.

SCALE: 1"=40' OCT. 13, 1959

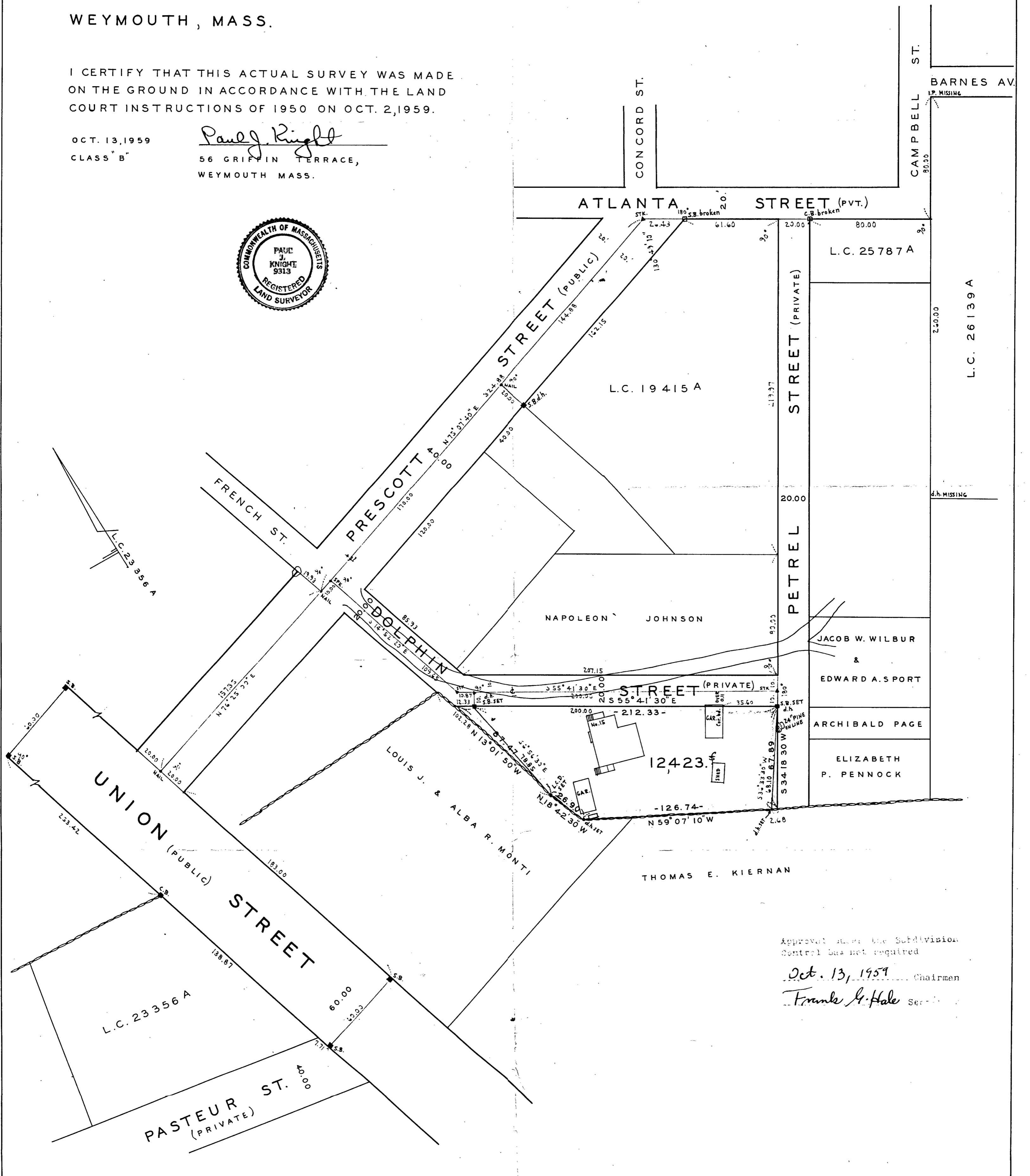
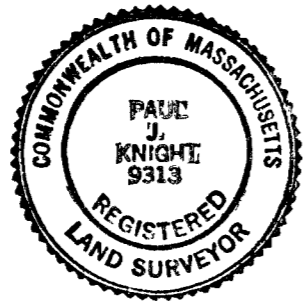
PAUL J. KNIGHT, REG. SURV.

WEYMOUTH, MASS.

I CERTIFY THAT THIS ACTUAL SURVEY WAS MADE  
ON THE GROUND IN ACCORDANCE WITH THE LAND  
COURT INSTRUCTIONS OF 1950 ON OCT. 2, 1959.

OCT. 13, 1959  
CLASS "B"

*Paul J. Knight*  
56 GRIFFIN TERRACE,  
WEYMOUTH MASS.



Approval under the Subdivision  
Control Law not required  
Oct. 13, 1959 Chairman  
*Frank A. Hale* Secretary