

PLAN OF LAND IN WEYMOUTH, NORFOLK CO., MASS.

SCALE: 1" = 40' DEC. 2, 1959

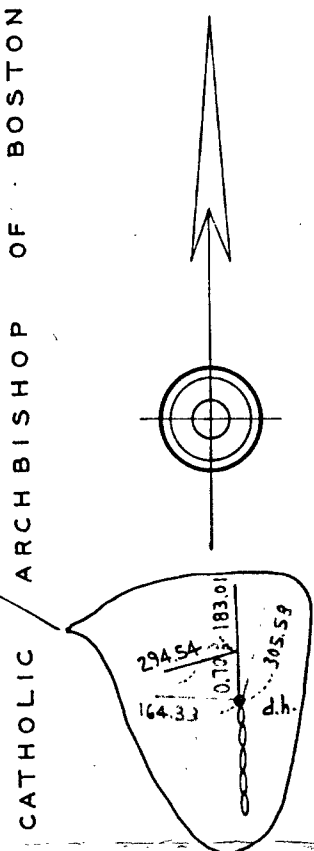
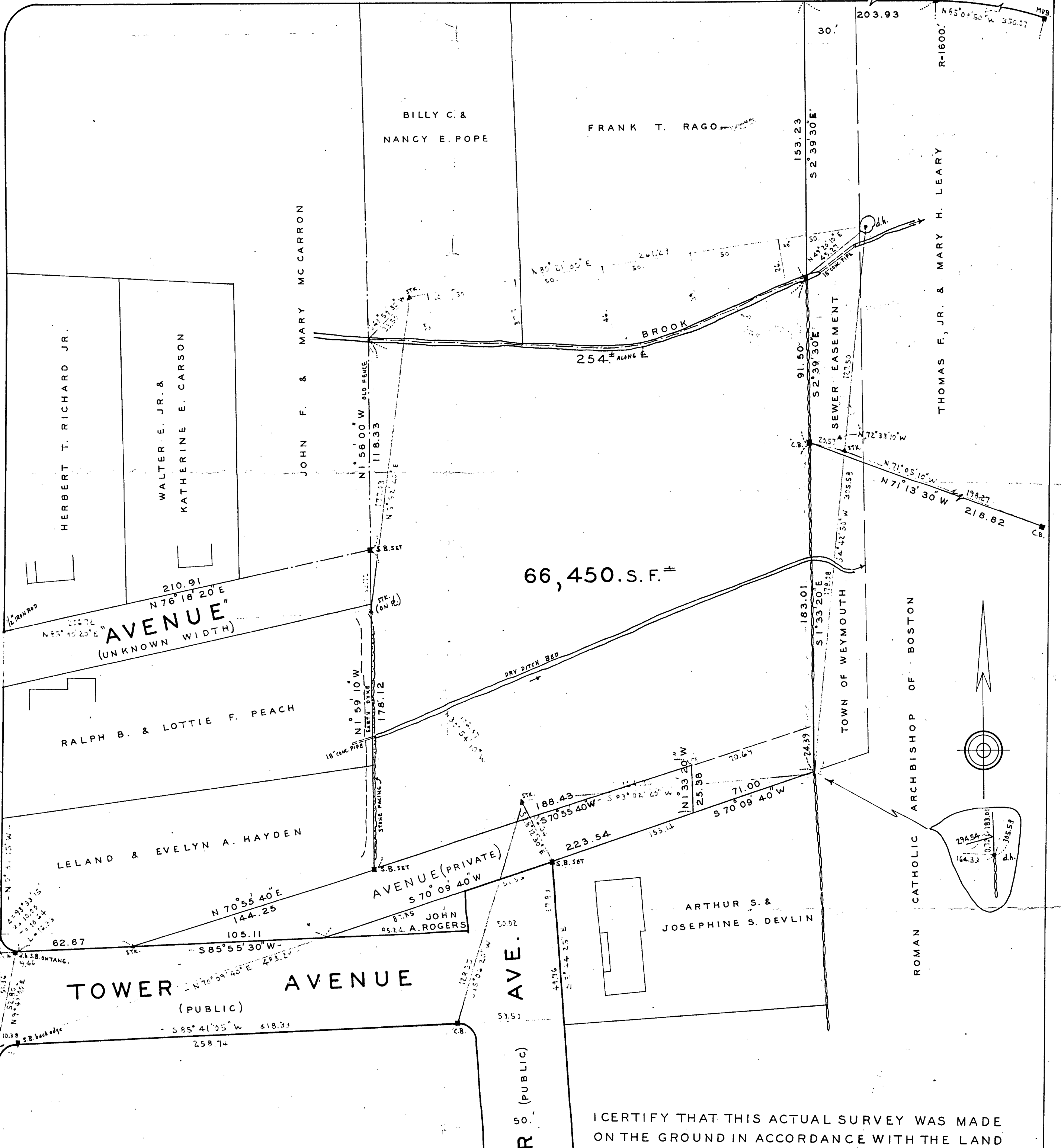
PAUL J. KNIGHT, REG. SURV.
WEYMOUTH, MASS.



(STATE HIGHWAY - SEPT. 3, 1929)

PARK AVE.

TORREY STREET (PUBLIC)



12/14/59
 Approved and returned to the owner
[Signature]
 Surveyor

I CERTIFY THAT THIS ACTUAL SURVEY WAS MADE ON THE GROUND IN ACCORDANCE WITH THE LAND COURT INSTRUCTIONS OF 1950 ON NOV. 11, 1959.
 DEC. 2, 1959
 CLASS "A"
Paul J. Knight
 56 GRIFFIN TERRACE
 WEYMOUTH, MASS.