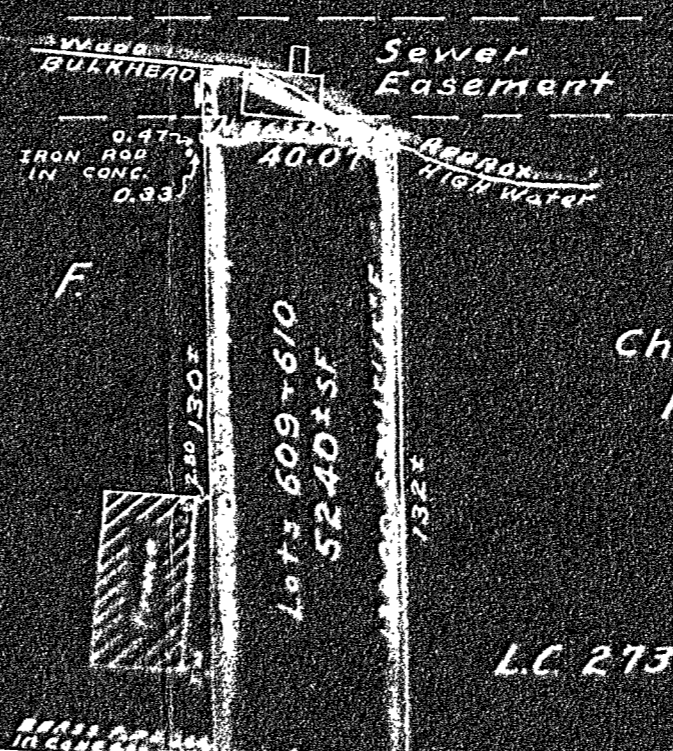


WEYMOUTH FORE RIVER

Rendall C. & Margaret F. Crocker

Charles M. & Isabel MacAndrews



LC 27384A

CIRCLE DRIVE



IDLEWELL BOULEVARD  
PUBLIC

PLEASANTVIEW AVE.

N 7° 15' 15\"/>

210.00

S.B.

Plan of Land in Weymouth, Mass.  
Scale 40 feet to an inch  
Dec. 12, 1959  
Ernest W. Branch Inc, Civil Eng's.  
11 Adams Building, Quincy

I certify that this actual survey was made on the ground in accordance with Land Court instructions of 1950 On Dec. 8, 1959

Dec. 12, 1959 Robert S. Booth Jr. Engineer

