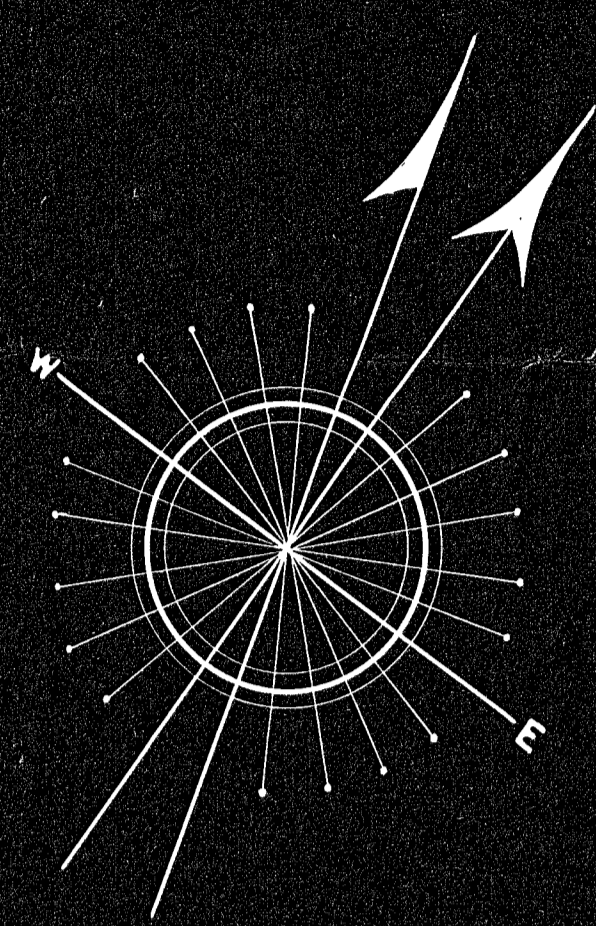
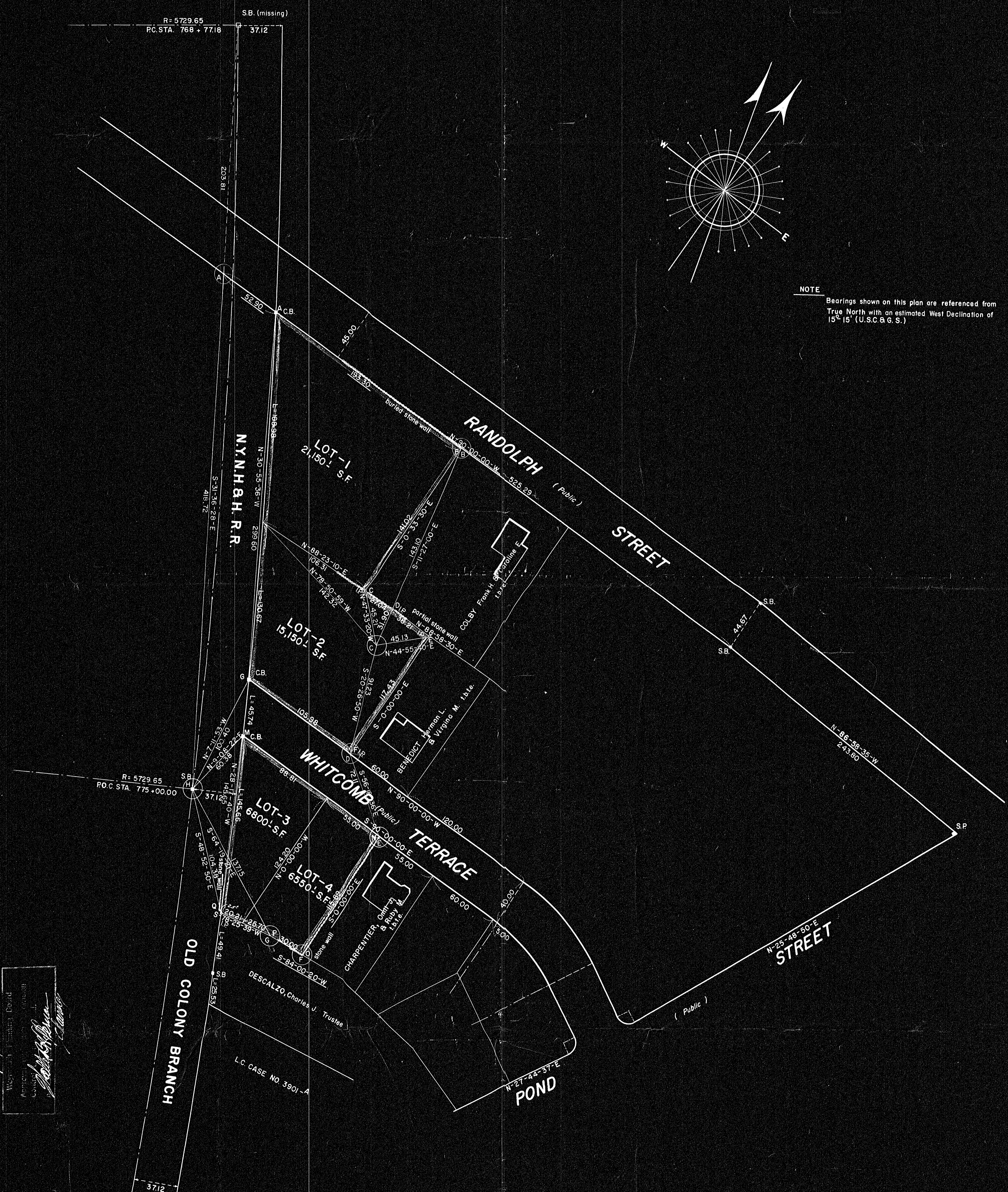


PLAN OF LAND IN SO. WEYMOUTH (NORFOLK) MASSACHUSETTS

SCALE : 1 IN. = 40 FT.
DATE : JAN 2 , 1960
VICTOR F. COLETTI REG. LAND SURVEYOR & CIVIL ENGINEER
QUINCY MASSACHUSETTS



NOTE
Bearings shown on this plan are referenced from True North with an estimated West Declination of 15° 15' (U.S.C. & G.S.)



9/25/60
 Weymouth Planning Board
 Approved by the Planning Board
 on 9/25/60
[Signature]

PARCEL A CLASS "B"

STA	INTERIOR ANG	DEFLECTION ANG	BEARING	DIST	N.	LAT.	S. E.	DEP	W.
A-B	90-33-30	89-26-30	N-30-00-00-E	123.30			141.01	193.70	
B-C	271-03-20	31-05-20	S-01-23-20-E	41.02				1.37	
C-D	179-24-40	0-35-20	N-88-23-10-E	27.04	0.76			27.03	
D-E	88-58-30	91-01-30	N-88-58-30-E	38.21	0.68			38.20	
E-F	90-00-00	90-00-00	S-00-00-00-E	117.43			117.43		
F-G	120-55-36	59-04-24	N-59-04-00-W	105.58				105.58	
G-A	59-04-24	120-55-36	N-30-55-36-W	299.60	257.01			153.38	
				900-00-00	360-00-00	258.45	258.44	259.90	259.96

PARCEL B CLASS "B"

STA	INTERIOR ANG	DEFLECTION ANG	BEARING	DIST	N.	LAT.	S. E.	DEP	W.
M-N	90-00-00	90-00-00	S-90-00-00-E	143.81				143.81	
N-O	95-59-40	84-30-20	S-00-00-00-E	115.89			115.89		
O-P	185-34-41	5-34-41	S-84-00-20-W	30.00			3.13		29.84
P-Q	106-43-19	73-16-41	S-78-25-39-W	45.91			9.21		44.98
Q-M	61-42-20	118-17-40	N-28-17-40-W	145.65	128.25			69.04	
				540-00-00	360-00-00	128.25	128.23	143.81	143.86

I certify that this actual survey was made on the ground in accordance with the LAND COURT INSTRUCTIONS of 1950 on Nov 7 & 14 1959

Date JAN 2 1960
Victor F. Coletti
 REG. LAND SURVEYOR

29673
 MAY BE
 FILED
 1-19-60 R.C.C.
 Date By



Reg. Pl. 49