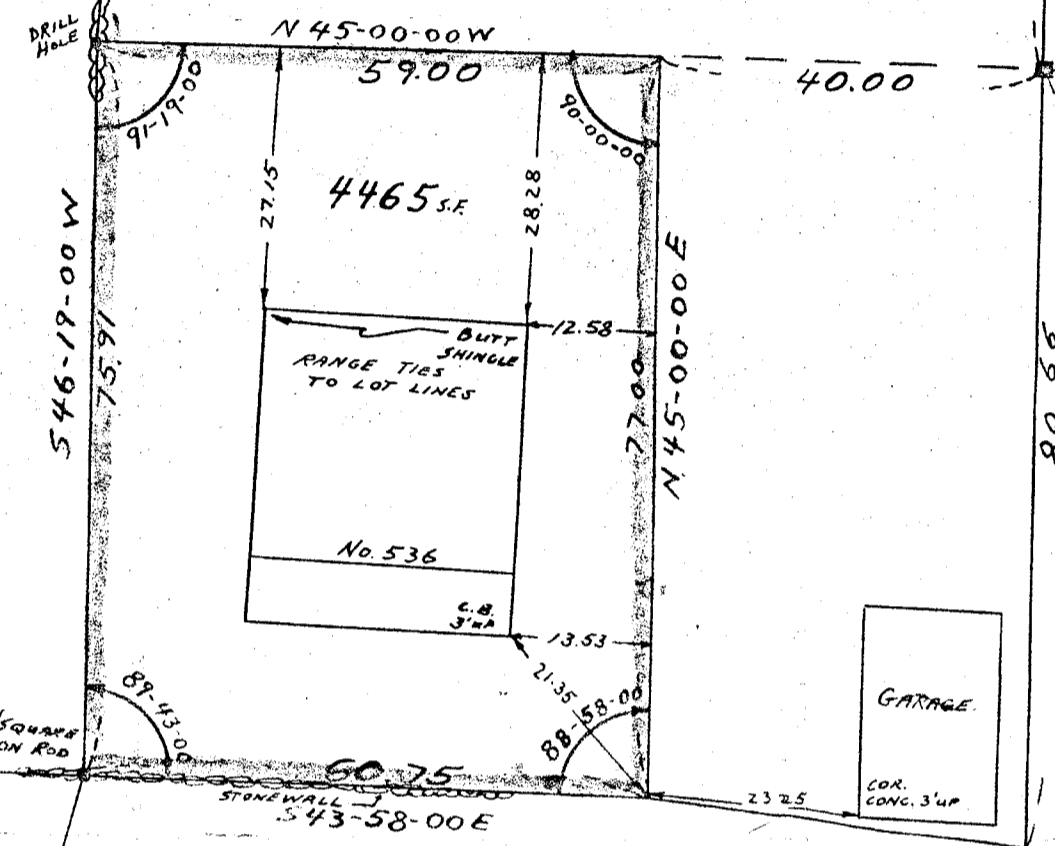


WILLIAM C. TURNER
FANNIE I. TURNER

GRAHAM J. EWING JR.
THERESE E. EWING

L.C. 7416^B

EDWARD T. O'DONNELL
MARY T. O'DONNELL



ESSEX

STREET (PUBLIC)

L.C. 10488^E L.C. 7416^C

I CERTIFY THAT THIS ACTUAL SURVEY WAS
MADE ON THE GROUND IN ACCORDANCE
WITH LAND COURT INSTRUCTIONS OF 1950
ON OCT. 17, 1959

Victor F. Coletti
SURVEYOR

PLAN OF LAND IN
WEYMOUTH ~ MASS.

SCALE 1"=20' NOV. 14, 1959

VICTOR F. COLETTI ~ SURVEYOR
125 BUNKER HILL LANE,
QUINCY, MASS.

ASSUMED BEARING FOR CALCULATION OF LOT.

BEARING	DIST.	SIN.	COS.	N.	S.	E.	W.
N 45-00-00 W	59.00	.7071068	.7071068	41.71			41.71
N 45-00-00 E	77.00	.7071068	.7071068	54.44		54.44	
S 43-58-00 E	60.75	.6942398	.7197438		43.72	42.17	
S 46-19-00 W	75.91	.7231681	.6906721		52.43		54.90
				96.15	96.15	96.61	96.61

