

VILLAGE STREET
 d.h. N.C.H.B. 64.39
 243.01 307.40
 d.h. N.C.H.B.

PETITIONER'S PLAN OF LAND IN
MEDWAY, MASS.
 (REGISTRY DISTRICT OF NORFOLK)
 SCALES: AS NOTED OCTOBER 24, 1959

Bowie Engineering Co.
 Plain Street
 Millis, Mass.

I Certify that this plan was made from an actual survey conducted on the ground on or between Oct. 20, 1959 & Oct. 23, 1959 in accordance with the Land Court Instructions of 1950.

Russell S. Bowie 10/27/59
 Russell S. Bowie



MEDWAY PLANNING BOARD
 Approval not required under the Subdivision Control Law.

Russell S. Bowie
Walter J. Murphy
John W. Scott
 Date: Oct 29, 1959

Ld. Ct. Case No. 11341

NARRAGANSETT ST.

MOHAWK ST.

LOT 3
 Ld. Ct. Case No. 14682

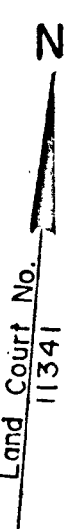
POPULATIC ST.

LOT 1
 Ld. Ct. Case No. 14682

MASSASOIT STREET

STREET

LOT 2
 Ld. Ct. Case No. 14682



KING PHILIP ST.

DETAIL PLAN
 SCALE: 1"=30'

NIPMUC ST.

LOCUS PLAN
 SCALE: 1"=60'

NOTE: SEE PLAN NO. 1056 A,B,C OF 1928 NORFOLK REGISTRY OF DEEDS

RIVER ROAD

WAMESIT ST.

IROQUOIS ST.

NOW OR FORMERLY MARY E. CRONIN

IROQUOIS (PUBLIC) STREET (3000)

LOT 1
 2671 S.F.

LOT 2
 2500 S.F.

LOT 3
 2500 S.F.

LOT 4
 2500 S.F.

LOT 5
 3045 S.F.

LOT 6
 2500 S.F.

LOT 7
 2500 S.F.

LOT 8
 2500 S.F.

LOT 9
 2500 S.F.

LOT 10
 2500 S.F.

NAUMKEAG (PUBLIC) STREET (3000)

LOT 11
 3531 S.F.

LOT 12
 2500 S.F.

LOT 13
 2500 S.F.

LOT 15
 2500 S.F.

LOT 16
 2500 S.F.

LOT 17
 2500 S.F.

MISHAWAM (PRIVATE) STREET (3000)

NOW OR FORMERLY FREETHEY

CHARLES RIVER ROAD (40.00) (PUBLIC)

