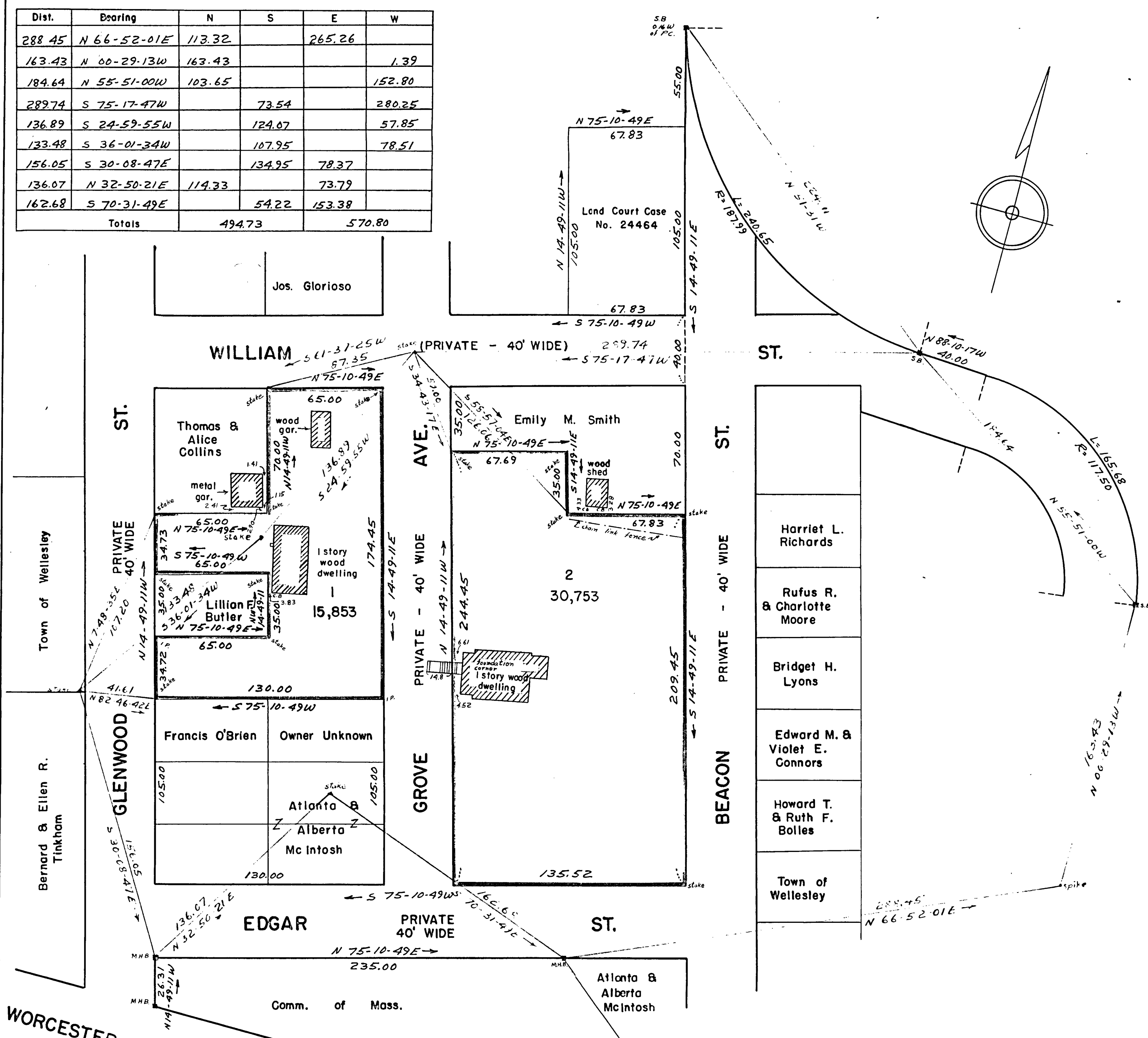


TRAVERSE CLOSURE

Dist.	Bearing	N	S	E	W
288.45	N 66-52-01E	113.32		265.26	
163.43	N 00-29-13W	163.43			1.39
184.64	N 55-51-00W	103.65			152.80
289.74	S 75-17-47W		73.54		280.25
136.89	S 24-59-55W		124.07		57.85
133.48	S 36-01-34W		107.95		78.51
156.05	S 30-08-47E		134.95	78.37	
136.07	N 32-50-21E	114.33		73.79	
162.68	S 70-31-49E		54.22	153.38	
Totals		494.73		570.80	



WORCESTER (STATE HIGHWAY) (VARIABLE WIDTH) ST.

I certify that this actual survey was made on the ground in accordance with the Land Court Instructions of 1950 between Oct. 18 and Nov. 15, 1958. Conditions on the ground were found to be the same on Nov. 18, 1959.

Date Nov. 18, 1959
John J. Regan
 25 Aberdeen St. Newton Highlands

WELLESLEY PLANNING BOARD
 Approval under the subdivision control law not required.
 Date November 23, 1959
Edward G. Meade
Ray D. Brown
Robert A. Wells

PLAN OF LAND
 IN
 WELLESLEY MASS.

SCALE 1 IN = 40 FT
 JOHN J. REGAN
 SURVEYOR
 NEWTON HIGHLANDS MASS.

NOV. 18, 1959
 SURVEYOR
 MASS.