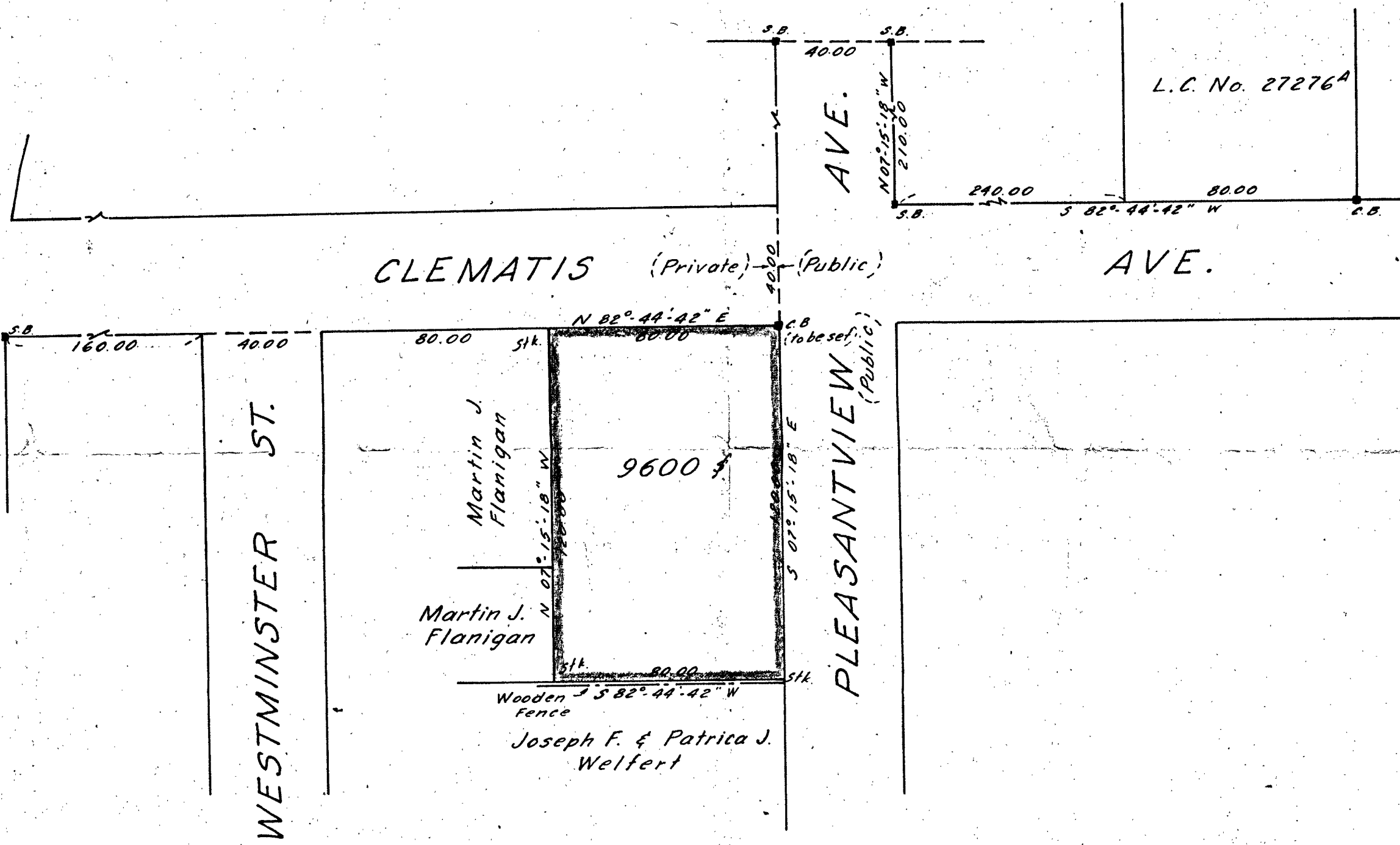
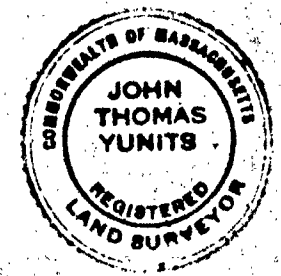




IDLEWELL BLVD.



PLAN OF LAND
 IDLEWELL BLVD. WEYMOUTH.
 NORFOLK COUNTY
 SCALE 1" = 40' OCTOBER, 1959
 YUNITS ENGINEERING COMPANY
 37 UNION ST. HOLBROOK, MASS.



I certify that this actual survey was made on the ground in accordance with the Land Court Instructions of 1950.

John T. Yunits
 John T. Yunits, Registered Land Surveyor