

PLAN OF LAND  
RANDOLPH MASS.

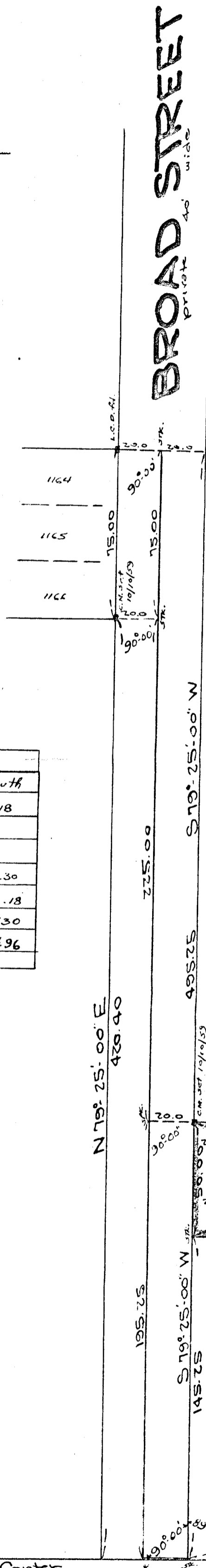
SCALE 1"=40' OCT. 9, 1959

L. W. DECELLE SURVEYORS INC.

285 UNION ST. RANDOLPH



*Handwritten notes:*  
 1164  
 1165  
 1166  
 1167  
 1168  
 1169  
 1170  
 1171  
 1172  
 1173  
 1174  
 1175  
 1176  
 1177  
 1178  
 1179  
 1180  
 1181  
 1182  
 1183  
 1184  
 1185  
 1186  
 1187  
 1188  
 1189  
 1190  
 1191  
 1192  
 1193  
 1194  
 1195  
 1196  
 1197  
 1198  
 1199  
 1200

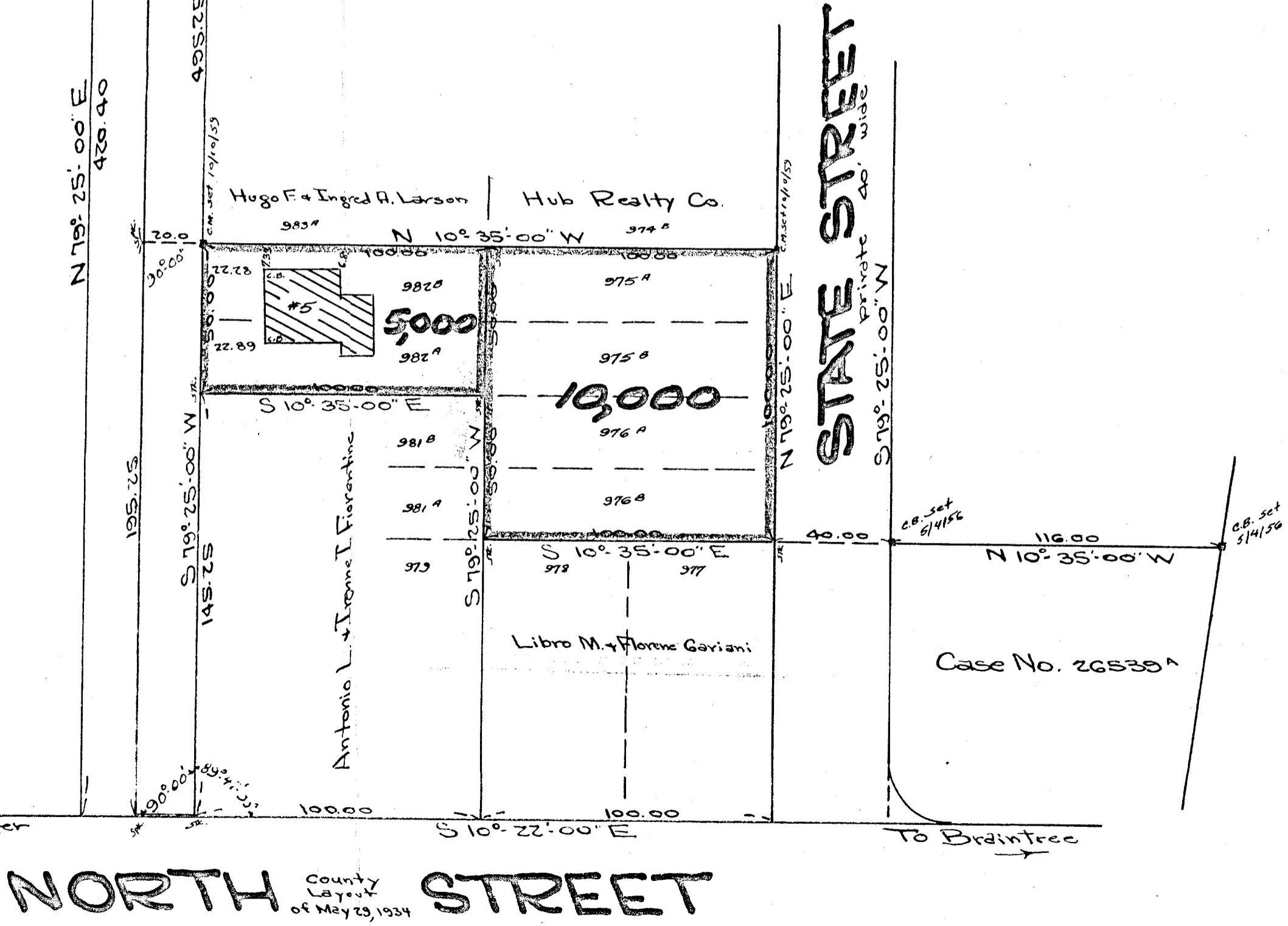


"TRAVERSE"

| Bearing     | Length | East   | West   | North  | South  |
|-------------|--------|--------|--------|--------|--------|
| S 73° 25' W | 50.00  |        | 49.15  |        | 9.18   |
| N 10° 35' W | 200.00 |        | 36.73  | 196.40 |        |
| N 73° 25' E | 100.00 | 98.30  |        | 18.37  |        |
| S 10° 35' E | 100.00 | 18.37  |        |        | 98.30  |
| S 73° 25' W | 50.00  |        | 49.15  |        | 9.18   |
| S 10° 35' E | 100.00 | 18.37  |        |        | 98.30  |
|             |        | 135.04 | 135.03 | 214.97 | 214.96 |

I certify that this actual survey was made on the ground in accordance with the Land Court Instructions of 1958 on or between Oct. 5-7, 1959

Date: Oct. 9, 1959  
 Charles W. DeCelle



Case No. 26538A