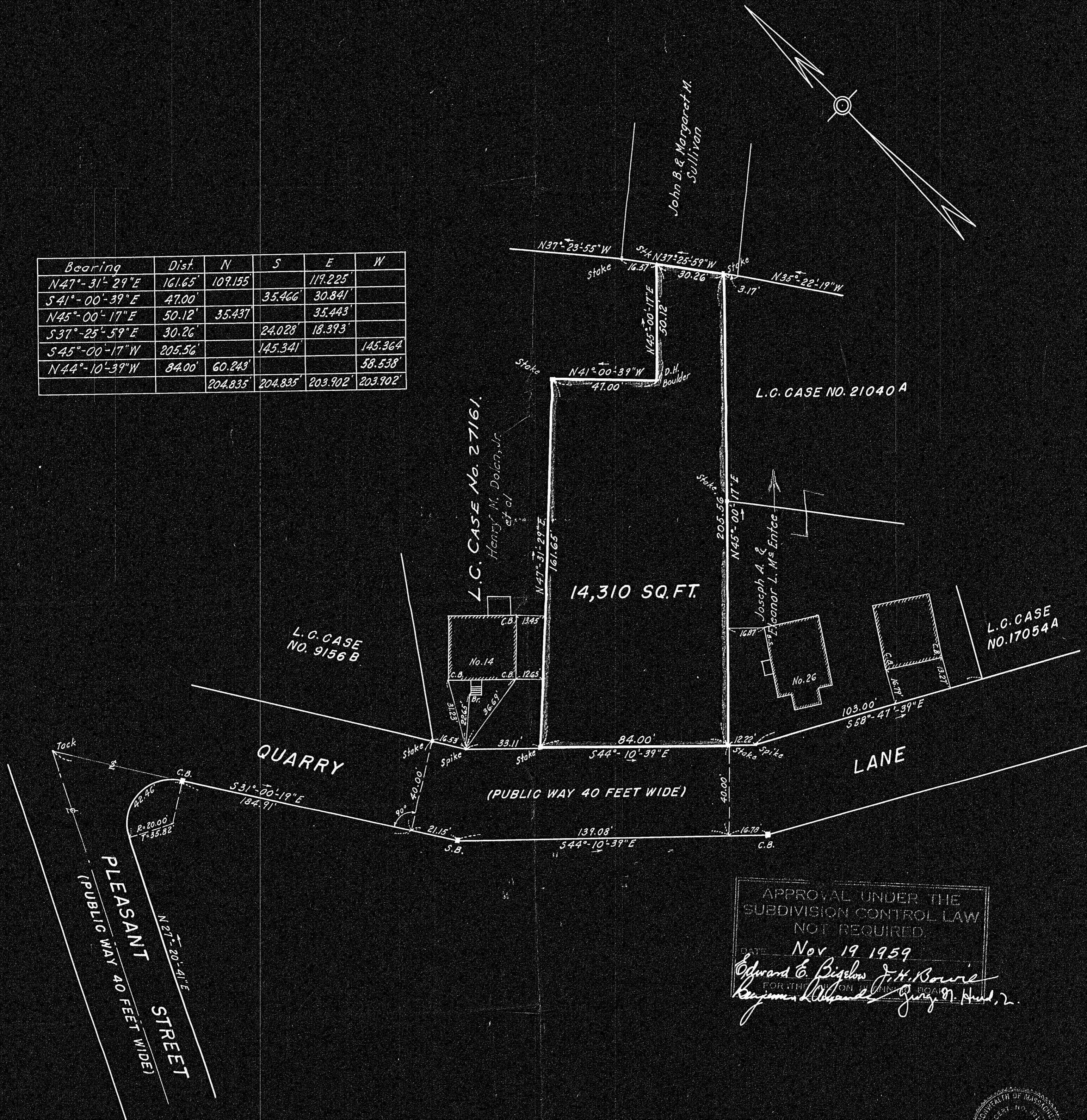
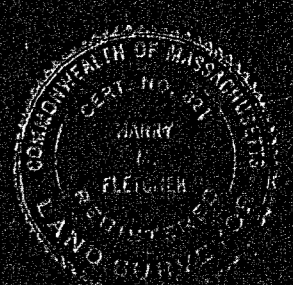


Bearing	Dist.	N	S	E	W
N47°-31'-29"E	161.65'	109.155		119.225'	
S41°-00'-39"E	47.00'		35.466	30.841'	
N45°-00'-17"E	50.12'	35.437		35.443'	
S37°-25'-59"E	30.26'		24.028	18.393'	
S45°-00'-17"W	205.56'		145.341		145.364
N44°-10'-39"W	84.00'	60.243			58.538'
		204.835	204.835	203.902	203.902



APPROVAL UNDER THE
SUBDIVISION CONTROL LAW
NOT REQUIRED.
DATE **Nov 19 1959**
Edward C. Bigelow *J.H. Bourie*
FOR THE COMMISSIONER OF REVENUE
Benjamin W. Alford *George W. Hunt, Jr.*



I certify that this actual survey was made
on the ground in accordance with Land
Court Instructions of 1950, on Oct. 24, 1959.
Harry M. Fletcher

29557
11-20-59 R.C.C.
Milton Pl. 21D

PLAN OF LAND
MILTON, MASS.
SCALE 1IN. = 30 FT. OCT. 24, 1959
H.M. FLETCHER, SURVEYOR
95 MILTON AVE., HYDE PARK