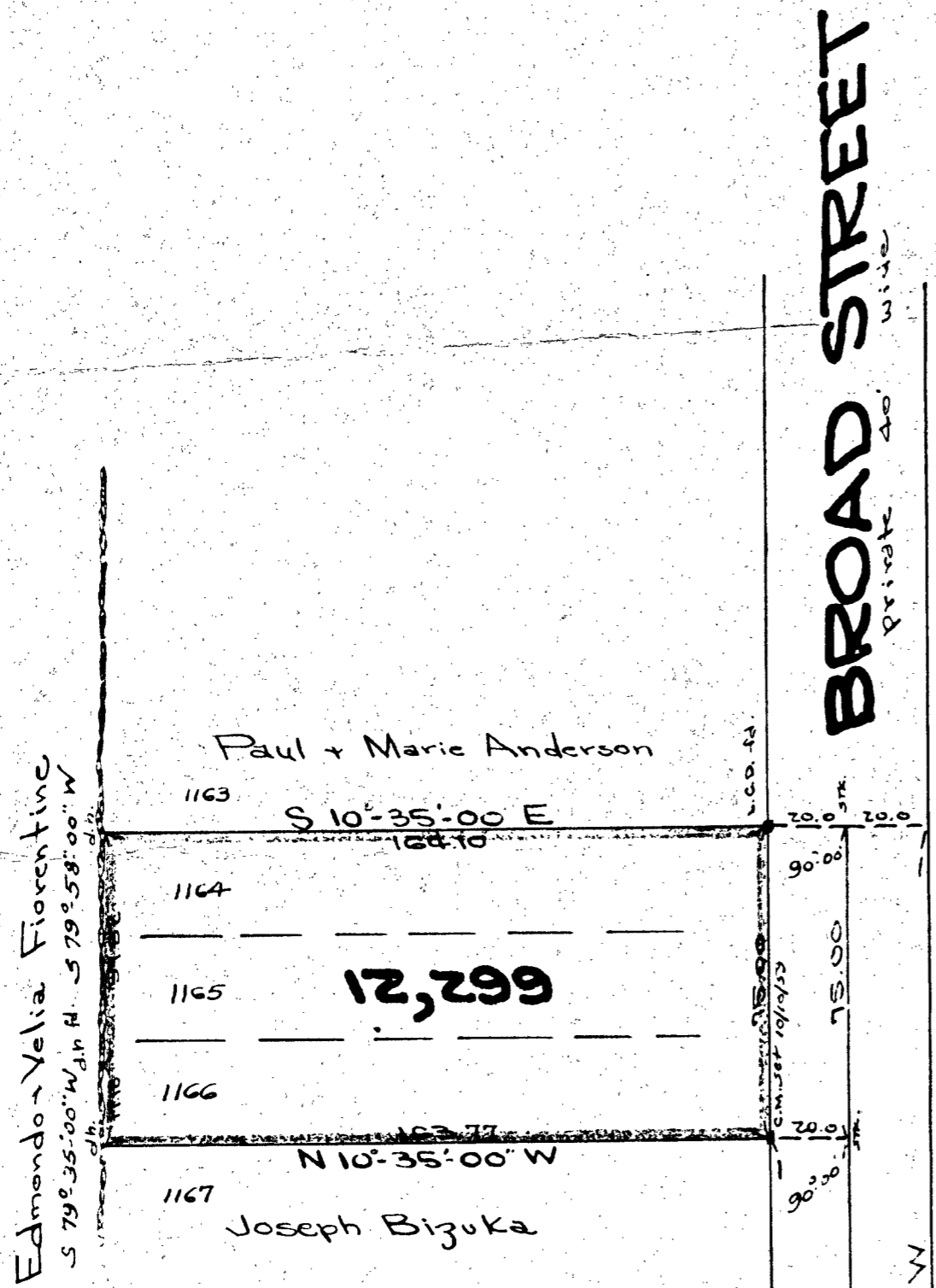
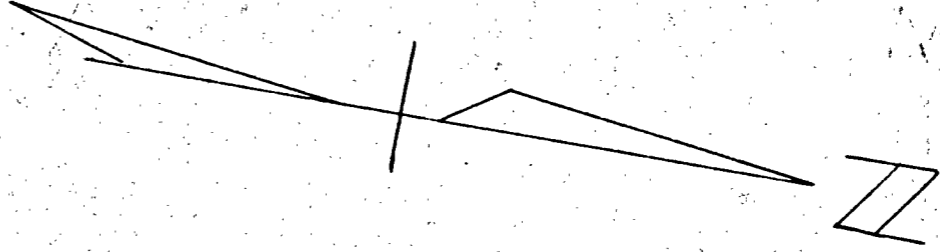


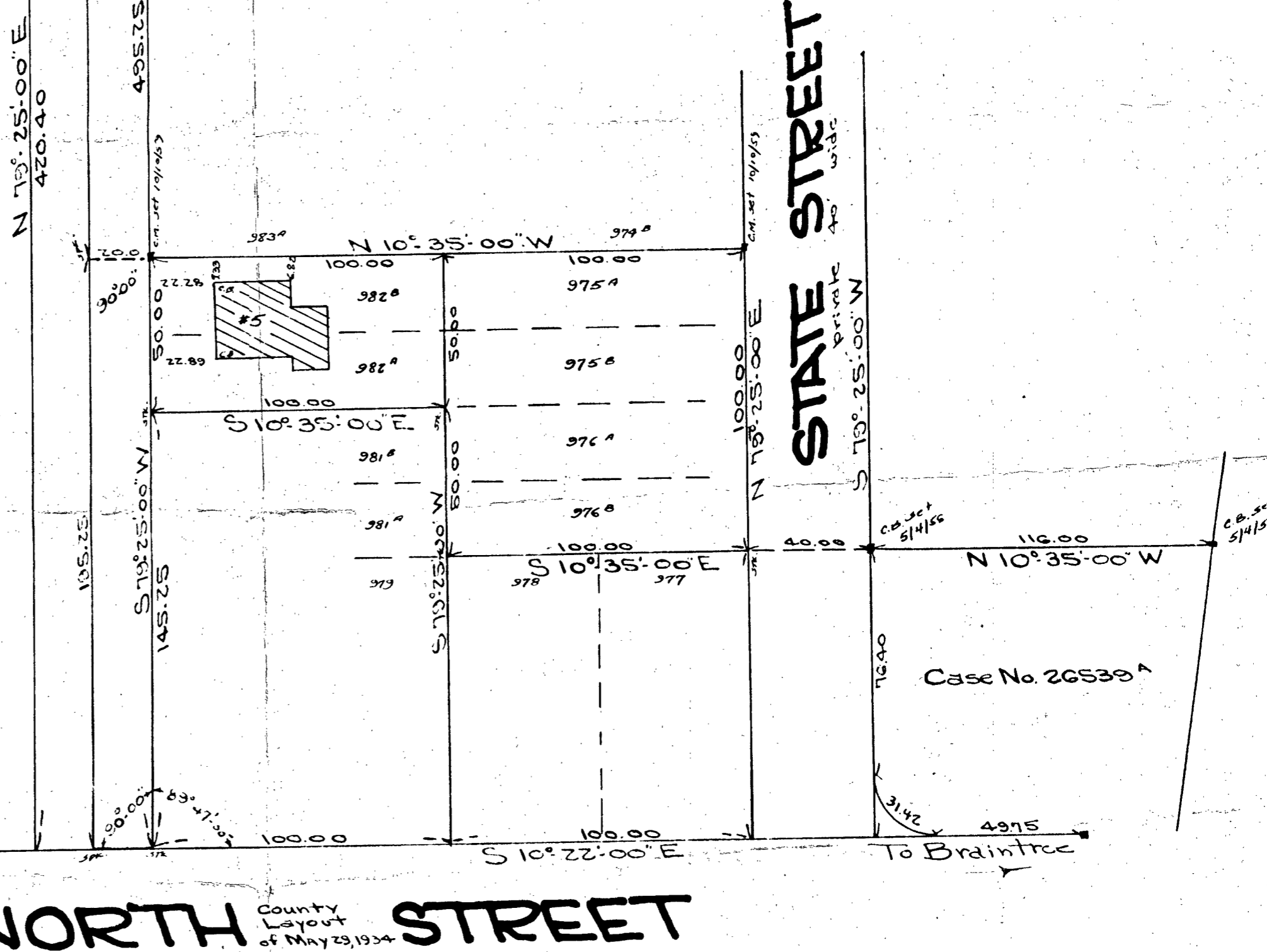
PLAN OF LAND  
**RANDOLPH, MASS.**  
 SCALE 1"=40' OCT. 9, 1959  
 L.W. DECELLE SURVEYORS INC.  
 285 UNION ST. RANDOLPH



I certify that this actual survey was made  
 on the ground in accordance with the  
 Land Court Instructions of 1958 on or between  
 Oct. 5-7, 1959  
 Date: Oct 9-59  
 Charles W. Lehto

"TRAVERSE"

BEARING	LENGTH	EAST	WEST	NORTH	SOUTH
N 79° 25' E	75.00	73.72		13.77	
S 10° 35' E	164.10	30.14			161.31
S 79° 53' W	57.92		16.92		2.99
S 79° 35' W	17.18		56.87		10.45
N 10° 35' W	163.77		30.08	160.98	
		103.86	103.87	174.75	174.75



**NORTH STREET**  
 County Layout of May 29, 1934