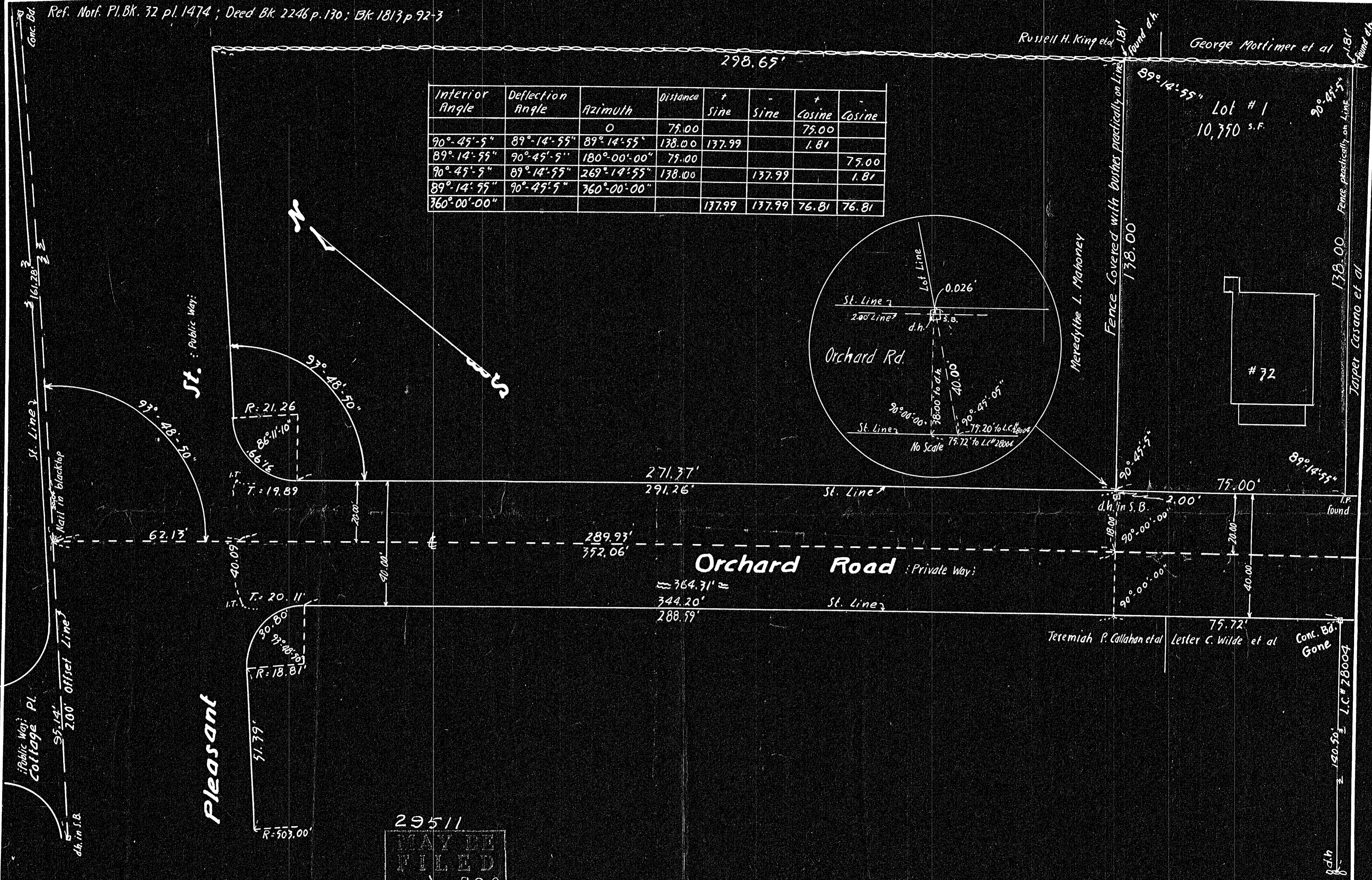
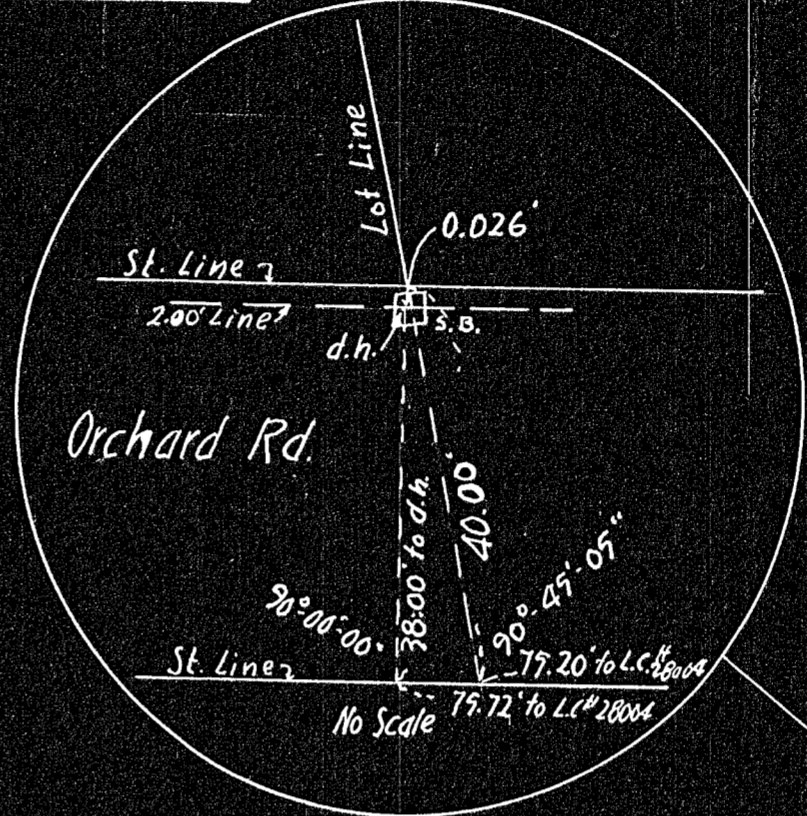


Interior Angle	Deflection Angle	Azimuth	Distance	+ Sine	- Sine	+ Cosine	- Cosine
		0	75.00			75.00	
90°-45'-5"	89°-14'-55"	89°-14'-55"	138.00	137.99		1.81	
89°-14'-55"	90°-45'-5"	180°-00'-00"	75.00				75.00
90°-45'-5"	89°-14'-55"	269°-14'-55"	138.00		137.99		1.81
89°-14'-55"	90°-45'-5"	360°-00'-00"					
360°-00'-00"				177.99	177.99	76.81	76.81



29511
 MAY BE FILED
 10-28-59 R.C.C.
 Date By
 Milton Pl. 21A

APPROVAL UNDER THE
 SUBDIVISION CONTROL LAW
 NOT REQUIRED.
 DATE October 22 1959
 S. Albert Kaufmann
 REGISTERED LAND SURVEYOR
 FOR THE MILTON PLANNING BOARD



Plan of Land
 Situated in
Milton, Massachusetts.
 Scale of 20' to an inch 30 Sept. 1959
 S. Albert Kaufmann, R.L.S. 6 Pleasant St., Malden.

I Certify that this actual survey was made on the ground in accordance with Land Court Instructions of 1950 between Sept. 25 & 30, 1959 30 Sept. 1959.
 S. Albert Kaufmann
 Surveyor