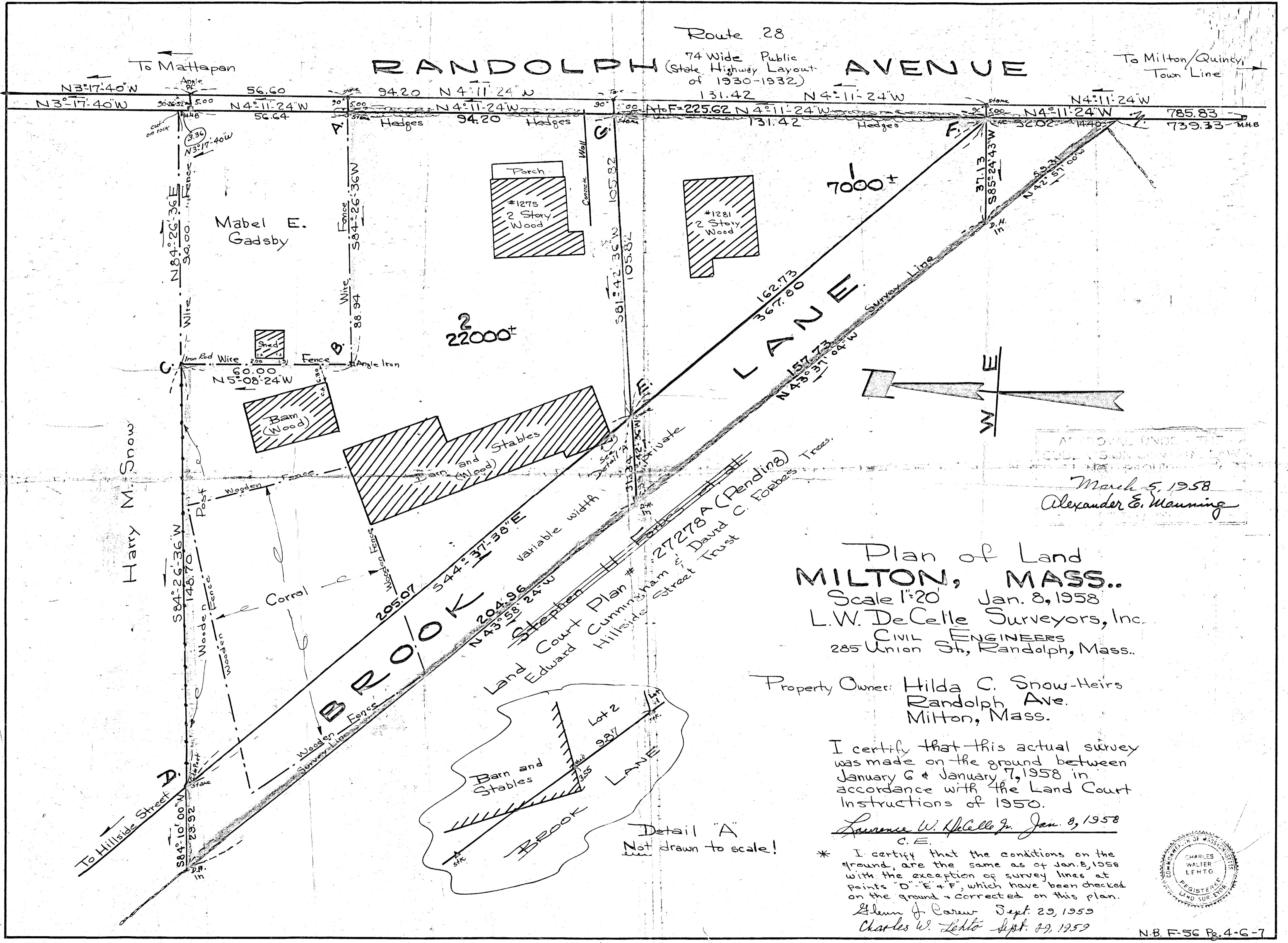


Route 28
74 Wide Public
State Highway Layout
of 1930-1932

RANDOLPH AVENUE

To Milton/Quincy
Town Line



APPROVAL UNDER THE
CIVIL ENGINEERING LAW,
STATE OF MASSACHUSETTS

March 5, 1958
Alexander E. Manning

Plan of Land
MILTON, MASS.
Scale 1"=20' Jan. 8, 1958
L.W. DeCelle Surveyors, Inc.
CIVIL ENGINEERS
285 Union St., Randolph, Mass.

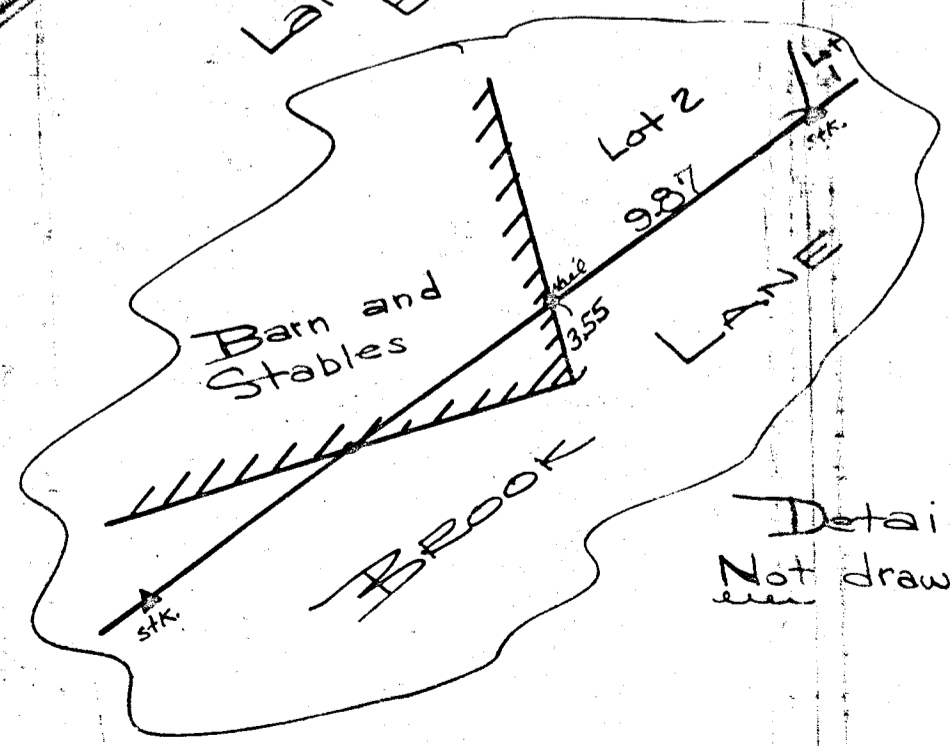
Property Owner: Hilda C. Snow-Heirs
Randolph Ave.
Milton, Mass.

I certify that this actual survey was made on the ground between January 6 & January 7, 1958 in accordance with the Land Court Instructions of 1950.

Lawrence W. DeCelle Jr. Jan. 8, 1958
C.E.

* I certify that the conditions on the ground, are the same as of Jan. 8, 1958 with the exception of survey lines at points "D"- "E" + "F", which have been checked on the ground + corrected on this plan.

Glenn J. Carver Sept. 29, 1959
Charles W. Letto Sept. 29, 1959



Detail "A"
Not drawn to scale!

Harry M. Snow

To Mattapan

To Milton/Quincy
Town Line