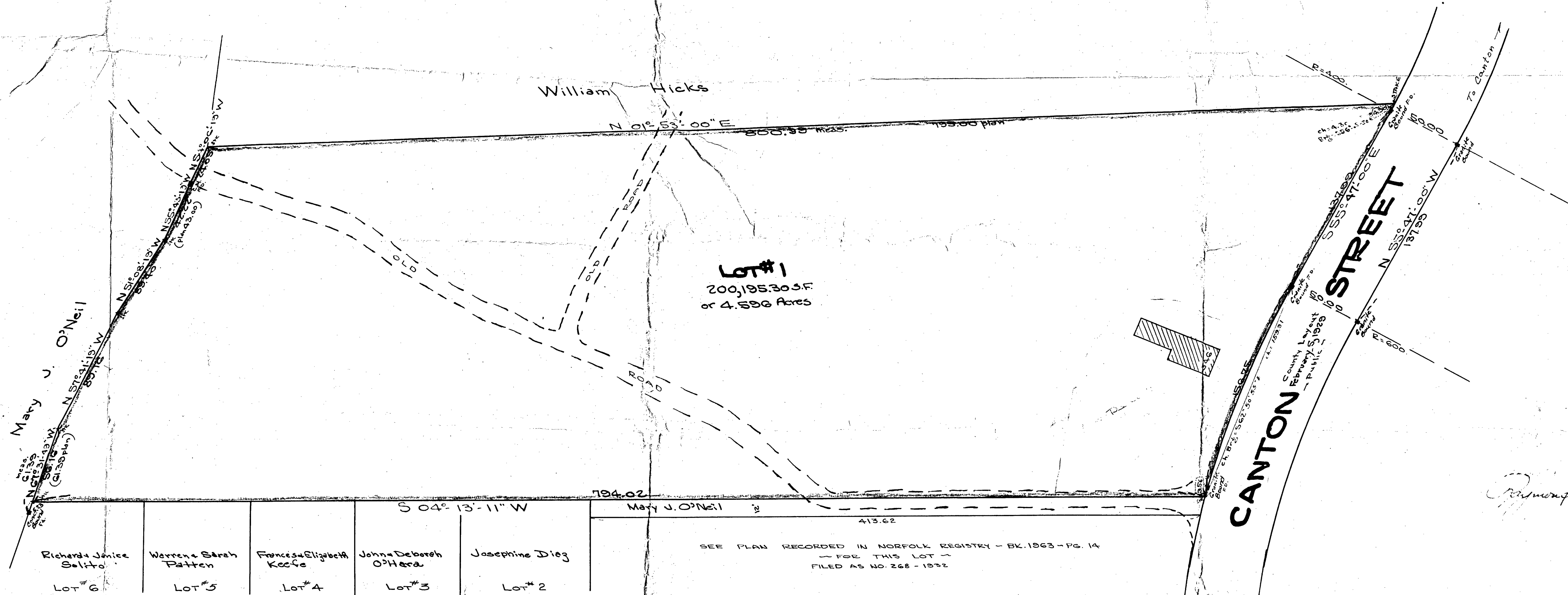
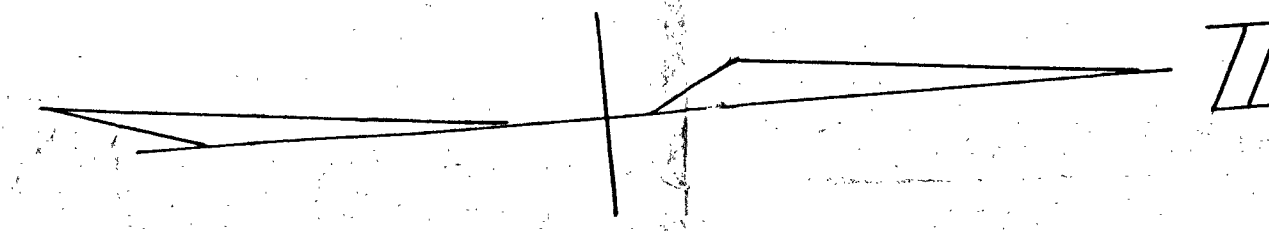
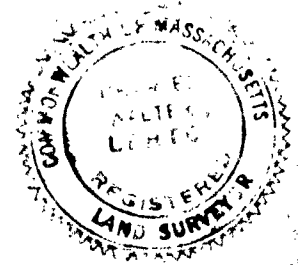


TRAVERSE					
Bearing	Distance	East	West	North	South
S 56° 45' 30" E	4.30	3.57			2.40
S 55° 41' 00" E	137.59	114.11			71.60
S 62° 50' 55" E	159.91	142.23			72.07
S 64° 13' 11" W	754.62		584.3		731.97
N 67° 31' 45" W	56.16		51.30	21.46	
N 57° 41' 19" W	80.16		75.35	47.66	
N 51° 08' 15" W	59.10		46.75	37.77	
N 55° 44' 15" W	47.24		34.85	23.73	
N 54° 06' 15" W	24.65		18.48	14.10	
N 61° 55' 00" E	800.88	723.32		800.56	
		286.29	286.30	944.84	944.84

PLAN OF LAND
RANDOLPH MASS.
 SCALE 1"=40' JUNE 25, 1959
 L.W. DeCelle Surveyors Inc.
 LAND SURVEYORS
 285 UNION ST. RANDOLPH

I CERTIFY THAT THIS ACTUAL SURVEY
 WAS MADE ON THE GROUND IN ACCORDANCE
 WITH THE LAND COURT INSTRUCTIONS OF
 1950 ON OR BETWEEN JUNE 15 TO JUNE 20, 1959.

June 25, 1959 Charles W. Letto



SEE PLAN RECORDED IN NORFOLK REGISTRY - BK. 1963 - PG. 14
 FOR THIS LOT -
 FILED AS NO. 268 - 1952

Raymond T. Hall

NOTE:
 REFERENCE PLAN RECORDED IN NORFOLK
 REGISTRY OF DEEDS - RECEIVED APRIL 16, 1946
 WITH DEED - FILED AS NO. 273, 1946 BK. 2592 -
 PG. 82. - PLAN BY - H.A. SHERMAN C.E. - 4-5-46.