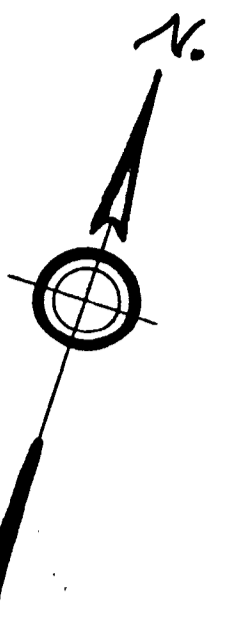


# PLAN OF LAND IN WEYMOUTH ~ MASS.

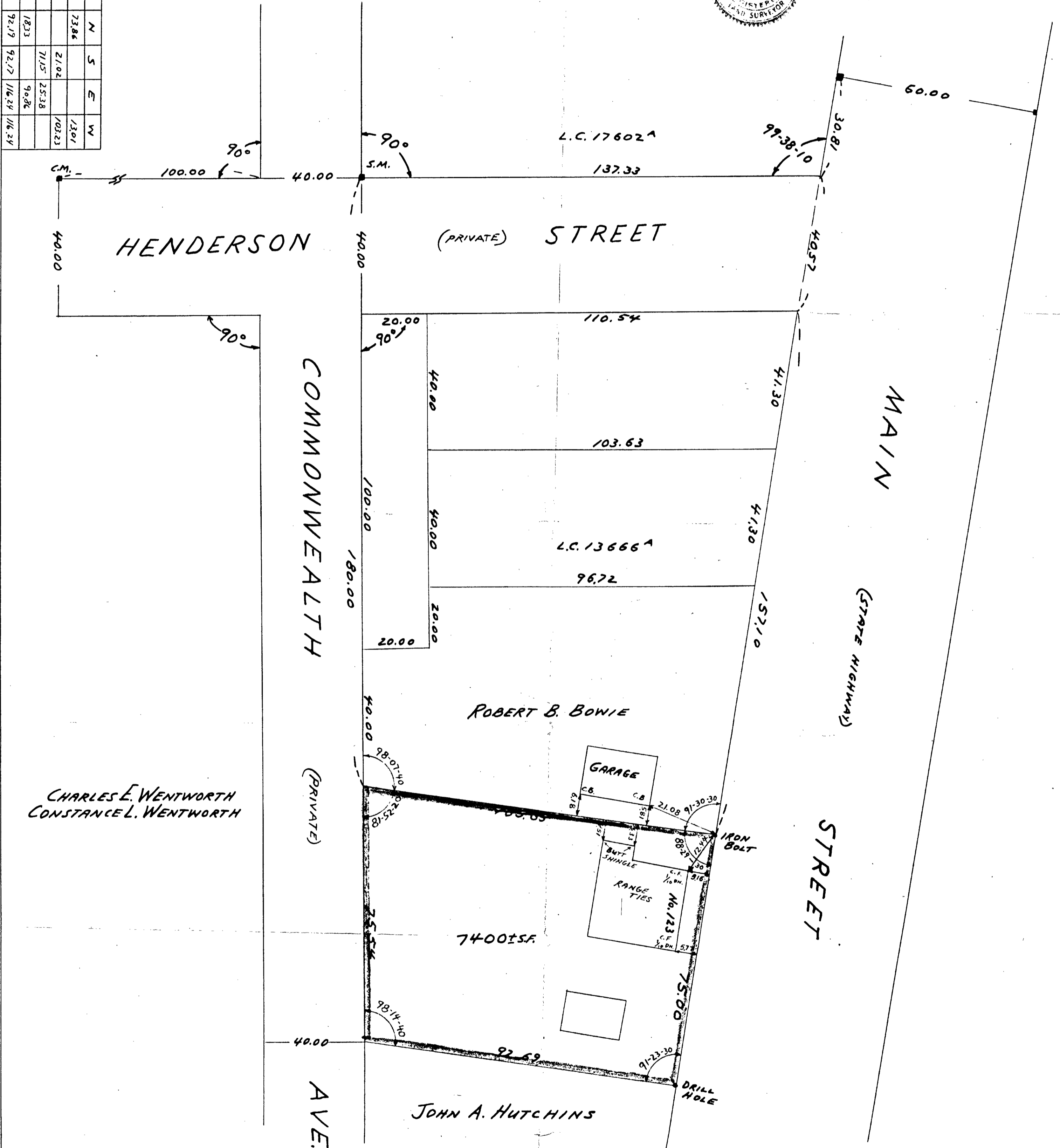
SCALE 1"=20'

OCT. 6, 1959

VICTOR F. COLETTI ~ SURVEYOR  
125 BUNKER HILL LANE, QUINCY, MASS.



Dist	Bearing	Sin	Cos	N	S	E	W
75.00	N10-00-00W	.1736482	.9848028	73.86			1301
105.35	S78-29-30W	.9798957	.1995105		21.02		103.23
75.54	S19-38-10E	.3360330	.9418460		71.15	25.38	
92.67	N78-56-30E	.9802999	.1772000	1833		90.86	
				92.19	92.17	116.24	116.24



CHARLES E. WENTWORTH  
CONSTANCE L. WENTWORTH

I CERTIFY THAT THIS ACTUAL SURVEY WAS  
MADE ON THE GROUND IN ACCORDANCE WITH  
LAND COURT INSTRUCTIONS OF 1950 ON OCT. 3, 1959.

Victor F. Coletti  
SURVEYOR