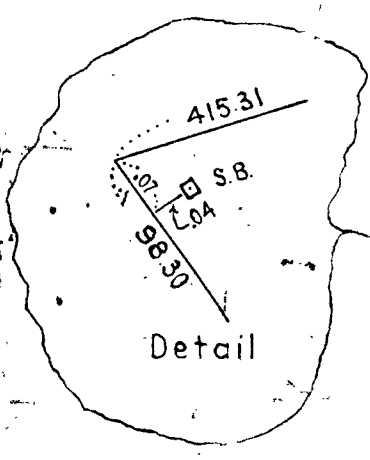


**Note**  
Bearings on these parcels are referred to the same meridian as Route No 1.

Edith S. Roberts  
L.C. Case No 17515  
Cert. No 20592



Area 1.03 Acres  
SHELL OIL CO.  
PIPE EINE

Area 2.88 Acres

**ROUTE No 1**  
(State Highway Layout of June 30, 1931)  
(Public)

29417 A  
9-16-57 WES

PINE (Public)  
S 59°-44'-00" E  
144.00  
146.25  
219.93

(County Relocation of Sept. 1911)  
STREET

TOTAL CURVE DATA  
Δ = 69°-00'-00"  
R = 164.00  
T = 161.44  
L = 255.03

I certify that conditions on the ground today are the same as when surveyed.  
*Kenneth E. McIntyre* June 25, 1959  
Date

I certify that this plan was made from an actual survey on the ground in accordance with the LAND COURT REQUIREMENTS OF 1950, on or between Jan. 1, 1952 and July 31, 1952

*Kenneth E. McIntyre*

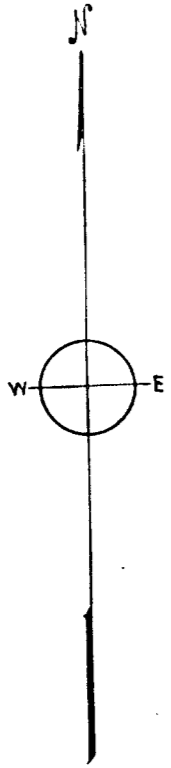
PLAN OF LAND  
IN  
WALPOLE, MASSACHUSETTS  
SCALE 1"=50' JULY 31, 1952  
Kenneth E. McIntyre - Walpole, Mass.  
Reg. Civil Engineer & Reg. Land Surveyor

TOWN OF WALPOLE  
PLANNING BD. APPROVAL  
APPROVAL NOT REQUIRED  
BO. OF APPEALS APPROVAL  
DATE August 18, 1959

*Leo J. Petrucci*  
*Thomas J. Kennedy*

TOWN OF WALPOLE  
 PLANNING Bd. APPROVAL  
 APPROVAL NOT REQUIRED  
 Bd. OF APPEALS APPROVAL  
 DATE August 18, 1959

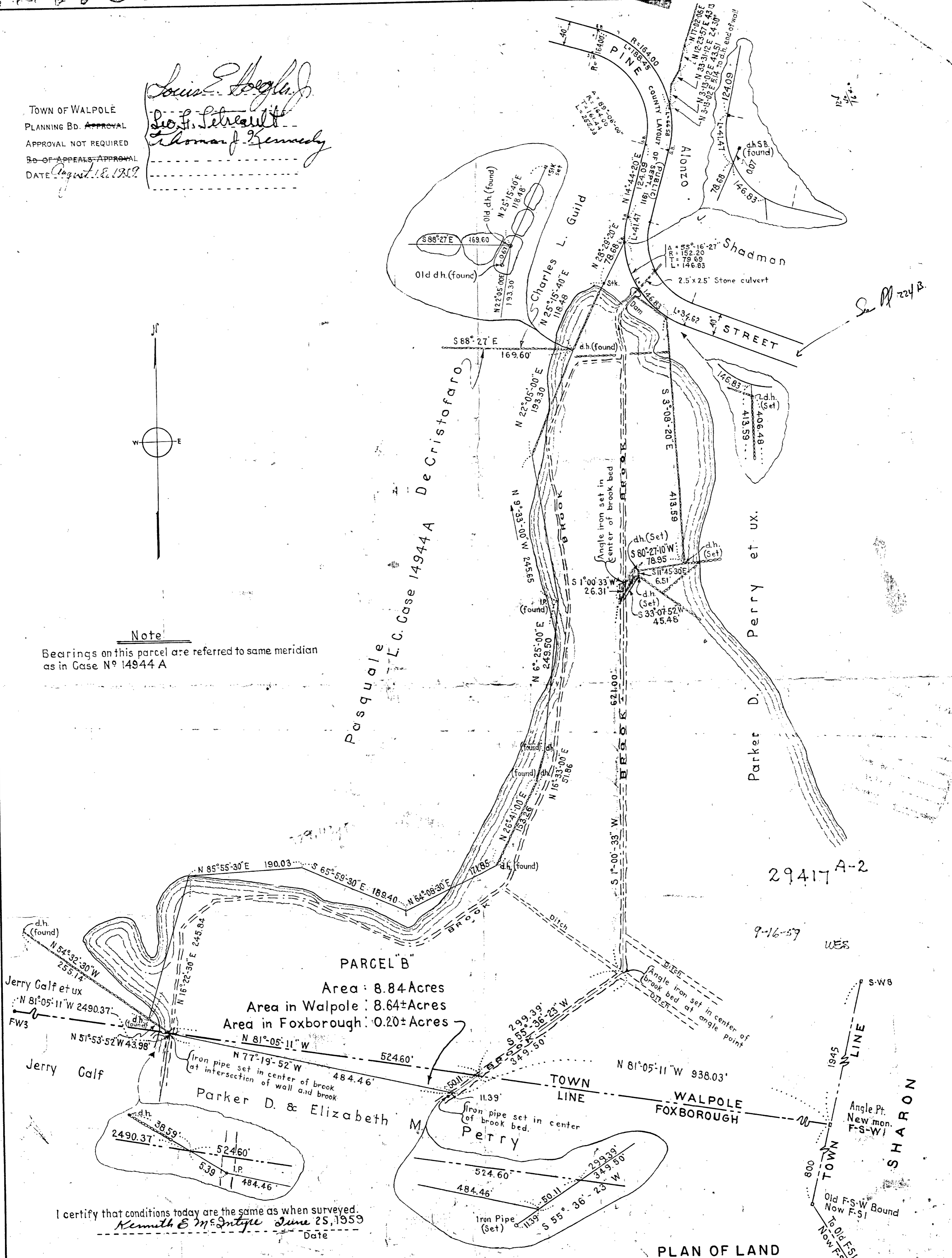
*Louis E. Foglia*  
*Leo J. Lebrault*  
*Thomas J. Kennedy*



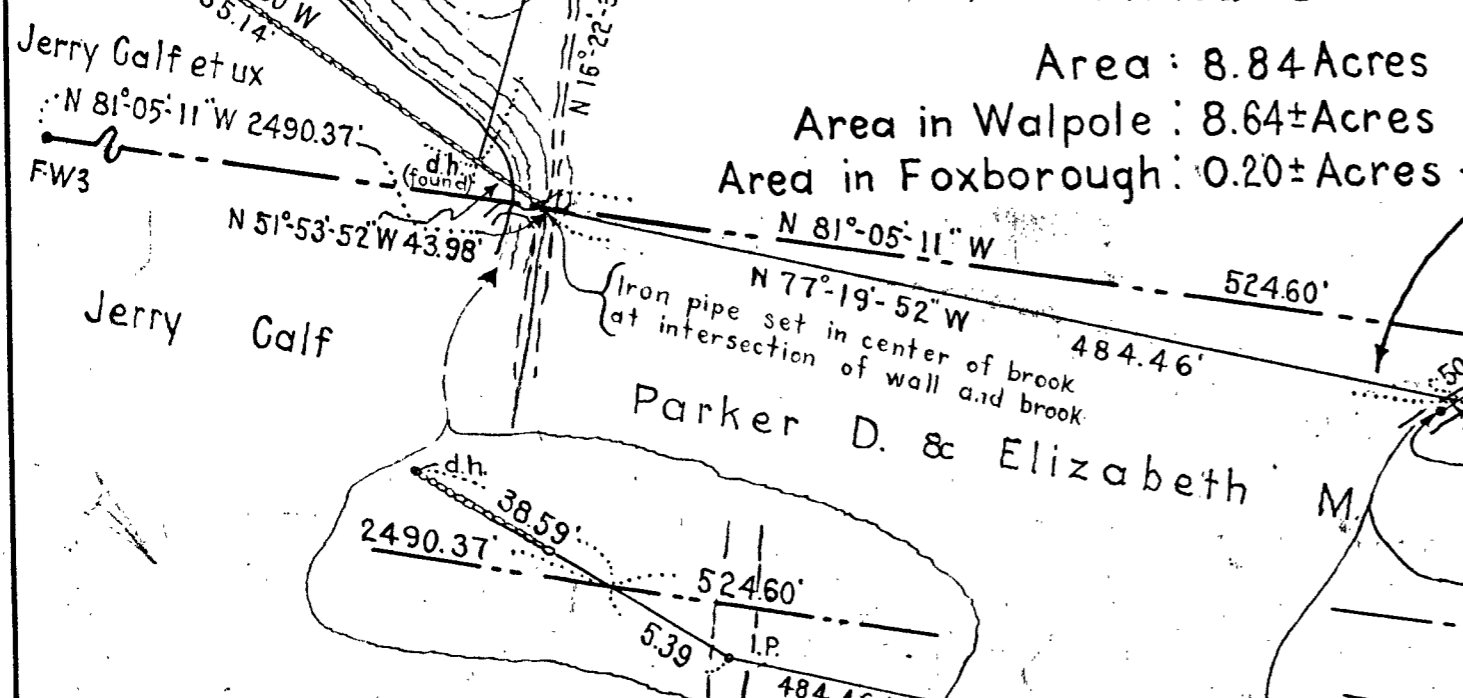
Note

Bearings on this parcel are referred to same meridian as in Case N<sup>o</sup> 14944 A

Pasquale L.C. Case 14944 A DeCristofaro



**PARCEL B**  
 Area : 8.84 Acres  
 Area in Walpole : 8.64± Acres  
 Area in Foxborough : 0.20± Acres



I certify that conditions today are the same as when surveyed.  
*Kenneth E. McIntyre* June 25, 1959  
 Date

I certify that this plan was made from an actual survey on the ground in accordance with the Land Court Requirements of 1950 on or between May 1, 1954 and October 25, 1954.  
*Kenneth E. McIntyre*

**PLAN OF LAND**  
 IN  
**WALPOLE, MASSACHUSETTS**  
 SCALE 1"=100' OCT. 25, 1954  
 Kenneth E. McIntyre, Walpole, Mass.  
 Reg. Civil Engineer & Reg. Land Surveyor

29417A