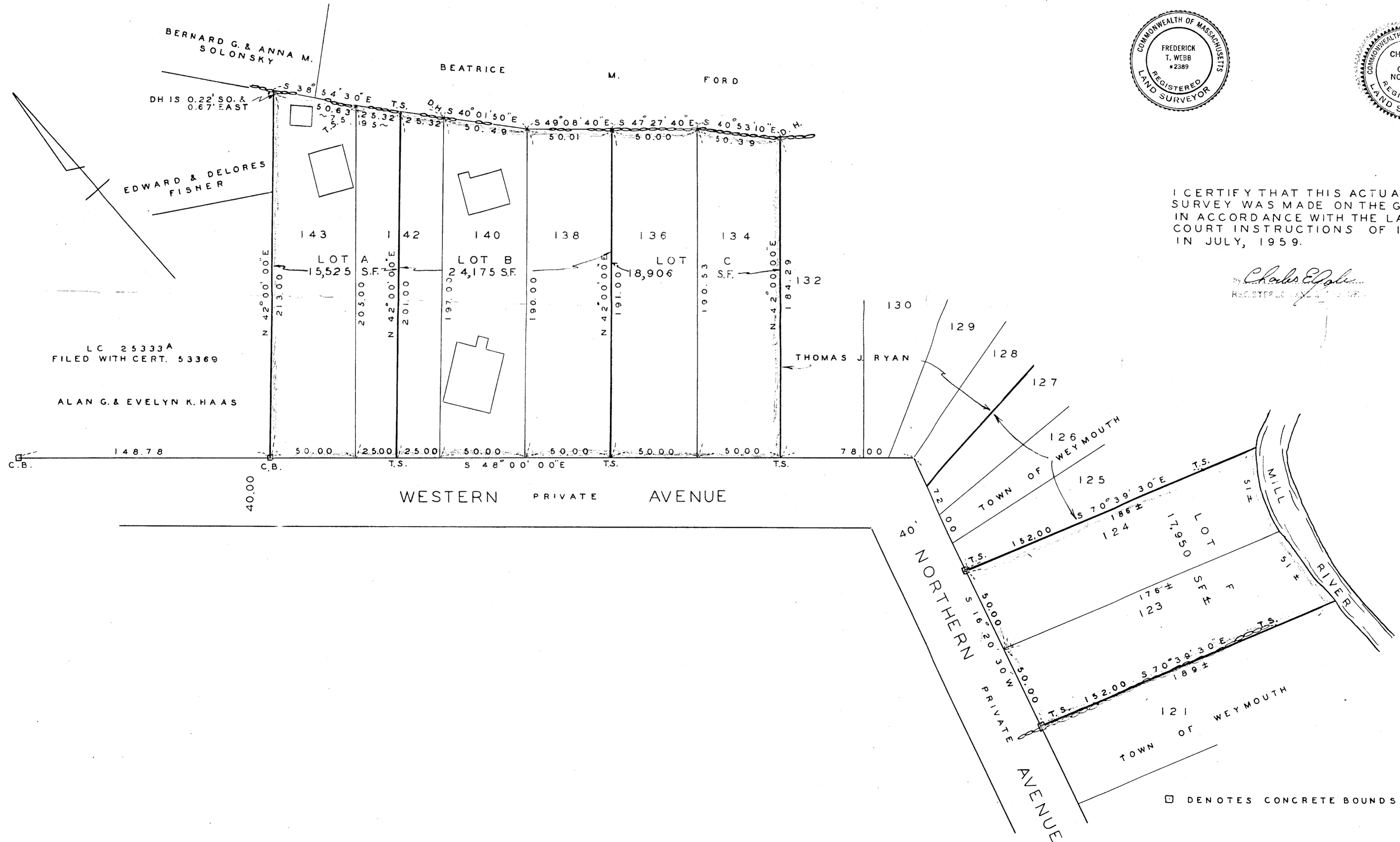
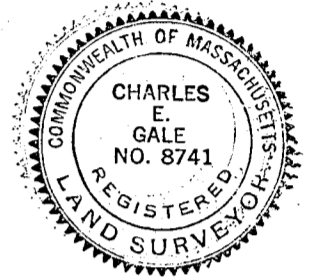
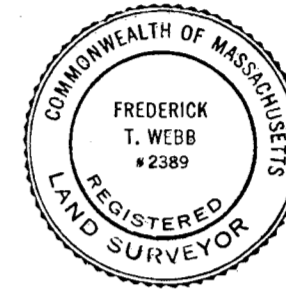


PLAN OF LAND IN  
**WEYMOUTH, NORFOLK CO. MASS.**  
 SCALE - 1" = 40'  
 JULY 16, 1959

THE SCHUYLER CLAPP COMPANY  
 BRAINTREE, MASS.



I CERTIFY THAT THIS ACTUAL SURVEY WAS MADE ON THE GROUND IN ACCORDANCE WITH THE LAND COURT INSTRUCTIONS OF 1950 IN JULY, 1959.

*Charles E. Gale*  
 REGISTERED LAND SURVEYOR

□ DENOTES CONCRETE BOUNDS TO BE SET.