

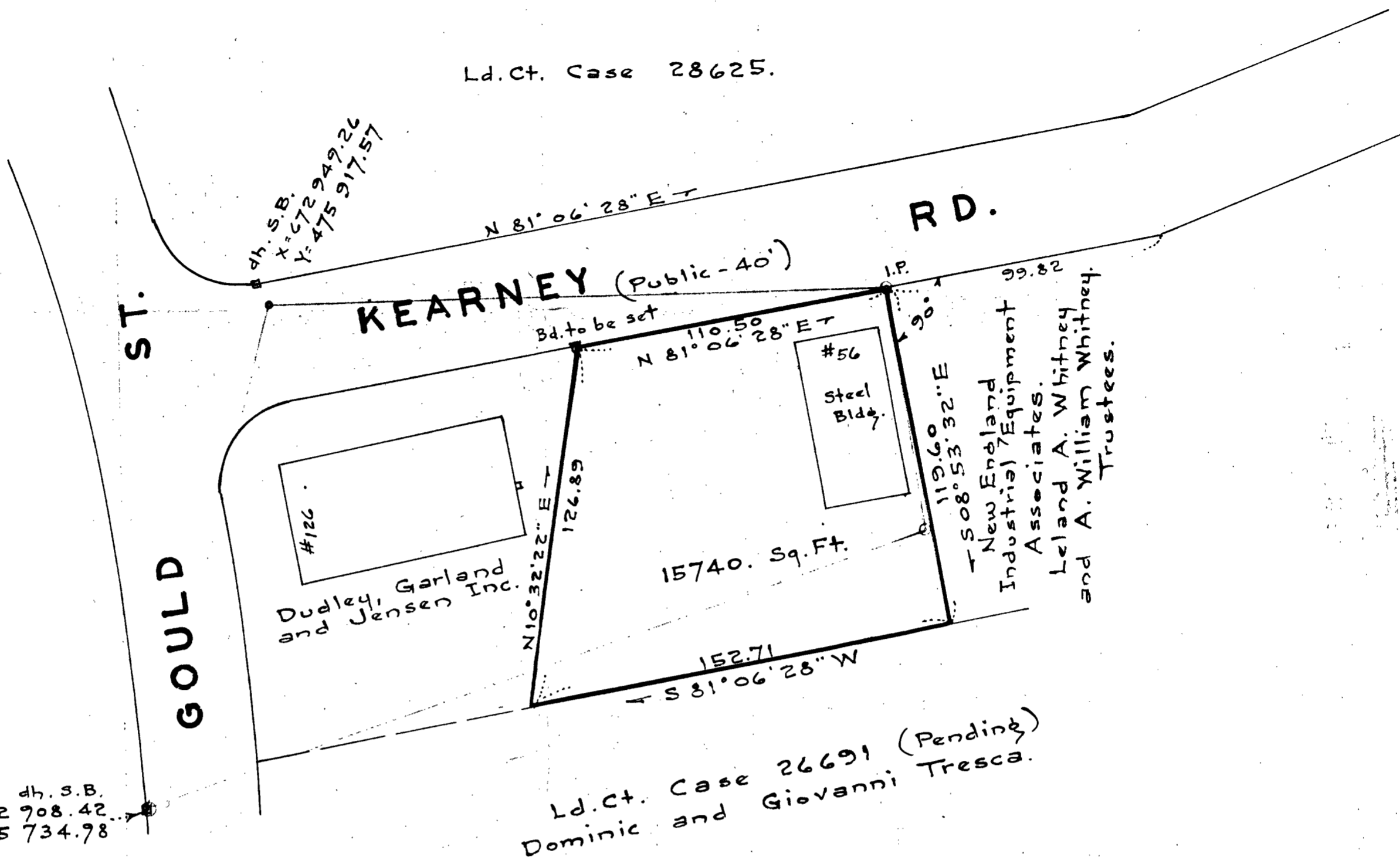
Ld. Ct. Case 28625.

Ld. Ct. Case 28782.

dh. S.B.  
 X=672 908.42  
 Y=475 734.98

Y=475 700.

X=672 900



Ld. Ct. Case 26691 (Pending)  
 Dominic and Giovanni Tresca.

Plan of Land in  
**NEEDHAM, MASS.**

Scale: 1 in. = 40 ft. Cheney Engineering Co.  
 Needham, Mass.

June 10, 1959.



I certify that this actual survey was made on the ground in accordance with the Land Court instructions of 1950.

Frank L. Cheney  
 Civil Engineer

Approval Under The Subdivision Control Law NOT Required:

Transit Traverse						X	Y	Point
Bearing	Dist.	N.	S.	E.	W.	672 908.42	475 734.98	S.B.
N 14° 34' 03" E	181.03	175.21		45.53		672 953.95	475 910.19	Spk.
N 89° 25' 33" E	219.28	2.20		219.27		673 173.22	475 912.39	I.P.
S 07° 43' 42" E	86.75		85.96	11.67		673 184.89	475 826.43	stk.
S 71° 41' 49" W	291.20		91.45		276.47	672 908.42	475 734.98	S.B.
		177.41	177.41	276.47	276.47			
Property Line						064.05	895.31	
N 81° 06' 28" E	110.50	17.08		109.17		173.22	912.39	
S 08° 53' 32" E	119.60		118.16	18.49		191.71	794.23	
S 81° 06' 28" W	152.71		23.67		150.87	040.84	770.56	
N 10° 32' 22" E	126.89	124.75		23.21		064.05	895.31	
		141.83	141.83	150.87	150.87			

Case No. 29281 Reg. Planning Board

Date: \_\_\_\_\_