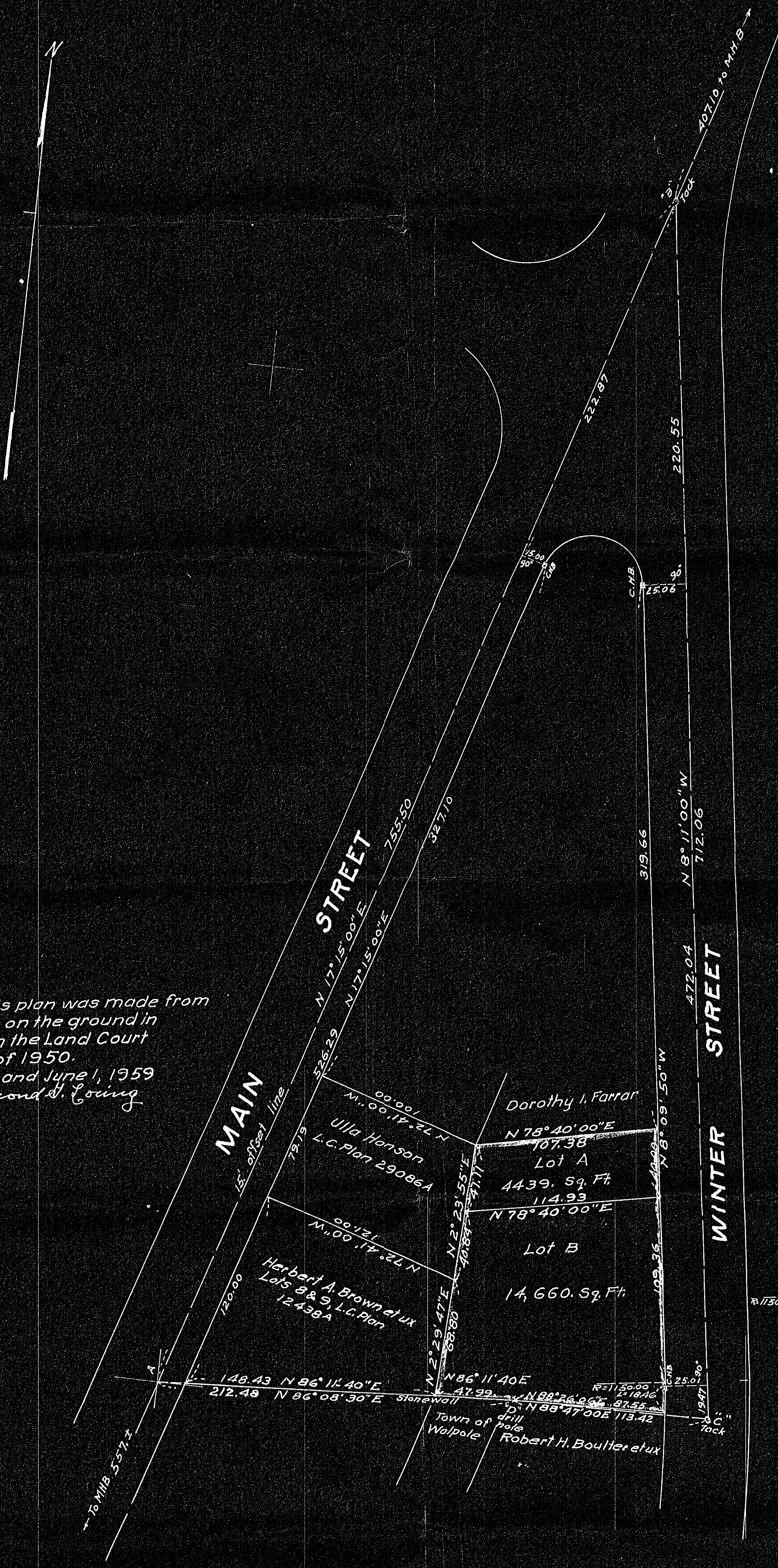


I certify that this plan was made from an actual survey on the ground in accordance with the Land Court Requirements of 1950.
 Between Jan. 2 and June 1, 1959
 Raymond G. Loring



TOWN PLANNING BOARD
 WALPOLE, MASS.
 APPROVAL UNDER SUBDIVISION
 CONTROL LAW NOT REQUIRED

John P. [Signature]
Walter [Signature]
 Harold M. Smith

June 8, 1959

13.02
 149.36
 0.21
 C.M.B.

PLAN OF LAND IN
 WALPOLE, MASS.
 SCALE: 1 INCH = 50 FEET
 RAYMOND G. LORING
 REG. LAND SURVEYOR
 JUNE 6, 1959