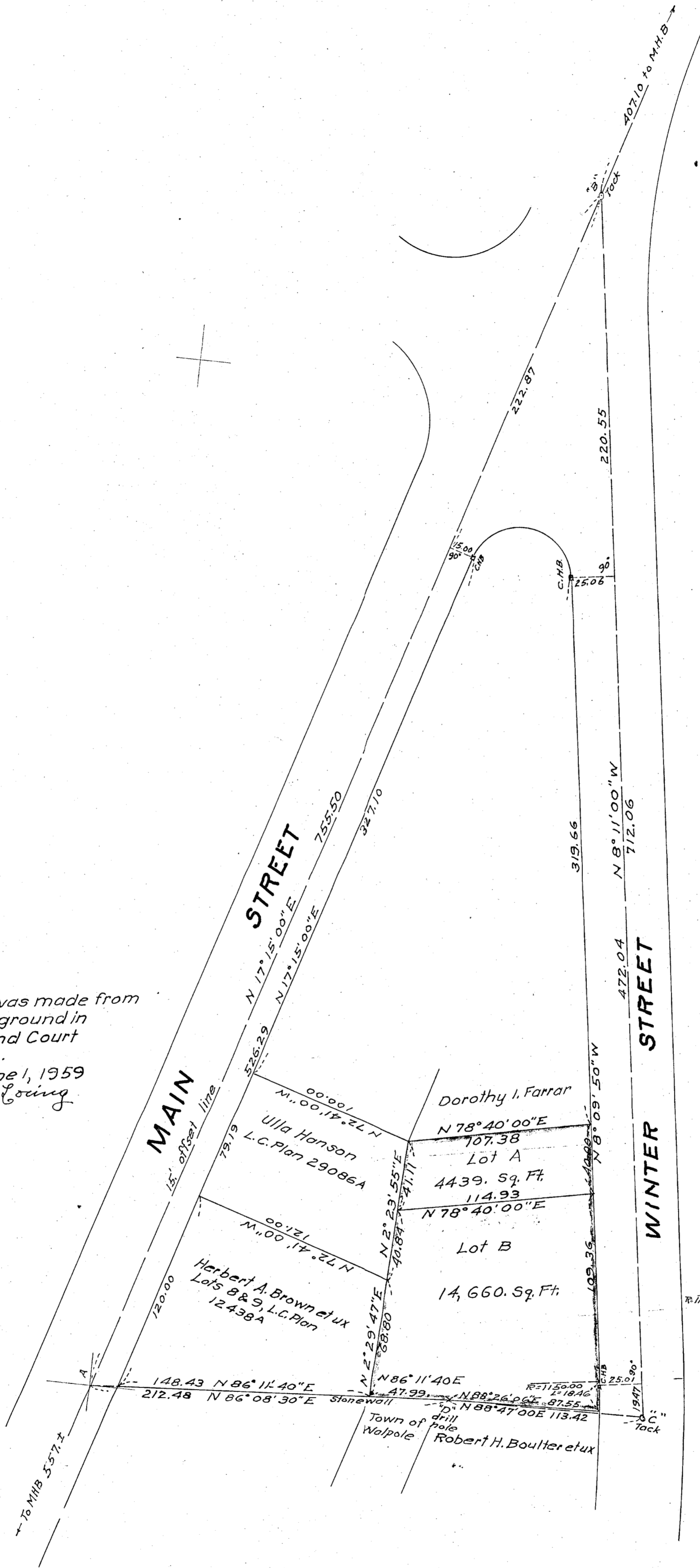


I certify that this plan was made from an actual survey on the ground in accordance with the Land Court Requirements of 1950. Between Jan. 2 and June 1, 1959  
*Raymond G. Loring*



TOWN PLANNING BOARD  
 WALPOLE, MASS.  
 APPROVAL UNDER SUBDIVISION  
 CONTROL LAW NOT REQUIRED

*Lucien P. ...*  
*Walter ...*  
*Harold M. Smith*

June 8, 1959

PLAN OF LAND IN  
 WALPOLE, MASS.  
 SCALE: 1 INCH = 50 FEET  
 RAYMOND G. LORING  
 REG. LAND SURVEYOR  
 JUNE 6, 1959