

Plan of Land
in
NORFOLK, MASS.

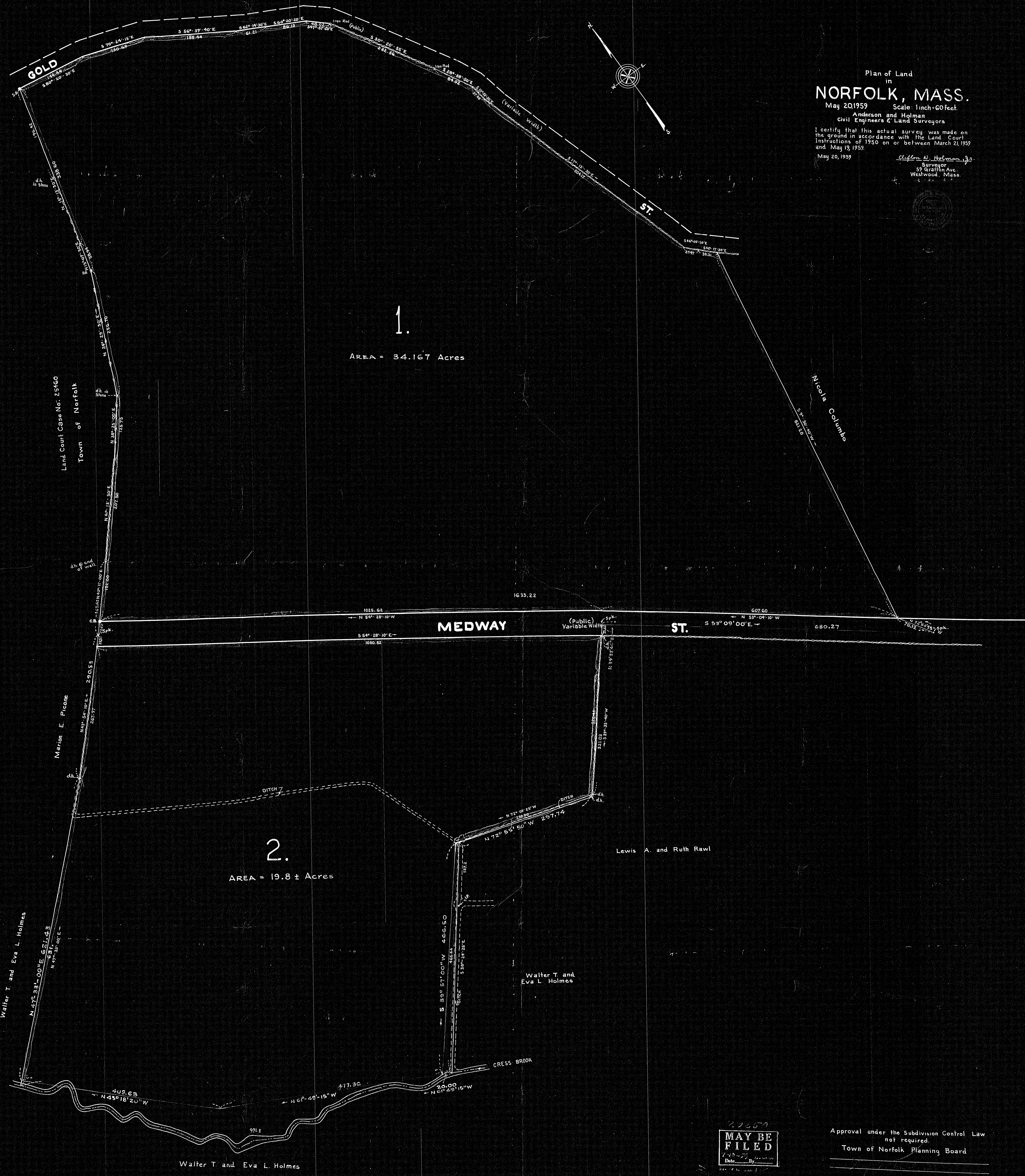
May 20, 1959 Scale: 1 inch = 60 feet.

Anderson and Holman
Civil Engineers & Land Surveyors

I certify that this actual survey was made on
the ground in accordance with the Land Court
instructions of 1950 on or between March 21, 1959
and May 19, 1959.

May 20, 1959

Clifton A. Holman, Jr.
Surveyor
59 Grafton Ave.
Westwood, Mass.



1.
AREA = 34.167 Acres

2.
AREA = 19.8 ± Acres

**MAY BE
FILED**

Approval under the Subdivision Control Law
not required.

Town of Norfolk Planning Board

Date: _____

JUL 1959