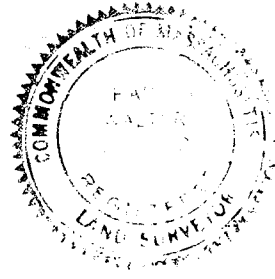


I certify that this plan was made in accordance with the Land Court Instructions of 1950.

Stanley J. Carver May 19, 1959



I certify that this actual survey was made on the ground in accordance with the Land Court Instructions of 1950 on MAY 18, 1959

Charles W. Letko May 19, 1959

PLAN OF LOT RANDOLPH, MASS.

SCALE: 1"=40' MAY 19, 1959

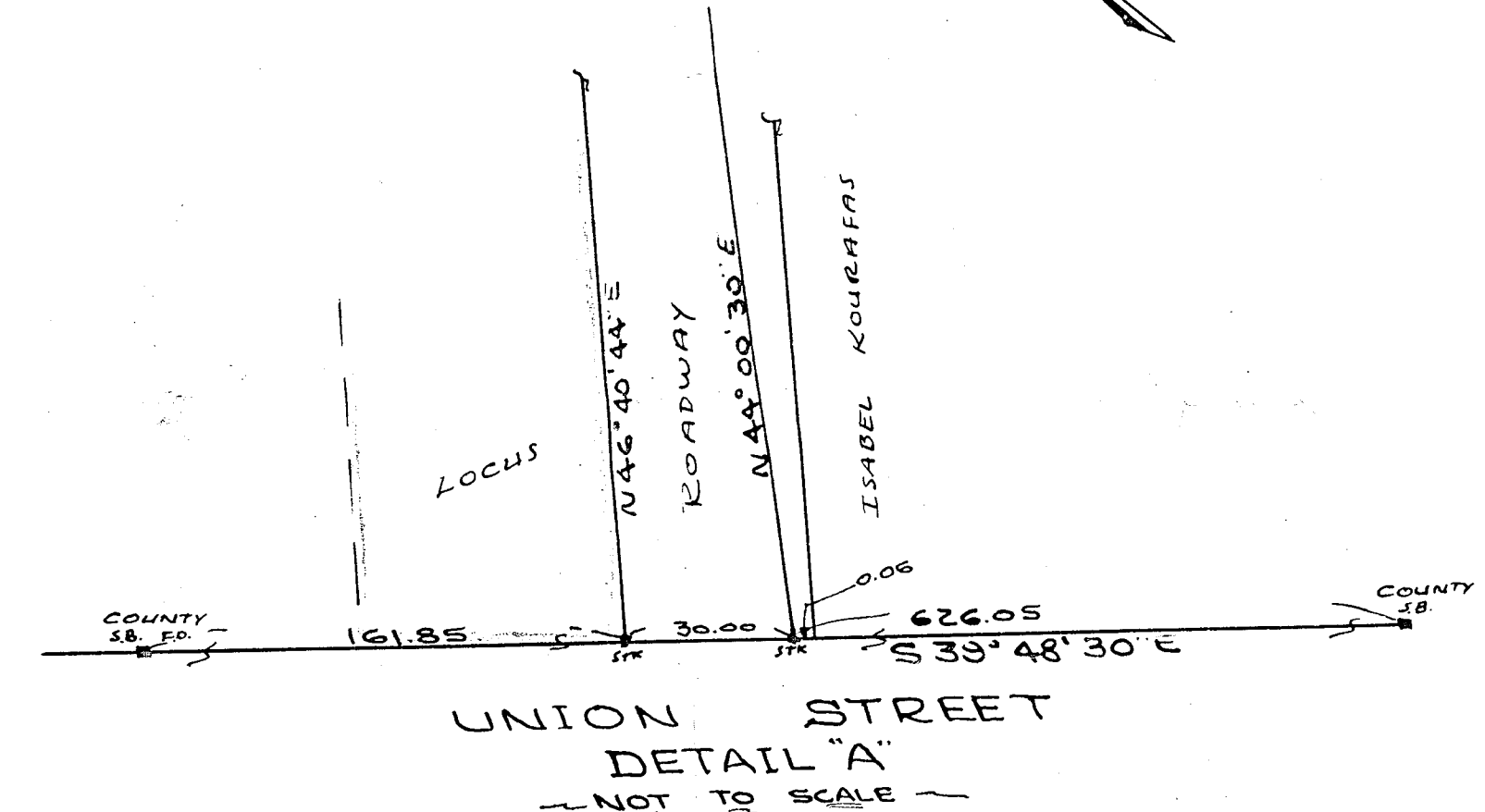
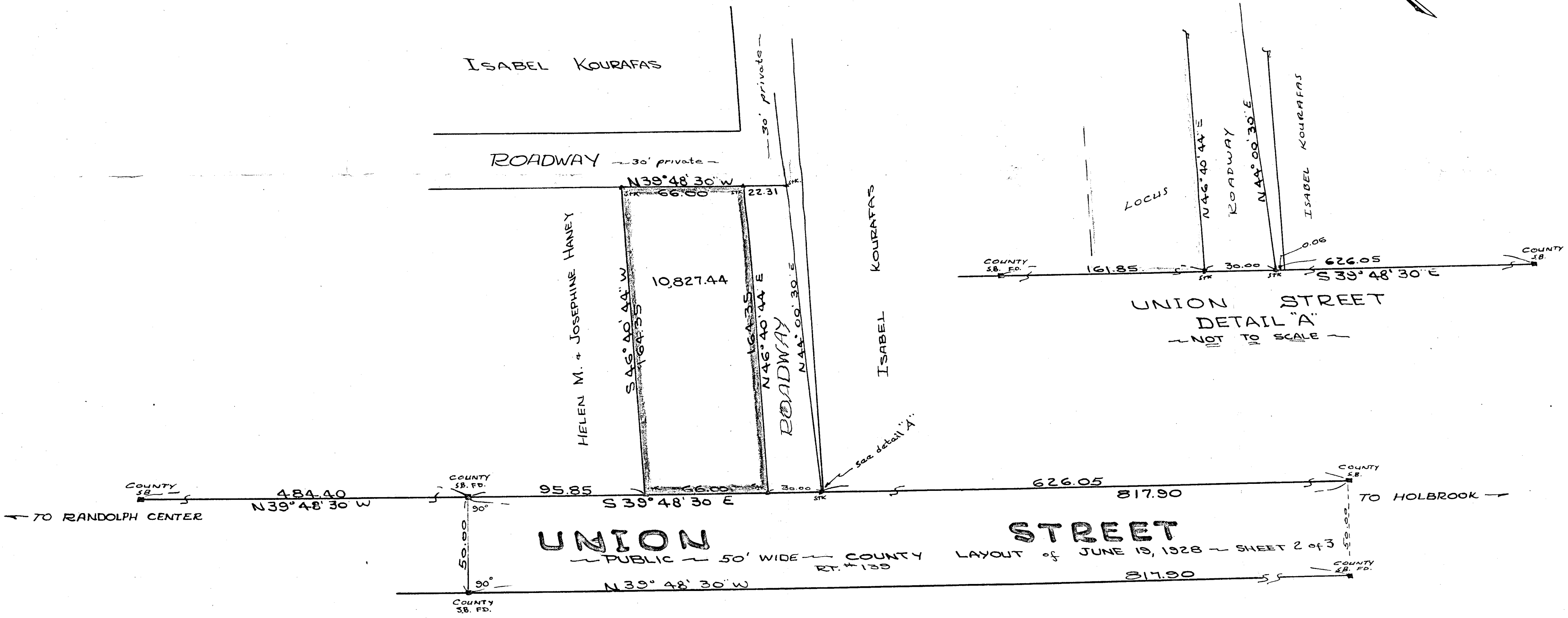
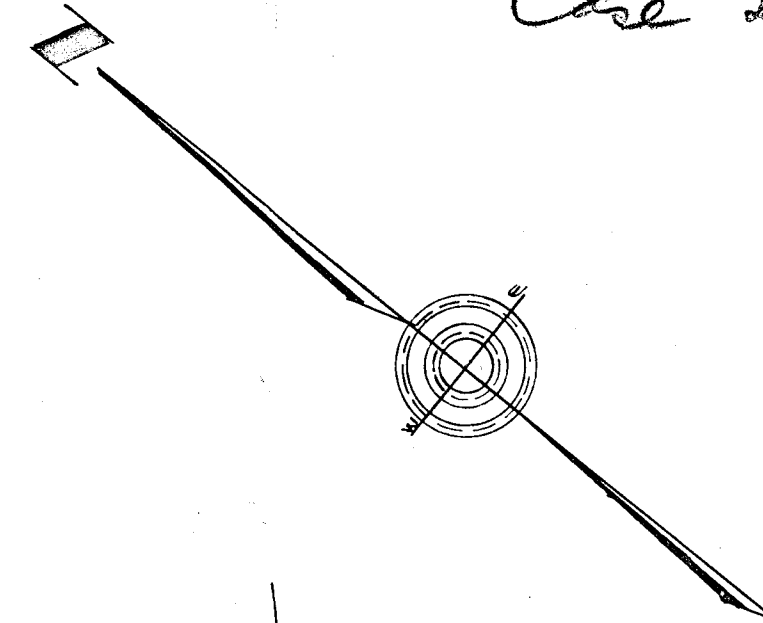
L. W. DECELLE SURVEYORS INC.
CIVIL ENGINEERS

285 UNION ST., RANDOLPH

Case 29225

"TRAVERSE"					
BEARING	LENGTH	EAST	WEST	NORTH	SOUTH
S39°48'30" E	66.00	42.26			50.70
N46°40'44" E	164.35	119.57		112.76	
N39°48'30" W	66.00		42.26	50.70	
S46°40'44" W	164.35		119.57		112.76
		161.83	161.83	163.96	163.96

Raymond J. Hall
Manuel Tegrin
Robert C. Lane
Michael J. Kourafas



UNION STREET
PUBLIC 50' WIDE COUNTY LAYOUT of JUNE 19, 1928 - SHEET 2 of 3
RT. #139