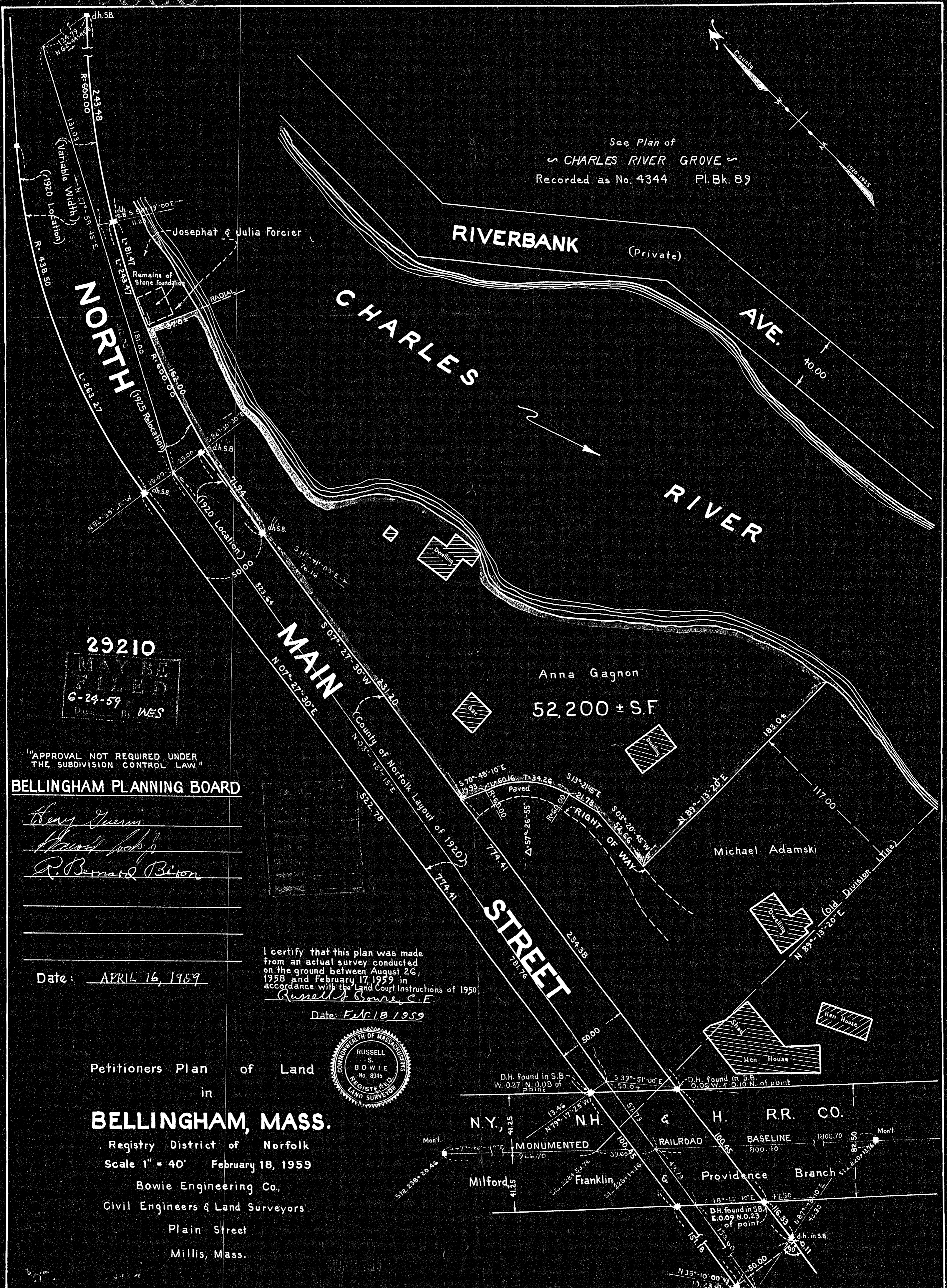


29210A



See Plan of  
 CHARLES RIVER GROVE  
 Recorded as No. 4344 Pl. Bk. 89

29210  
 MAY BE FILED  
 6-24-59  
 D. W. S.

"APPROVAL NOT REQUIRED UNDER THE SUBDIVISION CONTROL LAW"

BELLINGHAM PLANNING BOARD

*Henry Guerin*  
*Howard Cook*  
*R. Bernard Biton*

Date: APRIL 16, 1959

I certify that this plan was made from an actual survey conducted on the ground between August 26, 1958 and February 17, 1959 in accordance with the Land Court Instructions of 1950  
*Russell S. Bowie, C.E.*

Date: Feb. 18, 1959



Petitioners Plan of Land in BELLINGHAM, MASS.

Registry District of Norfolk  
 Scale 1" = 40' February 18, 1959  
 Bowie Engineering Co.,  
 Civil Engineers & Land Surveyors  
 Plain Street  
 Millis, Mass.

29210A