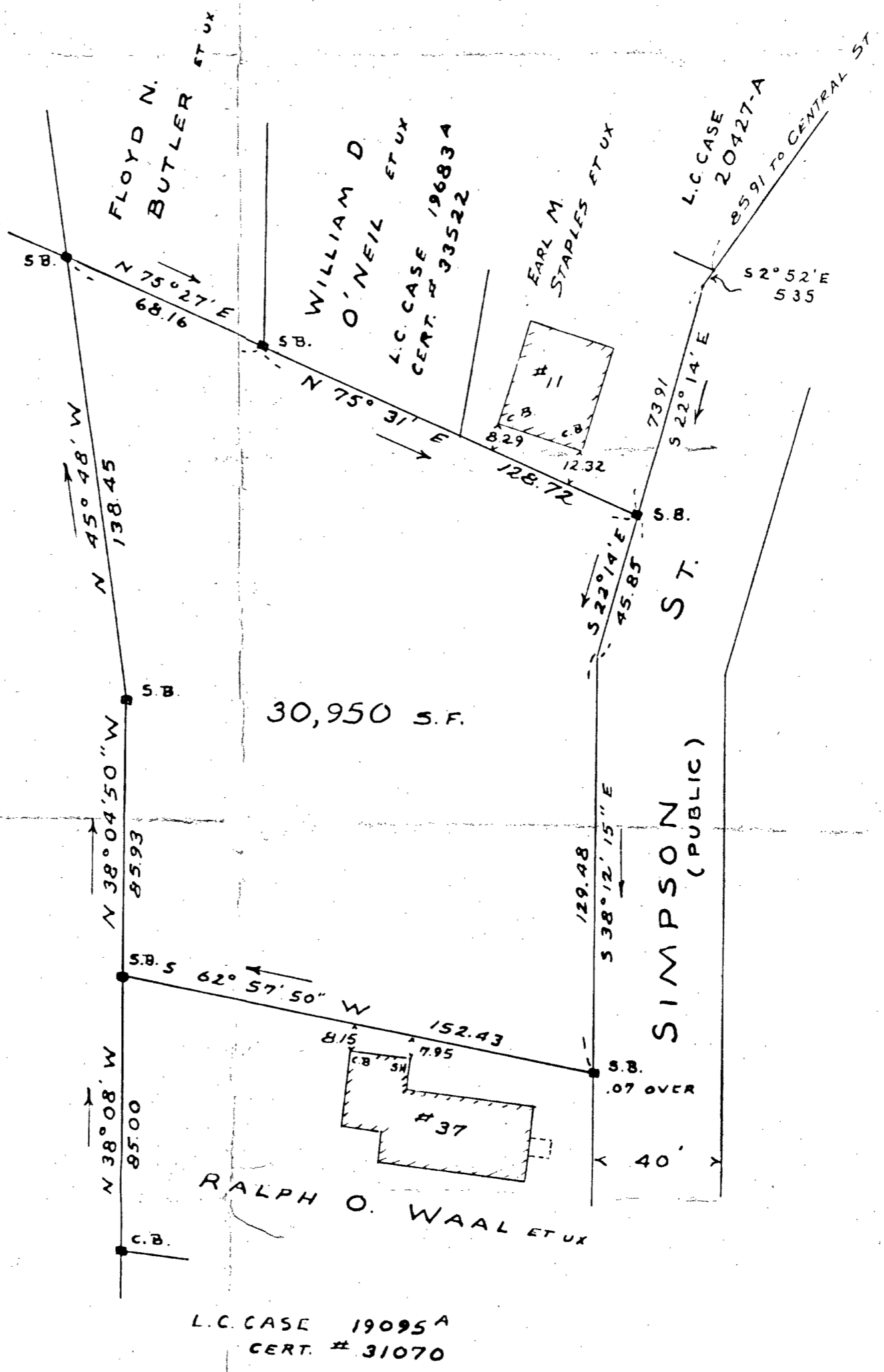


WALTER R. ROGERS



BEARING	DIST	N	S	E	W
N 38°04'50" W	85.93	67.64			53.00
N 45°48' W	138.45	96.52			99.66
N 75°27' E	68.16	17.12		65.97	
N 75°31' E	128.72	32.19		124.63	
S 22°14' E	45.85		42.45	17.34	
S 38°12'15" E	129.48		101.74	80.07	
S 62°57'50" W	152.43		69.29		135.77
		213.97	213.98	288.01	288.03

PLANNING BOARD APPROVAL UNDER
 SUBDIVISION CONTROL NOT REQUIRED
*Approval for Land Court
 recording only. May 4, 1959.
 Almon M. Frederick, Sec.*

BOARD OF HEALTH

I CERTIFY THAT THIS ACTUAL SURVEY
 WAS MADE ON THE GROUND IN ACCORDANCE
 WITH THE LAND COURT INSTRUCTIONS OF 1950
 ON FEB. 13, 1959
 MARCH 12, 1959

V.C. Boynton REG. ENGR.

LAND COURT
 PLAN OF LAND IN STOUGHTON
 BELONGING TO
VINCENZO RUGGIERO
 257 PEARL ST., STOUGHTON
 SCALE 1" = 40' MAR. 12, 1959
 HAYWARD-HAYWARD & BOYNTON SURV.
 68 MAIN ST. BROCKTON