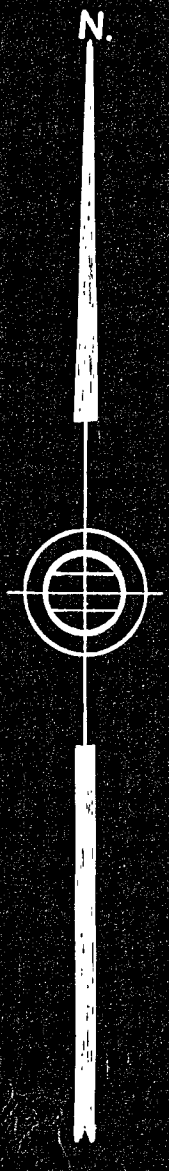


Approval under the Subdivision Control Law
not required

MILLIS PLANNING BOARD

Handwritten signatures and dates

Date: 8-13-58



MIDDLESEX

(County Layout of 1926)

STREET

11.155 Acres



TRAVERSE BALANCE		E.C.-0.13		P=1 in 22,450	
BEARING	DIST.	N	S	E	W
S 27° 26' 38" E	1104.28		980.01	508.93	
N 37° 26' 45" E	392.60	311.70		238.71	
N 07° 29' 55" W	259.46	257.24			33.66
N 03° 04' 10" W	285.75	285.34			15.30
N 55° 23' 12" W	574.12	326.12			472.50
S 48° 26' 05" W	302.03		200.39		225.98
	2918.35	1180.40	1180.40	747.64	747.64

PROPERTY LINE BALANCE					
BEARING	DIST.	N	S	E	W
N 03° 04' 10" W	313.53	313.08			16.79
N 55° 23' 12" W	600.00	340.82			493.80
S 46° 33' 10" W	283.41		194.90		205.76
S 16° 53' 17" E	65.13		62.32	18.92	
S 25° 12' 14" E	96.59		87.39	41.13	
S 28° 56' 54" E	106.69		93.36	51.64	
S 27° 00' 31" E	161.78		144.14	73.47	
S 20° 17' 30" E	234.26		219.72	81.24	
S 21° 33' 01" E	156.81		145.85	57.60	
S 36° 25' 52" E	146.50		117.87	87.00	
S 35° 04' 56" E	151.23		123.75	86.92	
N 37° 26' 45" E	402.92	319.89		244.98	
N 07° 01' 25" W	217.13	215.50			26.55
	1189.29	1189.30	742.90	742.90	

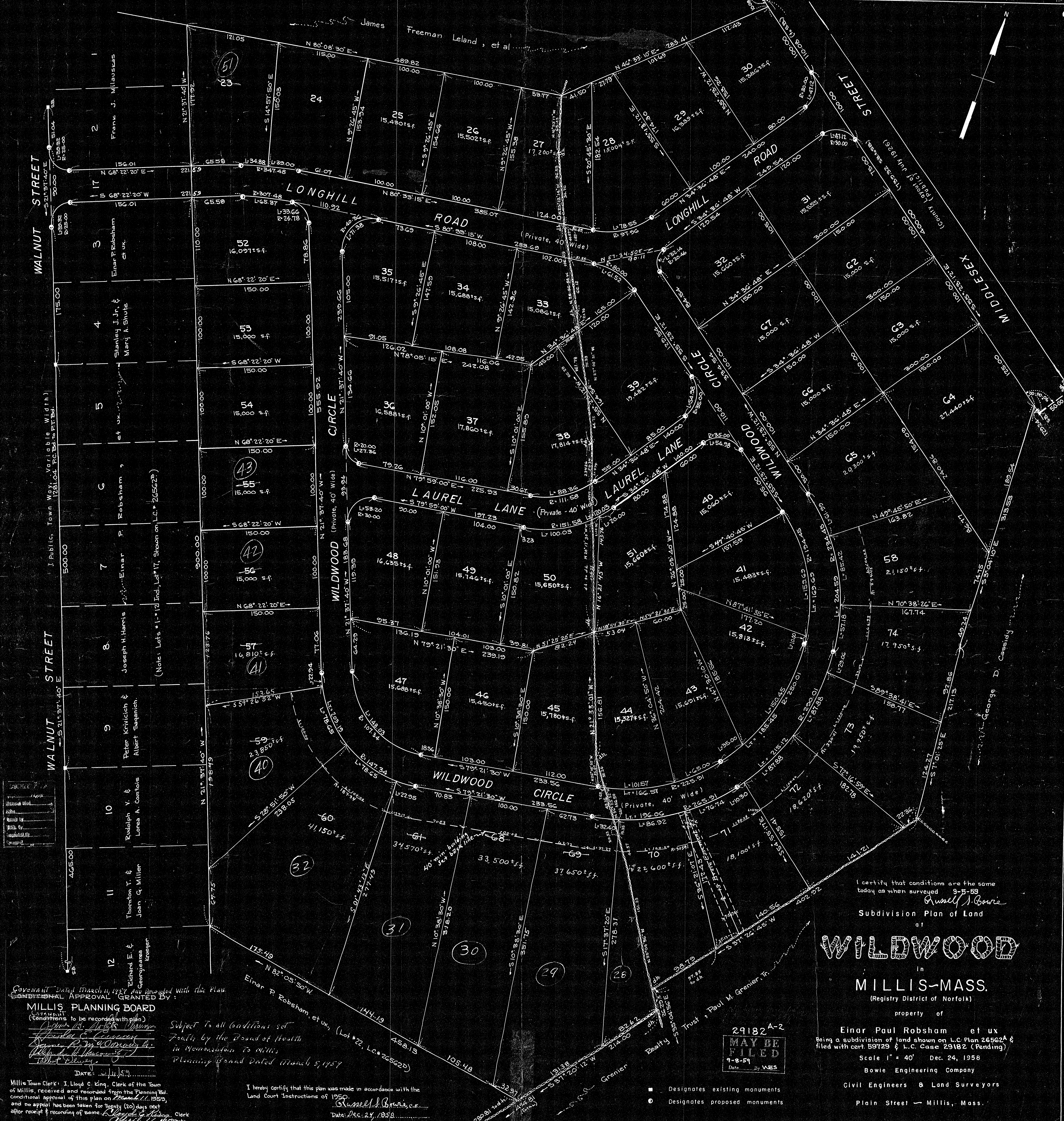
#29182

 up to date
 Norfolk Co. Pl. 38

Grenier Realty Trust
 L.C. Case No. 25813 pending

Petitioners Plan of Land
 in
MILLIS, MASS.
 Registry District of Norfolk
 property of
Einar Paul Robsham et ux
 Scale 1" = 40' August 8, 1958
 Bowie Engineering Co., Civil Engineers
 Post Office Building, Millis, Mass.

I certify that this actual survey was made on the ground in accordance
 with Land Court Instructions of 1950 between July 31, 1958 and August 2, 1958
 Date: August 13, 1958
 Russell J. Bowie, C.E.
 Engineer



Symbol	Description
■	Designates existing monuments
○	Designates proposed monuments

I certify that conditions are the same today as when surveyed 9-5-59
Russell J. Bowie
 Subdivision Plan of Land

WILDWOOD

in
MILLIS-MASS.
 (Registry District of Norfolk)

property of
Einar Paul Robsham et ux
 Being a subdivision of land shown on L.C. Plan 26562A & filed with cert. 59729 & L.C. Case 29182 (Pending)
 Scale 1" = 40' Dec. 24, 1958
Bowie Engineering Company
 Civil Engineers & Land Surveyors
 Plain Street - Millis, Mass.

29182 A-2
MAY BE FILED
 9-8-59
 By *VES*

Covenant Dated March 14, 1957 and Recorded with this Plan
 CONDITIONAL APPROVAL GRANTED BY:

MILLIS PLANNING BOARD
 (Conditions to be recorded with plan)
[Signatures]

Subject to all conditions set forth by the Board of Health in Memorandum to Millis Planning Board Dated March 5, 1957
 (Lot #22, L.C. # 26562B)

I hereby certify that this plan was made in accordance with the Land Court Instructions of 1950.
Russell J. Bowie
 Date: Dec. 24, 1958

Millis Town Clerk: I, Lloyd C. King, Clerk of the Town of Millis, received and recorded from the Planning Board conditional approval of this plan on December 24, 1958, and no appeal has been taken for twenty (20) days next after receipt & recording of same.
[Signature]
 Date: 12/24/58